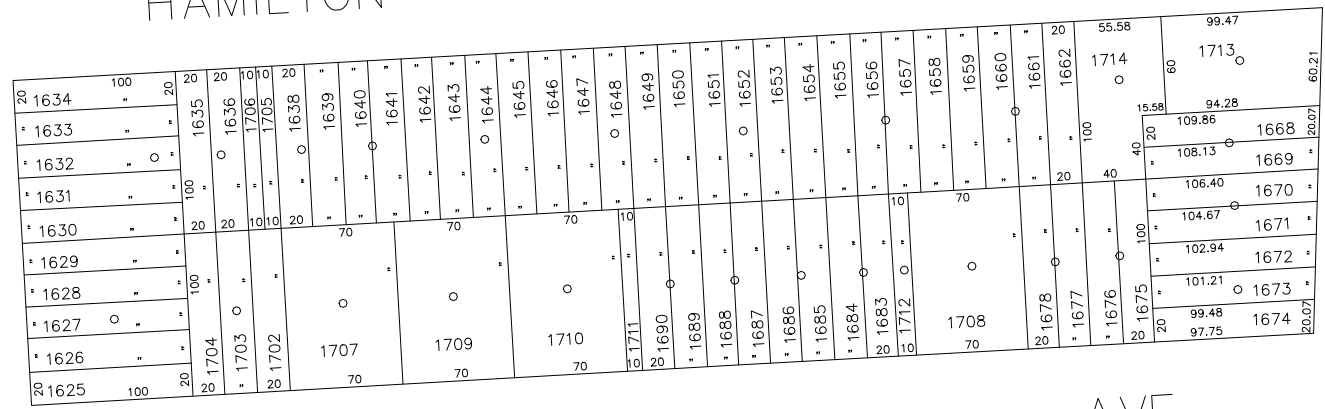


N 170,250

CENTRAL AVE.

HAMILTON

AVE.



TORONTO

AVE.

FRANKLIN AVE.

N 169,750

E 2,146,000

E 2,146,850



COPYRIGHT 1988 NASSAU COUNTY

**LEGEND**

COUNTY LINE	---
TOWN LINE	---
VILLAGE LINE	---
SCHOOL DISTRICT LINE	---
PROPERTY LINE	---
SPECIAL DISTRICT LINE	---
BLOCK LIMIT	---
LOCATOR POINT	*
TAX MAP PARCEL NO.	246
CALCULATED ACREAGE	754(C)
DEED ACREAGE	178
SCALED DIMENSION	327(S)
DEED DIMENSION	185.89
REFERENCE MAPS	
MAP NO.	

<b>POLICE</b>	DIST
County Police	3
<b>WATER</b>	
Masapequon	13
<b>LIGHTING</b>	
Town of Oyster Bay	23
<b>LIBRARY</b>	
Masapequon	36

<b>FIRE PROTECTION</b>	DIST
<b>SANITARY</b>	
<b>REFUSE &amp; GARBAGE</b>	
<b>REFUSE DISPOSAL</b>	
<b>SEWAGE COLLECTION</b>	
Sewage Collection District #3-S	29
Town of Oyster Bay	65

**SPECIAL DISTRICTS**

<b>PUBLIC PARKING</b>	DIST
Town of Oyster Bay - Unincorporated Area	A
<b>SEWER</b>	
Nassau County Sewage Disposal District #3	39
<b>PARK</b>	
Masapequon	69
<b>IMPROVEMENT</b>	
<b>SIDEWALK</b>	

<b>DRAINAGE</b>	DIST
Unincorporated Area of District #1	D
<b>FIRE HYDRANT RENTAL</b>	
<b>GARBAGE</b>	
Garbage District #1	93
<b>ESCALATOR</b>	
<b>WATER POLLUTION CONTROL</b>	
Town, County, College, Police HQ	1
Town Highway	2

<b>MUNICIPALITIES</b>	
TOWN OF:	
HEMPSTEAD	
NORTH HEMPSTEAD	
OYSTER BAY	
CITY OF:	
GLEN COVE	
LONG BEACH	
VILLAGE OF:	
<b>SCHOOL DISTRICT</b>	
Plainville	18



**Nassau County**  
**Department of Assessment**  
 Charles O'Shea, Chairman  
**Land & Tax Map**

Map Last Revised: December 9 2002

**SEC. 52**  
**BLK. 188**

**SHEET 1 OF 1**

CODE	SPECIAL	DISTRICT	WITHIN	CODE	SPECIAL	DISTRICT	WITHIN	CODE	SPECIAL	DISTRICT	WITHIN	
894	1	13	2	23	29	3	36	39	65	93	A	D