

50' 25' 0' 50' 100'



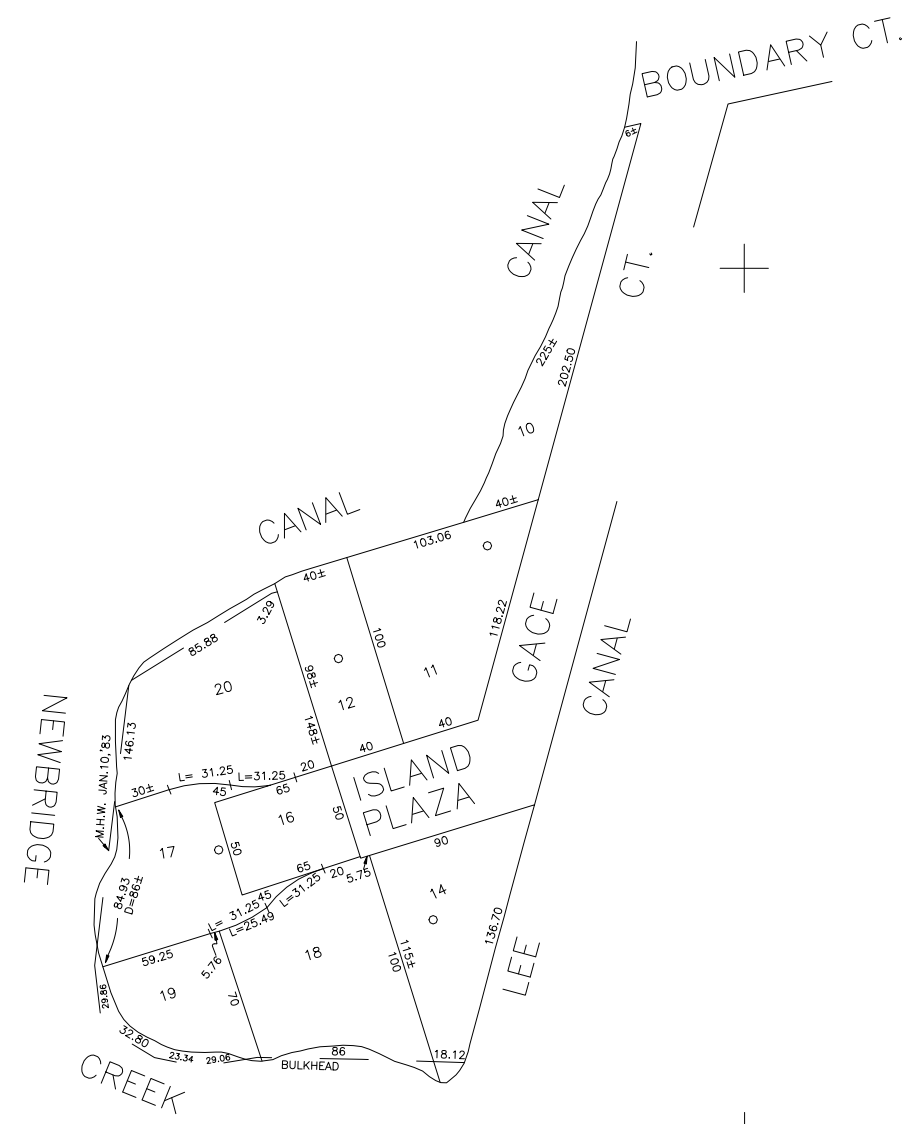
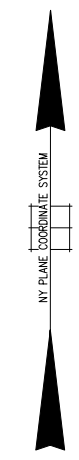
SCALE: 1" = 50'

N 157,250

N 156,800

E 2,130,700

E 2,131,150



FMLY BLK 256

COPYRIGHT 1998 NASSAU COUNTY

LEGEND	
COUNTY LINE	---
TOWN LINE	---
VILLAGE LINE	---
SCHOOL DISTRICT LINE	---
PROPERTY LINE	---
SPECIAL DISTRICT LINE	---
BLOCK LIMIT	---
LOCATOR POINT	*
TAX MAP PARCEL NO.	246
CALCULATED ACREAGE	734(C)
DEED ACREAGE	174
SCALED DIMENSION	327(S)
DEED DIMENSION	185.69
REFERENCE MAPS	
MAP NO.	

POLICE		DIST
County Police		3
WATER		
LIGHTING		
Town of Hempstead		47
LIBRARY		
Bellmore		60

FIRE PROTECTION		DIST
SANITARY		
REFUSE & GARBAGE		
Town of Hempstead		L
REFUSE DISPOSAL		
Town of Hempstead		X
SEWAGE COLLECTION		
Sewage Collection District #3-MH		28

SPECIAL DISTRICTS		
PUBLIC PARKING		
SEWER		
Nassau County Sewage Disposal District #3		39
PARK		
Town of Hempstead		V
IMPROVEMENT		
SIDEWALK		

DRAINAGE		DIST
FIRE HYDRANT RENTAL		
GARBAGE		
ESCALATOR		
WATER POLLUTION CONTROL		
Town, County, College, Police HQ		1
Town Building Dept, Zoning & Appeals, Unincorporated Area		2

MUNICIPALITIES	
TOWN OF:	
HEMPSTEAD	
NORTH HEMPSTEAD	
OYSTER BAY	
CITY OF:	
GLEN COVE	
LONG BEACH	
VILLAGE OF:	
SCHOOL DISTRICT	
Bellmore	7



Nassau County
Department of Assessment
Charles O'Shea, Chairman
Land & Tax Map

Map Last Revised: October 7 2003

SEC. 63
BLK. 255

SHEET 1 OF 1

CODE	SPECIAL	DISTRICT	WITHIN	CODE	SPECIAL	DISTRICT	WITHIN	CODE	SPECIAL	DISTRICT	WITHIN
127	1	2	28	3	39	47	60	L	V	X	