

50' 25' 0' 50' 100'

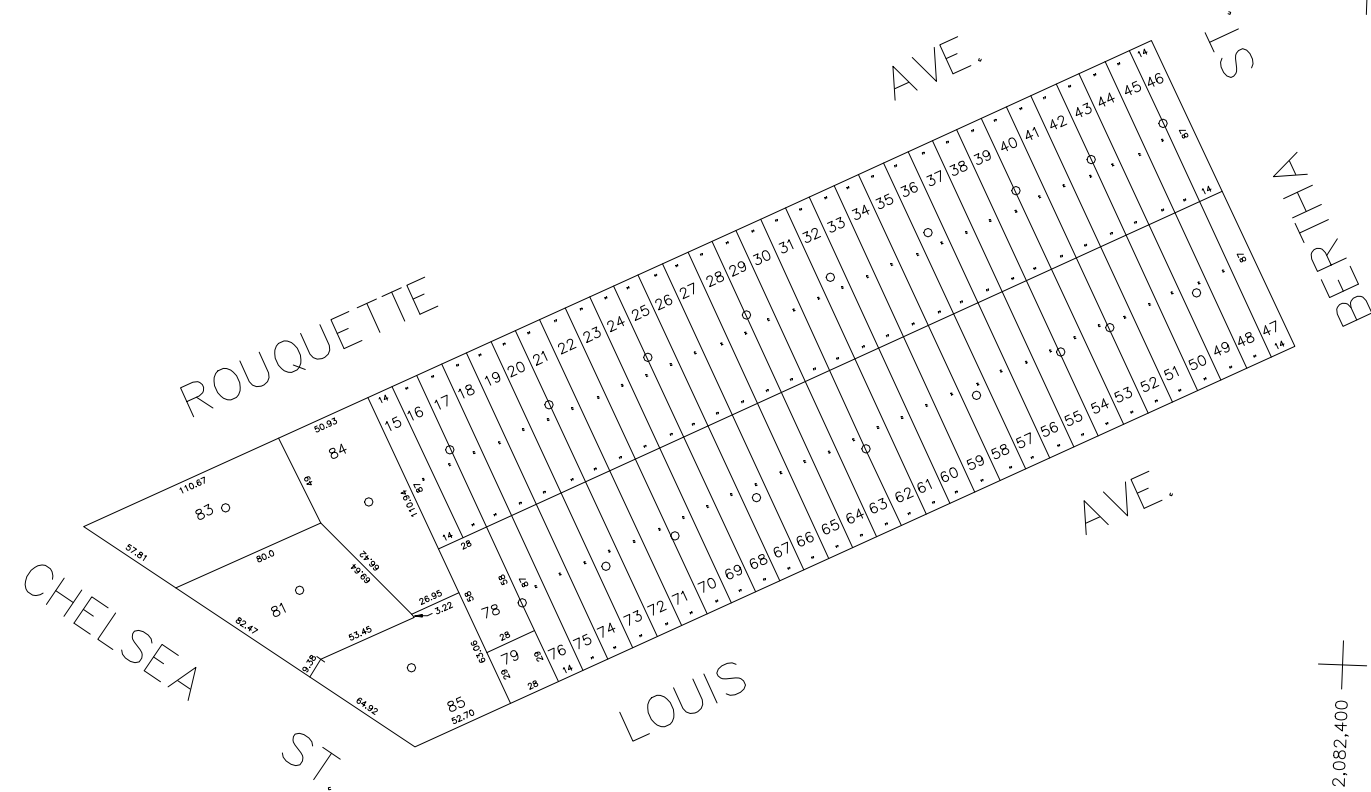


SCALE: 1" = 50'

N 177,850

N 177,500
E 2,081,650

E 2,082,400



COPYRIGHT 1988 NASSAU COUNTY

LEGEND	
COUNTY LINE	---
TOWN LINE	- - - -
VILLAGE LINE	— · — · —
SCHOOL DISTRICT LINE	— · — · —
PROPERTY LINE	— · — · —
SPECIAL DISTRICT LINE	— · — · —
BLOCK LIMIT	— · — · —
LOCATOR POINT	•
TAX MAP PARCEL NO.	246
CALCULATED ACREAGE	754(C)
DEED ACREAGE	174
SCALED DIMENSION	327(S)
DEED DIMENSION	185.69
REFERENCE MAPS	
MAP NO.	

POLICE	
County Police	3
WATER	
LIGHTING	
LIBRARY	
FIRE	

FIRE PROTECTION	
SANITARY	
Sanitary District #	93
REFUSE & GARBAGE	
REFUSE DISPOSAL	
SEWAGE COLLECTION	
Sewage Collection District #2-FP	D

SPECIAL DISTRICTS	
PUBLIC PARKING	
SEWER	
Nassau County Sewage Disposal District #2	202
PARK	
IMPROVEMENT	
SIDEWALK	

DRAINAGE	
FIRE HYDRANT RENTAL	
GARBAGE	
ESCALATOR	
WATER POLLUTION CONTROL	
Town, County, College, Police HQ	1

MUNICIPALITIES	
TOWN OF: HEMPSTEAD	
NORTH HEMPSTEAD	
OYSTER BAY	
CITY OF: GLEN COVE	
LONG BEACH	
VILLAGE OF: Incorporated Village of South Floral Park	
SCHOOL DISTRICT	
Elmont	18



Nassau County
Department of Assessment
Charles O'Shea, Chairman
Land & Tax Map
 Map Last Revised: September 25 2003

SEC. 32
BLK. 351
SHEET 1 OF 1

CODE	SPECIAL	DISTRICT	WITHIN	CODE	SPECIAL	DISTRICT	WITHIN	CODE	SPECIAL	DISTRICT	WITHIN
099	1	202	3	93	D						