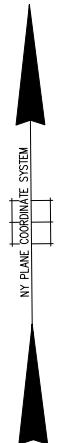
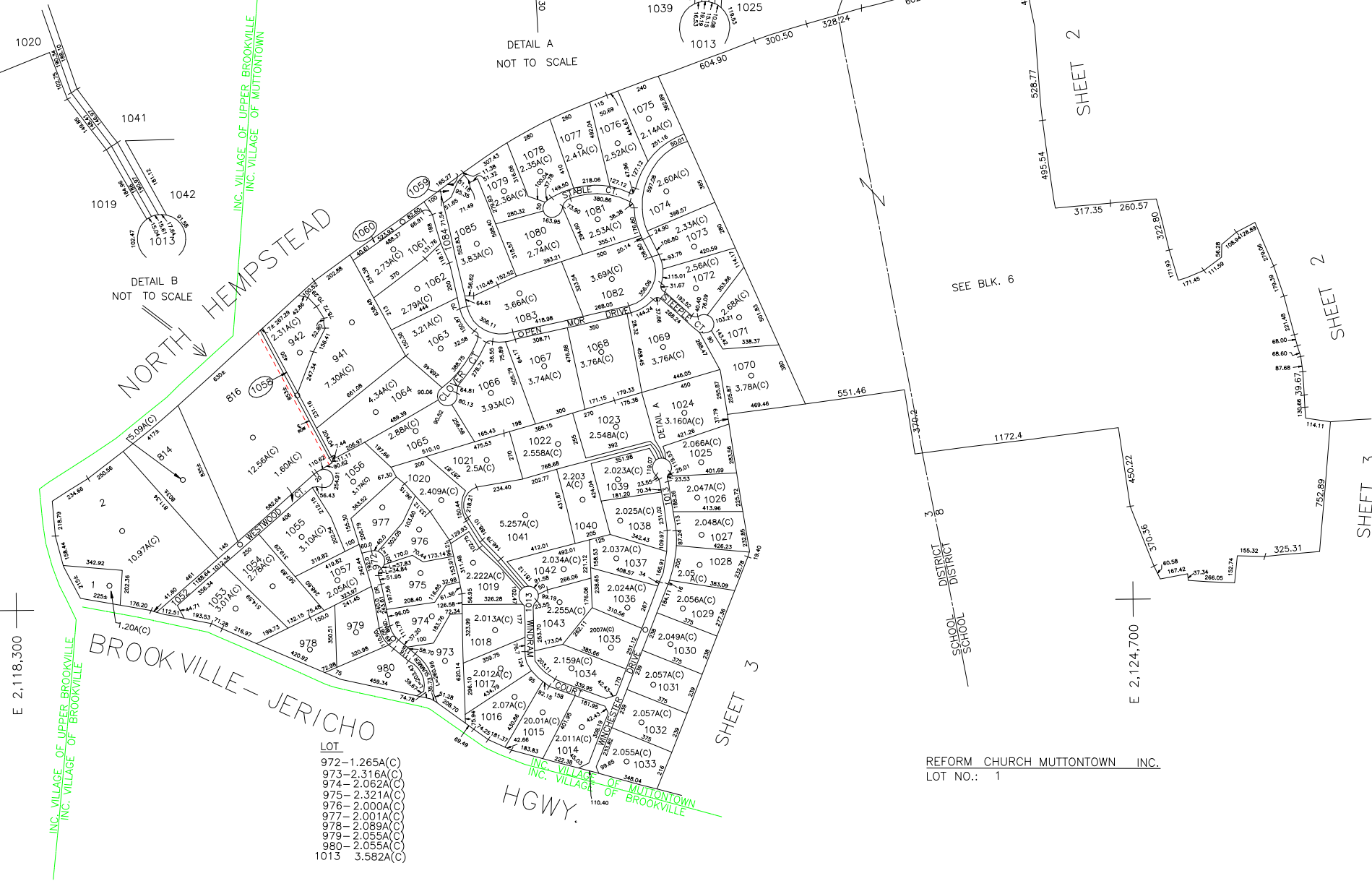


N 223,400



N 219,800



- LOT
- 972-1.265A(C)
 - 973-2.316A(C)
 - 974-2.062A(C)
 - 975-2.321A(C)
 - 976-2.000A(C)
 - 977-2.001A(C)
 - 978-2.089A(C)
 - 979-2.055A(C)
 - 980-2.055A(C)
 - 1013 3.582A(C)

LEGEND

COUNTY LINE	---
TOWN LINE	---
VILLAGE LINE	---
SCHOOL DISTRICT LINE	---
PROPERTY LINE	---
SPECIAL DISTRICT LINE	---
BLOCK LIMIT	---
LOCATOR POINT	●
TAX MAP PARCEL NO.	246
CALCULATED ACREAGE	75A(C)
DEED ACREAGE	176A
SCALED DIMENSION	327(S)
DEED DIMENSION	185.69

REFERENCE MAPS
MAP NO.

SPECIAL DISTRICT	WITHIN
POLICE	
WATER	
LIBRARY	
FIRE	

SPECIAL DISTRICTS

SPECIAL DISTRICT	WITHIN
FIRE PROTECTION	
SANITARY	
REFUSE & GARBAGE	
REFUSE DISPOSAL	
SEWAGE COLLECTION	

SPECIAL DISTRICTS

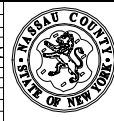
SPECIAL DISTRICT	WITHIN
PUBLIC PARKING	
SEWER	
PARK	
IMPROVEMENT	
SIDEWALK	

SPECIAL DISTRICTS

SPECIAL DISTRICT	WITHIN
DRAINAGE	
FIRE HYDRANT RENTAL	
GARBAGE	
ESCALATOR	
WATER POLLUTION CONTROL	

MUNICIPALITIES

MUNICIPALITY	WITHIN
TOWN OF: HEMPSTEAD	
NORTH HEMPSTEAD	
OYSTER BAY	
CITY OF: GLEN COVE	
LONG BEACH	
VILLAGE OF: INCORPORATED Village of Muttontown	
SCHOOL DISTRICT	
Brookville	3
East Norwich	8



Nassau County
Department of Assessment
Charles O'Shea, Chairman
Land & Tax Map
Map Last Revised: October 13 2003

SEC. 16
BLK. A
SHEET 1 OF 6

CODE	SPECIAL DISTRICT	DISTRICT	WITHIN
811	1	10	