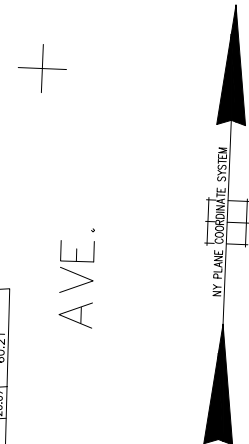


N 170,250

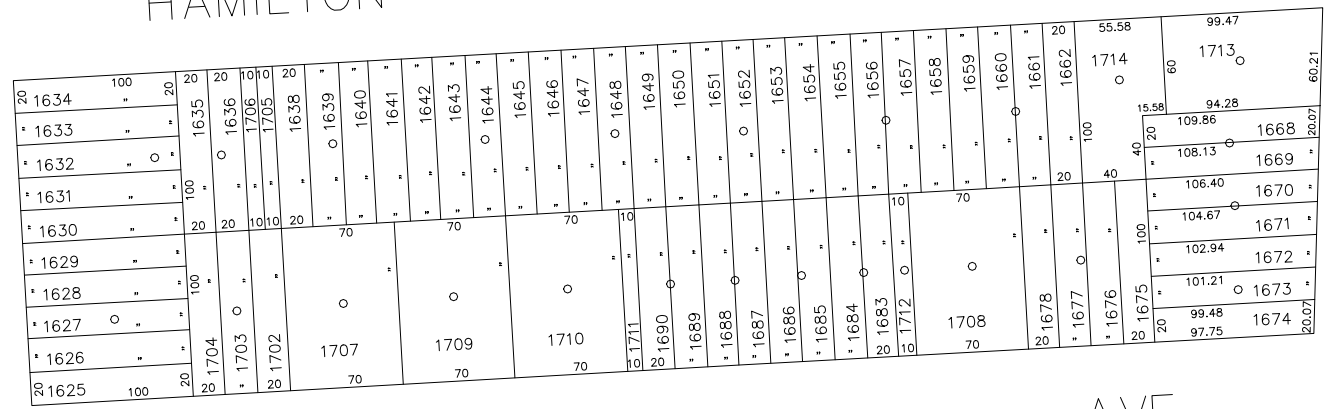
CENTRAL AVE.

HAMILTON AVE.

AVE.



FRANKLIN AVE.



N 169,750

E 2,146,000

TORONTO AVE.

E 2,146,850

LEGEND

COUNTY LINE	---
TOWN LINE	----
VILLAGE LINE	-----
SCHOOL DISTRICT LINE	-----
PROPERTY LINE	-----
SPECIAL DISTRICT LINE	-----
BLOCK LIMIT	-----
LOCATOR POINT	*
TAX MAP PARCEL NO.	246
CALCULATED ACREAGE	754(C)
DEED ACREAGE	174
SCALED DIMENSION	327(S)
DEED DIMENSION	185.69
REFERENCE MAPS	
MAP NO.	

POLICE	DIST
County Police	3
WATER	
Masapequ	13
LIGHTING	
Town of Oyster Bay	23
LIBRARY	
Masapequ	36

FIRE PROTECTION	DIST
SANITARY	
REFUSE & GARBAGE	
REFUSE DISPOSAL	
SEWAGE COLLECTION	
Sewage Collection District #3-S	29
Town of Oyster Bay	65

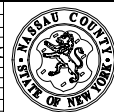
SPECIAL DISTRICTS

PUBLIC PARKING	DIST
Town of Oyster Bay - Unincorporated Area	A
SEWER	
Nassau County Sewage Disposal District #3	39
PARK	
Masapequ	69
IMPROVEMENT	
SIDEWALK	

DRAINAGE	DIST
Unincorporated Area of District #1	D
FIRE HYDRANT RENTAL	
GARBAGE	
Garbage District #1	93
ESCALATOR	
WATER POLLUTION CONTROL	
Town, County, College, Police HQ	1
Town Highway	2

MUNICIPALITIES

TOWN OF:	
HEMPSTEAD	
NORTH HEMPSTEAD	
OYSTER BAY	
CITY OF:	
GLEN COVE	
LONG BEACH	
VILLAGE OF:	
SCHOOL DISTRICT	
Plainville	18



Nassau County
Department of Assessment
Charles O'Shea, Chairman
Land & Tax Map

Map Last Revised: October 9 2003

SEC. 52
BLK. 188

SHEET 1 OF 1

CODE	SPECIAL	DISTRICT	WITHIN	CODE	SPECIAL	DISTRICT	WITHIN	CODE	SPECIAL	DISTRICT	WITHIN
584	1	13	2	29	29	3	36	39	65	69	93