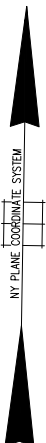
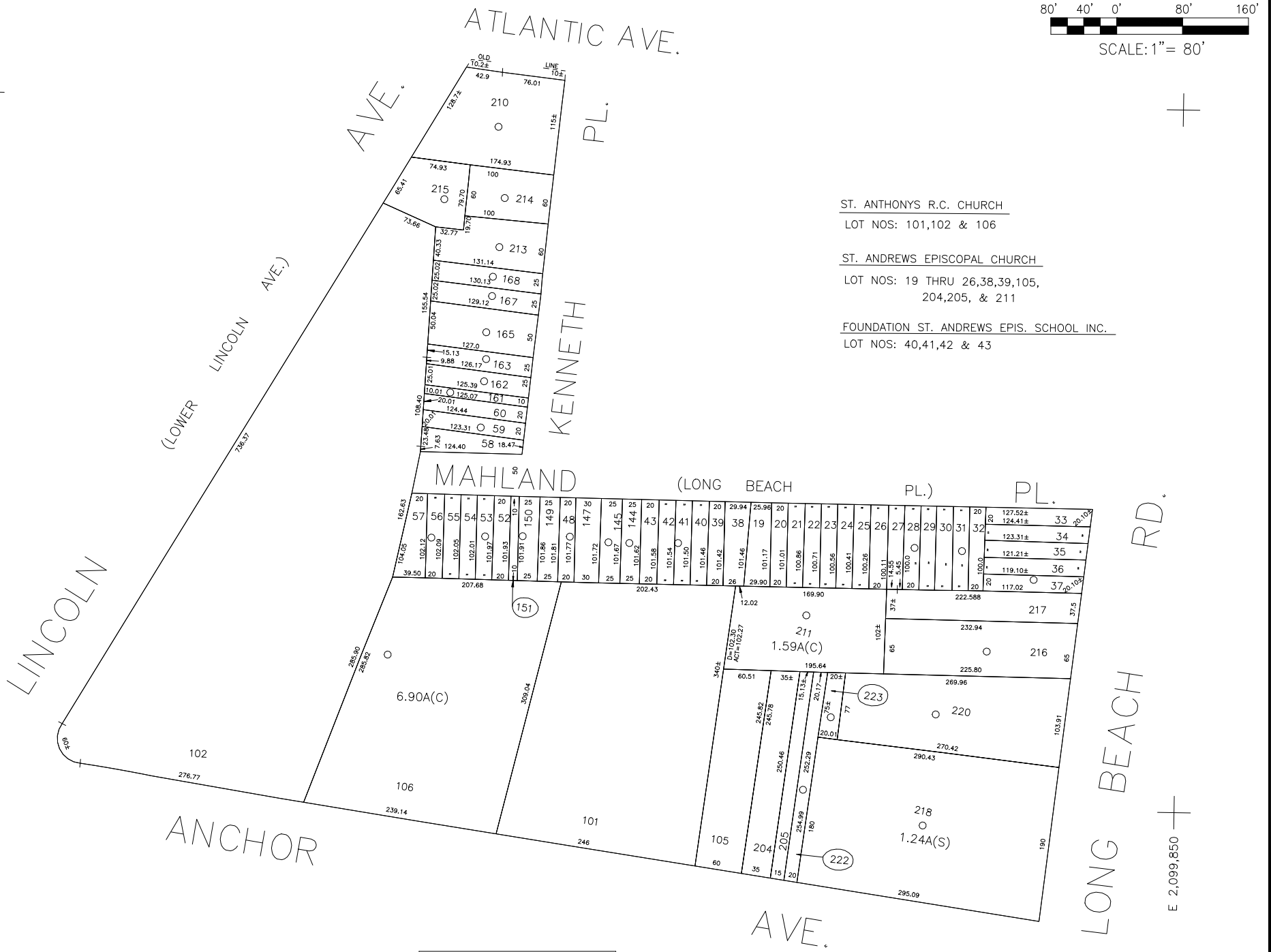


N 150,850



N 150,000  
E 2,098,400



ST. ANTHONYS R.C. CHURCH  
LOT NOS: 101,102 & 106

ST. ANDREWS EPISCOPAL CHURCH  
LOT NOS: 19 THRU 26,38,39,105,  
204,205, & 211

FOUNDATION ST. ANDREWS EPIS. SCHOOL INC.  
LOT NOS: 40,41,42 & 43

**LEGEND**

|                       |        |
|-----------------------|--------|
| COUNTY LINE           | ---    |
| TOWN LINE             | ---    |
| VILLAGE LINE          | ---    |
| SCHOOL DISTRICT LINE  | ---    |
| PROPERTY LINE         | ---    |
| SPECIAL DISTRICT LINE | ---    |
| BLOCK LIMIT           | ---    |
| LOCATOR POINT         | *      |
| TAX MAP PARCEL NO.    | 246    |
| CALCULATED ACREAGE    | 734(C) |
| DEED ACREAGE          | 174    |
| SCALED DIMENSION      | 327(S) |
| DEED DIMENSION        | 185.89 |
| REFERENCE MAPS        |        |
| MAP NO.               |        |

| POLICE            |  |
|-------------------|--|
| County Police     |  |
| Water             |  |
| LIGHTING          |  |
| Town of Hempstead |  |
| LIBRARY           |  |
| Oceanside         |  |
| FIRE              |  |
| Oceanside         |  |
| DIST              |  |
| 3                 |  |
| 47                |  |
| 73                |  |
| 94                |  |

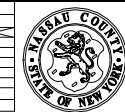
**SPECIAL DISTRICTS**

| FIRE PROTECTION                           |     |
|---|-----|
| SANITARY                                  |     |
| Sanitary District 7                       | 94  |
| REFUSE & GARBAGE                          |     |
| REFUSE DISPOSAL                           |     |
| Town of Hempstead                         | X   |
| SEWAGE COLLECTION                         |     |
| Sewage Collection District #2-IPQ         | K   |
| PUBLIC PARKING                            |     |
| Oceanside                                 | Y   |
| SEWER                                     |     |
| Nassau County Sewage Disposal District #2 | 202 |
| PARK                                      |     |
| Town of Hempstead                         | V   |
| IMPROVEMENT                               |     |
| SIDEWALK                                  |     |

| DRAINAGE  |   |
|---|---|
| FIRE HYDRANT RENTAL                                       |   |
| GARBAGE   |   |
| ESCALATOR   |   |
| WATER POLLUTION CONTROL                                   |   |
| Town, County, College, Police HQ                          | 1 |
| Town Building Dept. Zoning & Appeals, Unincorporated Area | 2 |

**MUNICIPALITIES**

| TOWN OF: HEMPSTEAD     |    |
|------------------------|----|
| NORTH HEMPSTEAD        |    |
| OYSTER BAY             |    |
| CITY OF: GLEN COVE     |    |
| LONG BEACH VILLAGE OF: |    |
| SCHOOL DISTRICT        |    |
| Oceanside              | 11 |



**Nassau County**  
**Department of Assessment**  
Charles O'Shea, Chairman  
**Land & Tax Map**

Map Last Revised: October 28 2003

**SEC. 43**  
**BLK. 376**

**SHEET 1 OF 1**

| CODE | SPECIAL | DISTRICT | WITHIN | CODE | SPECIAL | DISTRICT | WITHIN | CODE | SPECIAL | DISTRICT | WITHIN |
|------|---------|----------|--------|------|---------|----------|--------|------|---------|----------|--------|
| 129  | 1       | 2        | 202    | 3    | 47      | 73       | 94     | K    | V       | X        | Y      |