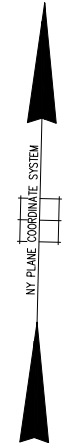
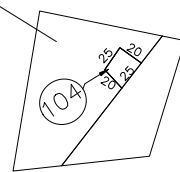
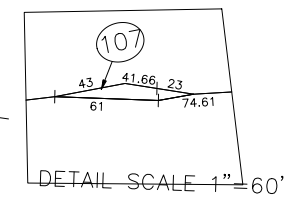
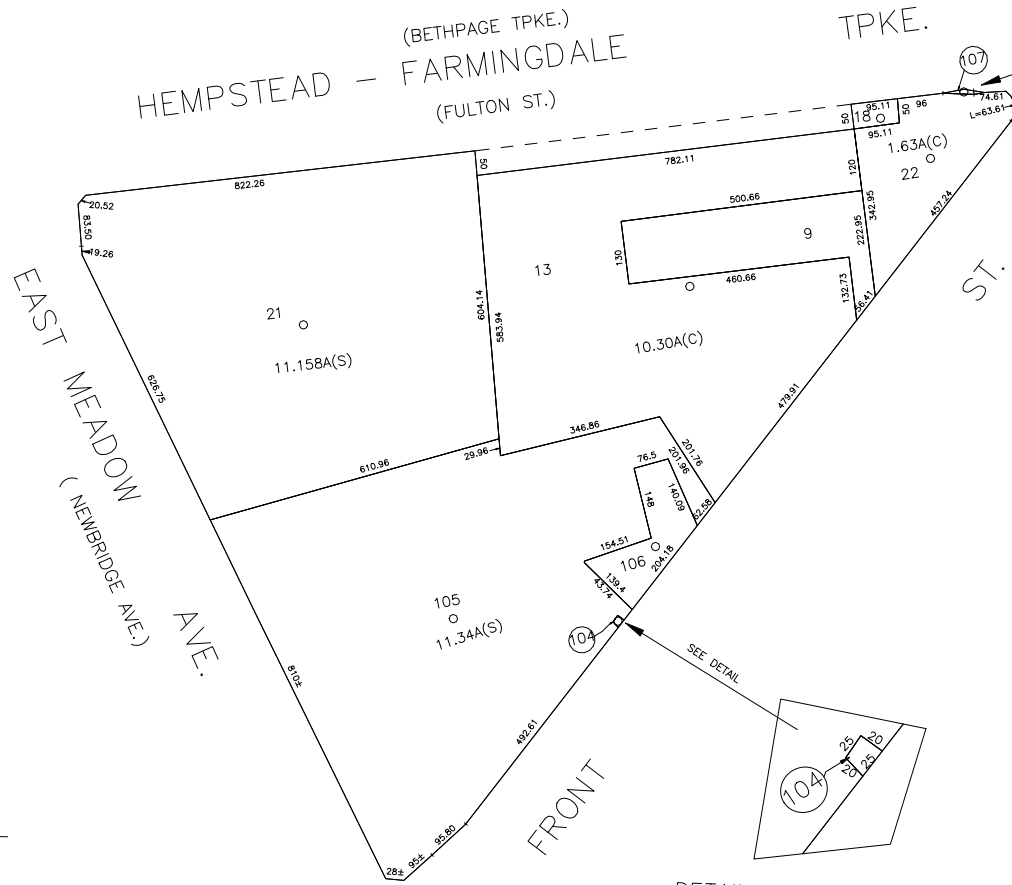


N 182,300

N 180,500

E 2,119,900

E 2,122,100



COPYRIGHT 1998 NASSAU COUNTY

LEGEND	
COUNTY LINE	---
TOWN LINE	----
VILLAGE LINE	-----
SCHOOL DISTRICT LINE	-----
PROPERTY LINE	-----
SPECIAL DISTRICT LINE	-----
BLOCK LIMIT	-----
LOCATOR POINT	*
TAX MAP PARCEL NO.	246
CALCULATED ACREAGE	734(C)
DEED ACREAGE	174
SCALED DIMENSION	327(S)
DEED DIMENSION	185.69
REFERENCE MAPS	
MAP NO.	

POLICE	
County Police	3
East Meadow	9
Lighting	47
Library	62

FIRE PROTECTION	
Sanitary	
Refuse & Garbage	L
Refuse Disposal	X
Sewage Collection	24

SPECIAL DISTRICTS	
Public Parking	68
Sewer	30
Park	V
Improvement	
Sidewalk	

DRAINAGE	
Fire Hydrant Rental	
Garbage	
Escalator	
Water Pollution Control	
Town, County, College, Police HQ	1
Town Building Dept. Zoning & Appeals, Unincorporated Area	2

MUNICIPALITIES	
Town of Hempstead	
North Hempstead	
Oyster Bay	
City of Glen Cove	
Long Beach	
Village of East Meadow	3
School District	
East Meadow	3



Nassau County
Department of Assessment
Charles O'Shea, Chairman
Land & Tax Map

Map Last Revised: October 30 2003

SEC. 50
BLK. C

SHEET 1 OF 1

CODE	SPECIAL	DISTRICT	WITHIN	CODE	SPECIAL	DISTRICT	WITHIN	CODE	SPECIAL	DISTRICT	WITHIN	
041	1	2	24	3	30	47	62	68	9	L	V	X