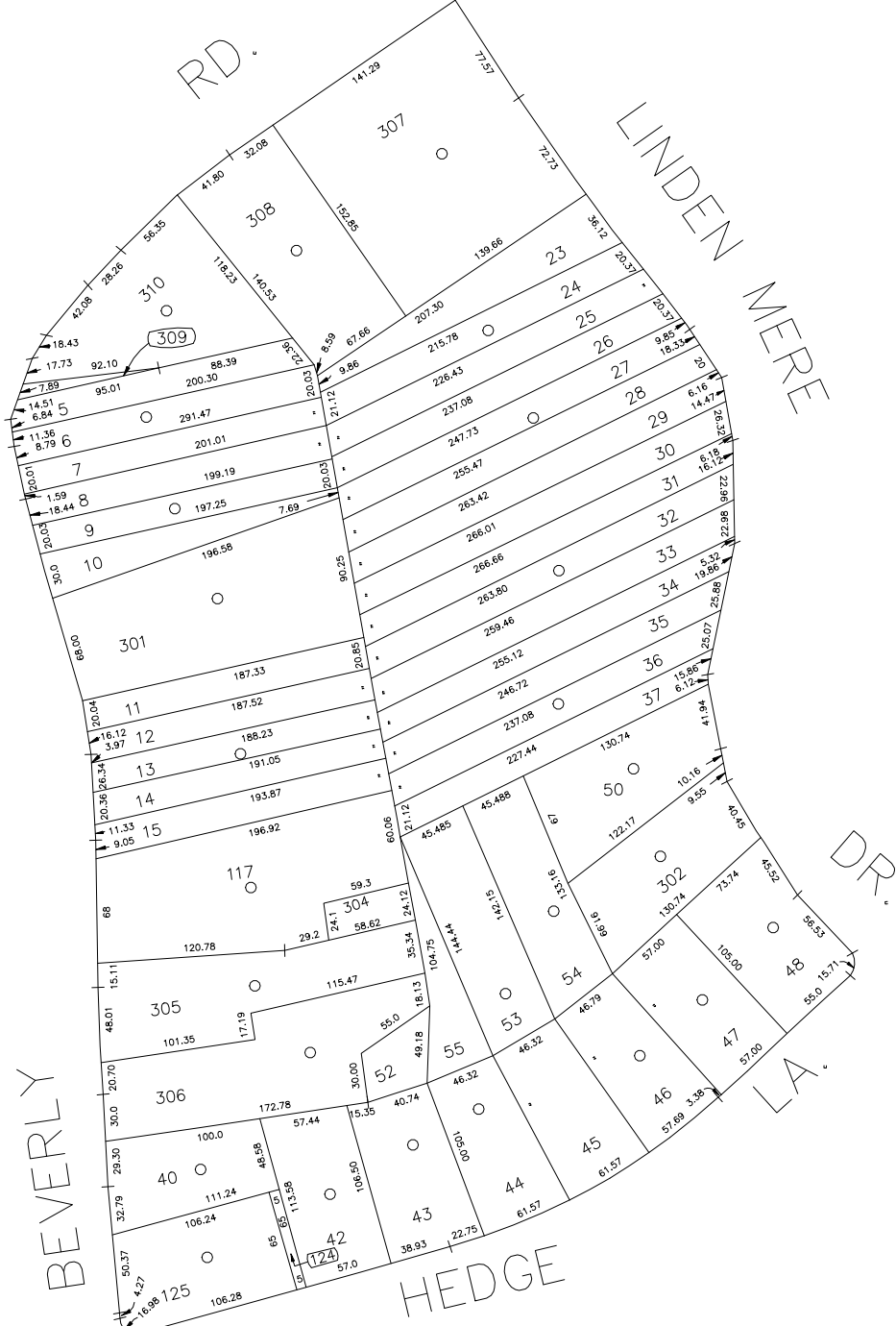


60' 30' 0' 60' 120'

SCALE: 1" = 60'

N 157,450



E 2,123,500

N 156,500

E 2,124,350

LEGEND

COUNTY LINE	---
TOWN LINE	- - - -
VILLAGE LINE	· · · ·
SCHOOL DISTRICT LINE	—+—+—+—+—
PROPERTY LINE	— · — · — · — · —
SPECIAL DISTRICT LINE	—+—+—+—+—
BLOCK LIMIT	—+—+—+—+—
LOCATOR POINT	*
TAX MAP PARCEL NO.	246
CALCULATED ACREAGE	734(C)
DEED ACREAGE	174
SCALED DIMENSION	327(S)
DEED DIMENSION	185.69

REFERENCE MAPS
MAP NO.

POLICE	
County Police	3
WATER	
LIGHTING	
Town of Hempstead	47
LIBRARY	
FIRE	

FIRE PROTECTION	
Merrick	87
SANITARY	
REFUSE & GARBAGE	
Merrick - North Merrick	4D
REFUSE DISPOSAL	
Town of Hempstead	X
SEWAGE COLLECTION	
Sewage Collection District #3-NH	28

SPECIAL DISTRICTS	
PUBLIC PARKING	
Merrick	119
SEWER	
Nassau County Sewage Disposal District #3	38
PARK	
Town of Hempstead	V
IMPROVEMENT	
SIDEWALK	

DRAINAGE	
FIRE HYDRANT RENTAL	
GARBAGE	
ESCALATOR	
WATER POLLUTION CONTROL	
Town, County, College, Police HQ	1
Town Building Dept, Zoning & Appeals, Unincorporated Area	2

MUNICIPALITIES	
TOWN OF: HEMPSTEAD	
NORTH HEMPSTEAD	
OYSTER BAY	
CITY OF: GLEN COVE	
LONG BEACH	
VILLAGE OF:	
SCHOOL DISTRICT	
Merrick	28



Nassau County
Department of Assessment
Charles O'Shea, Chairman
Land & Tax Map

Map Last Revised: October 30 2003

SEC. 55
BLK. 134-1 SHEET 1 OF 1

CODE	SPECIAL	DISTRICT	WITHIN	CODE	SPECIAL	DISTRICT	WITHIN	CODE	SPECIAL	DISTRICT	WITHIN
128	1	119	2	28	3	38	47	4D	87	V	X

COPYRIGHT 1988 NASSAU COUNTY