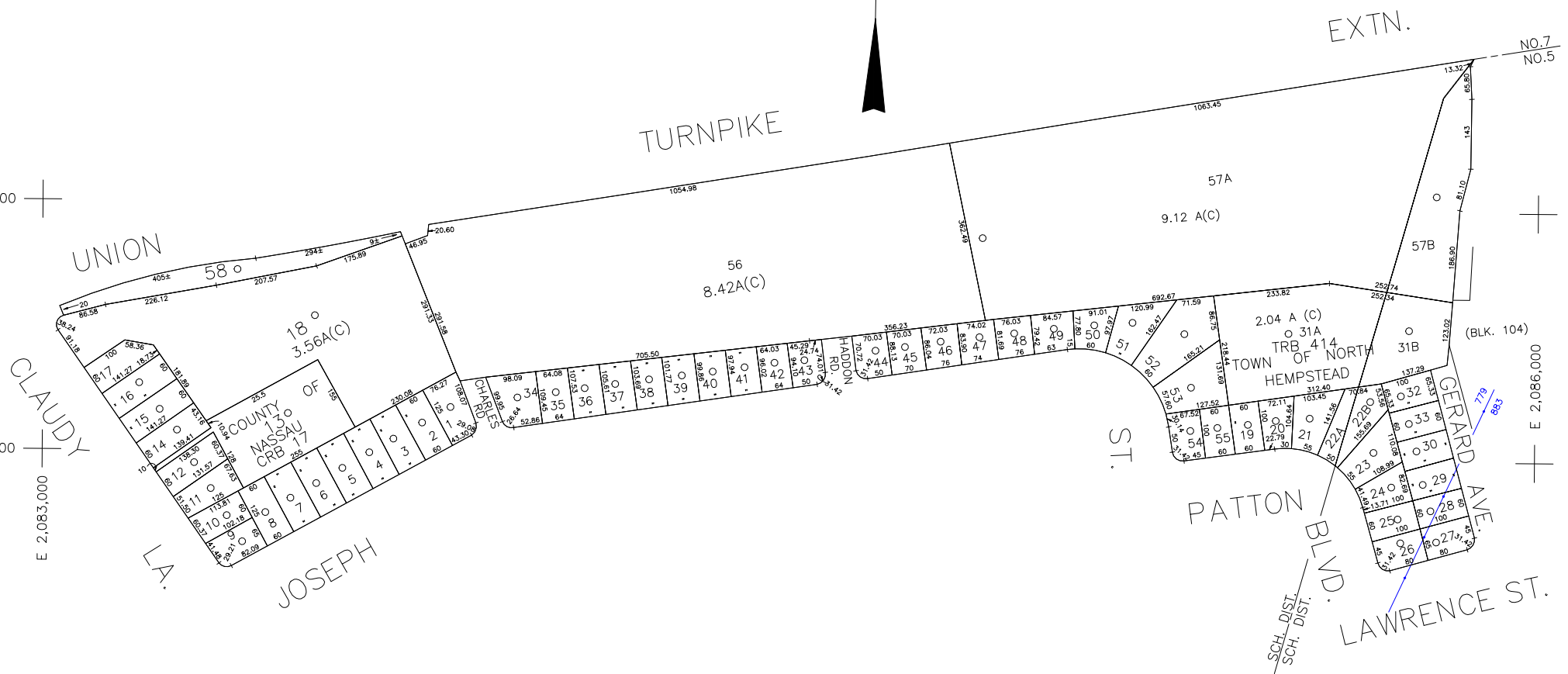


N 192,500
N 192,000
E 2,083,000



LEGEND

COUNTY LINE	---
TOWN LINE	---
VILLAGE LINE	---
SCHOOL DISTRICT LINE	---
PROPERTY LINE	---
SPECIAL DISTRICT LINE	---
BLOCK LIMIT	---
LOCATOR POINT	*
TAX MAP PARCEL NO.	246
CALCULATED ACREAGE	794(C)
DEED ACREAGE	176
SCALED DIMENSION	327(S)
DEED DIMENSION	185.69

POLICE

County Police	3
Manhasset-Lakeville	10
Town of North Hempstead	30
Manhasset-Lakeville	46
New Hyde Park	47

FIRE PROTECTION

Sanitary	
REFUSE & GARBAGE	
REFUSE DISPOSAL	
SEWAGE COLLECTION	
Sewage Collection District #2-NHP	H

SPECIAL DISTRICTS

PUBLIC PARKING	
SEWER	
Nassau County Sewage Disposal District # 2	202
PARK	
New Hyde Park	66
IMPROVEMENT	
SIDEWALK	
Town of North Hempstead	8

DRAINAGE

FIRE HYDRANT RENTAL	
GARBAGE	
ESCALATOR	
WATER POLLUTION CONTROL	
Town, County, College, Police HQ	1
Town Highway	7

MUNICIPALITIES

TOWN OF: HEMPSTEAD	
NORTH HEMPSTEAD	
OYSTER BAY	
CITY OF: GLEN COVE	
LONG BEACH	
VILLAGE OF:	
SCHOOL DISTRICT	
New Hyde Park - Garden City Park	6
Great Neck	7



Nassau County
Department of Assessment
Charles O'Shea, Chairman
Land & Tax Map

Map Last Revised: June 30 2003

SEC. 8
BLK. 235
SHEET 1 OF 1

CODE	SPECIAL	DISTRICT	WITHIN	CODE	SPECIAL	DISTRICT	WITHIN	CODE	SPECIAL	DISTRICT	WITHIN
779	1	10	2	202	3	30	46	88	88	H	8
885	1	2	202	3	30	47	66	88	H	8	