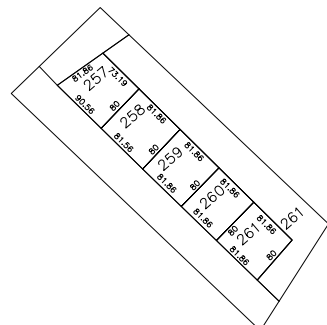
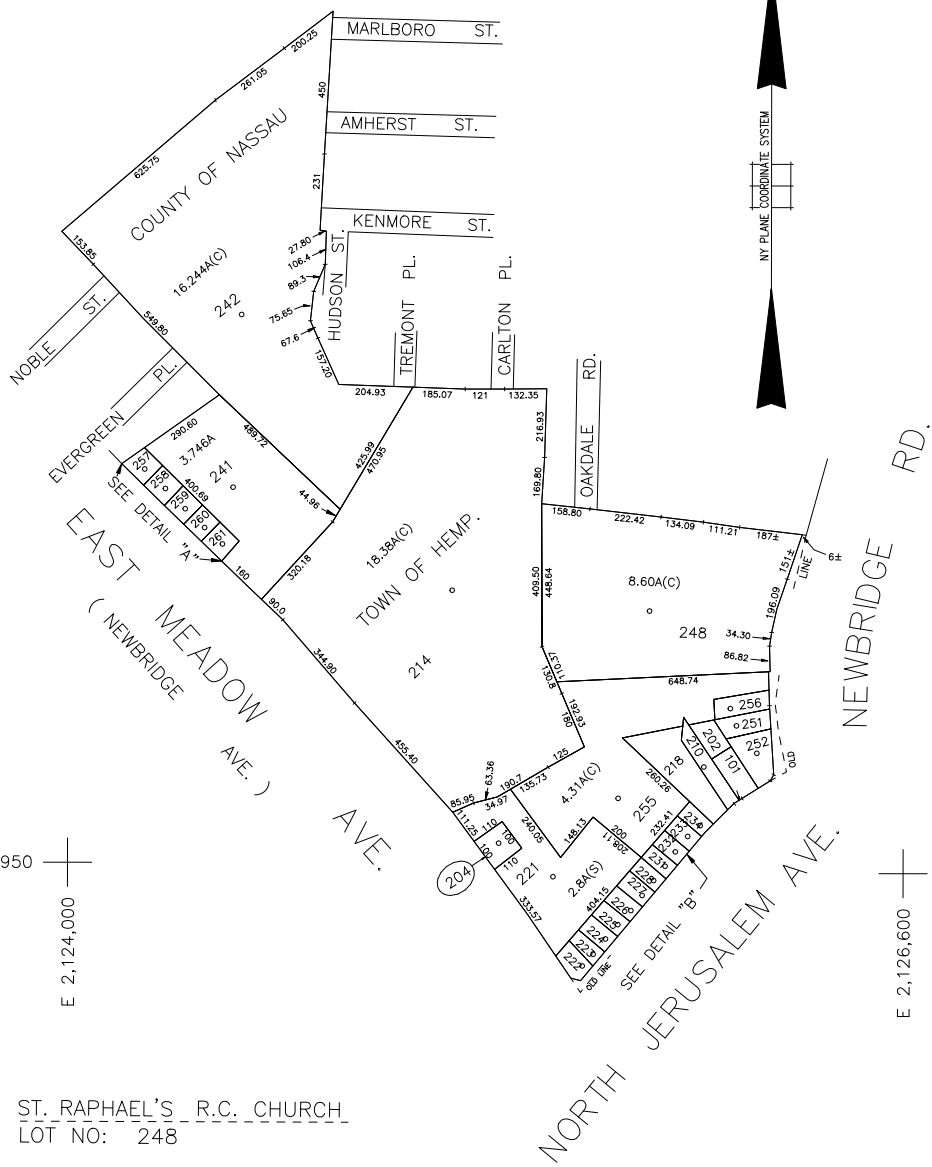


N 177,750



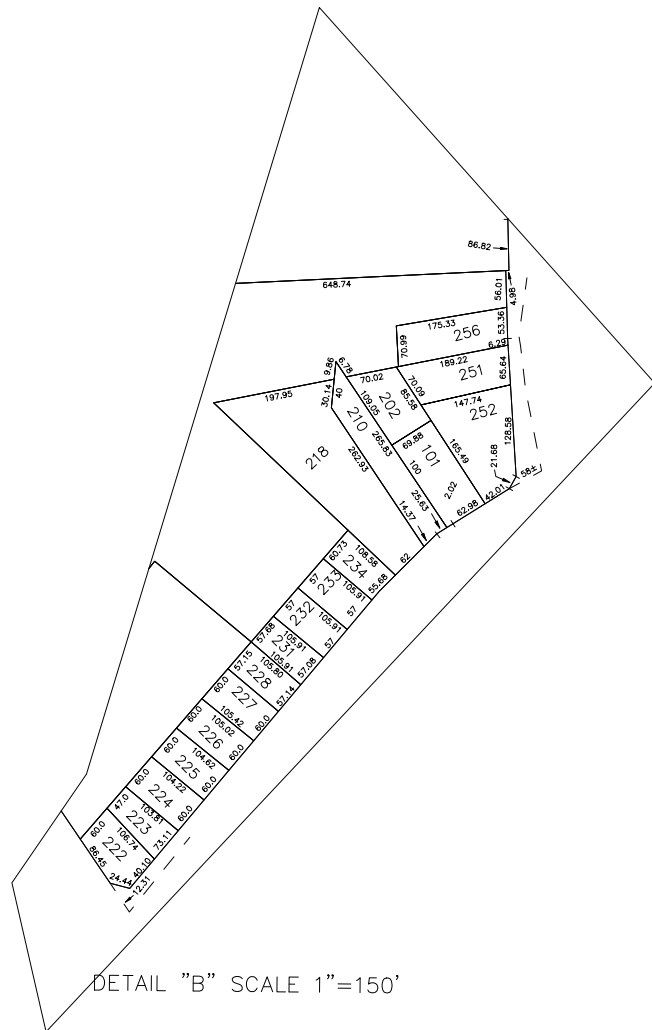
DETAIL "A" SCALE 1"=150'

N 174,950

E 2,124,000

ST. RAPHAEL'S R.C. CHURCH
LOT NO: 248

E 2,126,600



DETAIL "B" SCALE 1"=150'

LEGEND

COUNTY LINE	---
TOWN LINE	---
VILLAGE LINE	---
SCHOOL DISTRICT LINE	---
PROPERTY LINE	---
SPECIAL DISTRICT LINE	---
BLOCK LIMIT	---
LOCATOR POINT	*
TAX MAP PARCEL NO.	246
CALCULATED ACREAGE	734(C)
DEED ACREAGE	174
SCALED DIMENSION	327(S)
DEED DIMENSION	185.69
REFERENCE MAPS	
MAP NO.	

DIST	POLICE
3	County Police
DIST	WATER
9	East Meadow
DIST	LIGHTING
47	Town of Hempstead
DIST	LIBRARY
71	North Bellmore

SPECIAL DISTRICTS

DIST	FIRE PROTECTION
	SANITARY
DIST	REFUSE & GARBAGE
L	Town of Hempstead
DIST	REFUSE DISPOSAL
X	Town of Hempstead
DIST	SEWAGE COLLECTION
24	Sewage Collection District #3-EM

SPECIAL DISTRICTS

DIST	PUBLIC PARKING
DIST	SEWER
39	Nassau County Sewage Disposal District #3
DIST	PARK
V	Town of Hempstead
DIST	IMPROVEMENT
DIST	SIDEWALK

SPECIAL DISTRICTS

DIST	DRAINAGE
DIST	FIRE HYDRANT RENTAL
DIST	GARBAGE
DIST	ESCALATOR
DIST	WATER POLLUTION CONTROL
1	Town, County, College, Police HQ
2	Town Building Dept, Zoning & Appeals, Unincorporated Area

MUNICIPALITIES

DIST	TOWN OF:
	HEMPSTEAD
	NORTH HEMPSTEAD
	OYSTER BAY
	CITY OF GLEN COVE
	LONG BEACH
	VILLAGE OF:
DIST	SCHOOL DISTRICT
3	East Meadow



Nassau County
Department of Assessment
Charles O'Shea, Chairman
Land & Tax Map

Map Last Revised: July 29 2003

SEC. 50
BLK. L

SHEET 1 OF 1

CODE	SPECIAL	DISTRICT	WITHIN	CODE	SPECIAL	DISTRICT	WITHIN	CODE	SPECIAL	DISTRICT	WITHIN
328	1	2	24	3	39	47	71	9	L	V	X