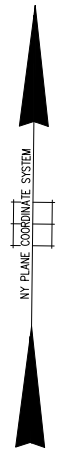
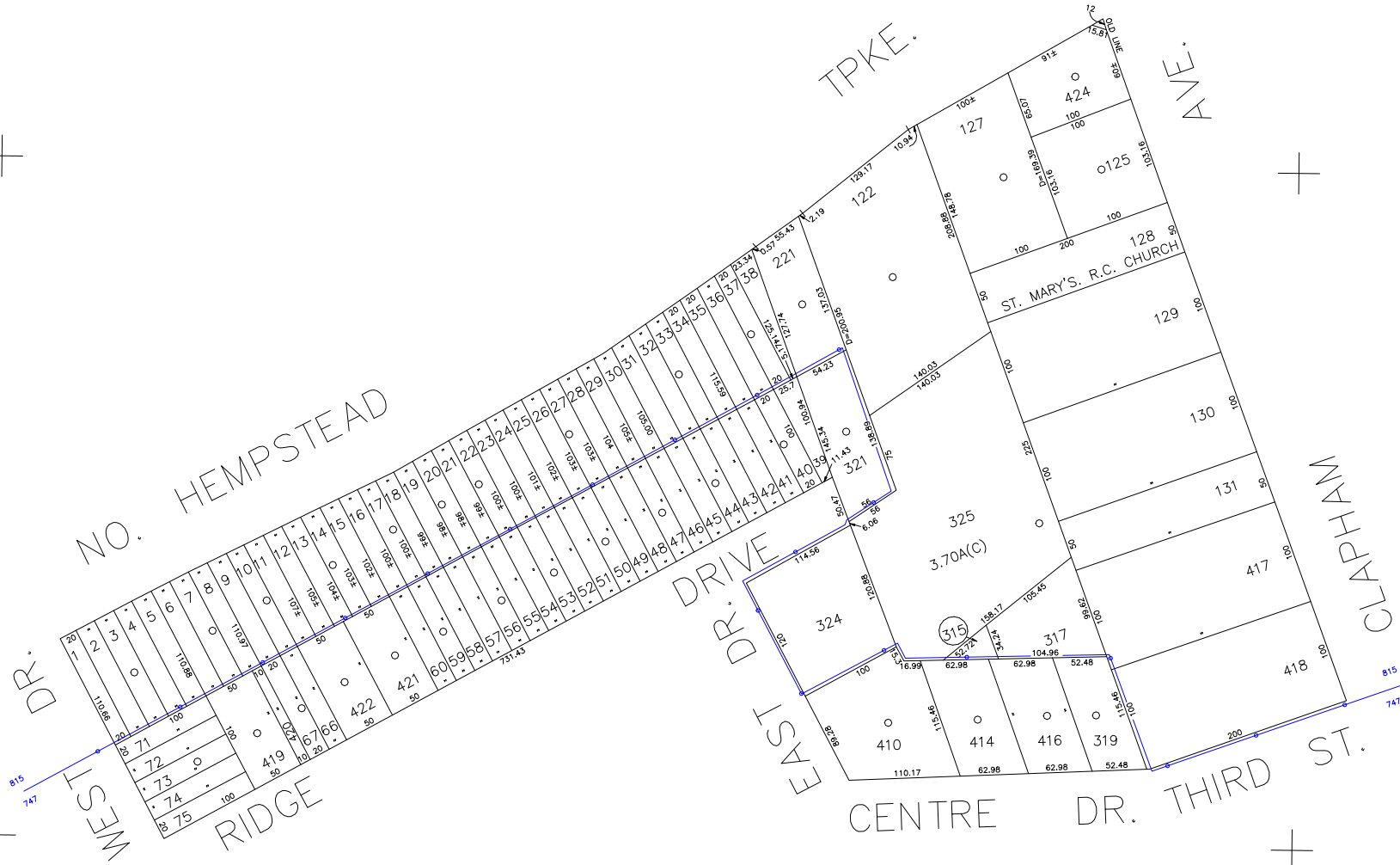


N 206,500

N 205,850

E 2,082,250

E 2,083,500



COPYRIGHT 1988 NASSAU COUNTY

LEGEND	
COUNTY LINE	---
TOWN LINE	- - - -
VILLAGE LINE	— · — · — ·
SCHOOL DISTRICT LINE	— · — · — ·
PROPERTY LINE	— · — · — ·
SPECIAL DISTRICT LINE	— · — · — ·
BLOCK LIMIT	— · — · — ·
LOCATOR POINT	*
TAX MAP PARCEL NO.	246
CALCULATED ACREAGE	734(C)
DEED ACREAGE	174
SCALED DIMENSION	327(S)
DEED DIMENSION	185.89
REFERENCE MAPS	
MAP NO.	

POLICE		DIST
County Police		3
Manhasset-Lakeville		10
Town of North Hempstead		30
Manhasset-Lakeville		46

FIRE PROTECTION		DIST
SANITARY		
REFUSE & GARBAGE		
REFUSE DISPOSAL		
SEWAGE COLLECTION		

SPECIAL DISTRICTS		DIST
PUBLIC PARKING		
SEWER		
PARK		
IMPROVEMENT		
SIDEWALK	Town of North Hempstead	8

DRAINAGE		DIST
FIRE HYDRANT RENTAL		
GARBAGE		
ESCALATOR		63
WATER POLLUTION CONTROL		62
Great Neck		1
Town, County, College, Police HQ		2
Town Highway		2

MUNICIPALITIES		DIST
TOWN OF: HEMPSTEAD		
NORTH HEMPSTEAD		
OYSTER BAY		
CITY OF: GLEN COVE		
LONG BEACH		
VILLAGE OF:		
SCHOOL DISTRICT		
Manhasset		6



Nassau County
Department of Assessment
Charles O'Shea, Chairman
Land & Tax Map

Map Last Revised: April 21 2003

SEC. 3
BLK. J

SHEET 1 OF 1

CODE	SPECIAL	DISTRICT	WITHIN	CODE	SPECIAL	DISTRICT	WITHIN	CODE	SPECIAL	DISTRICT	WITHIN
747	1	10	2	3	30	46	63	63	8		
815	1	10	2	3	30	46	63	63	8		