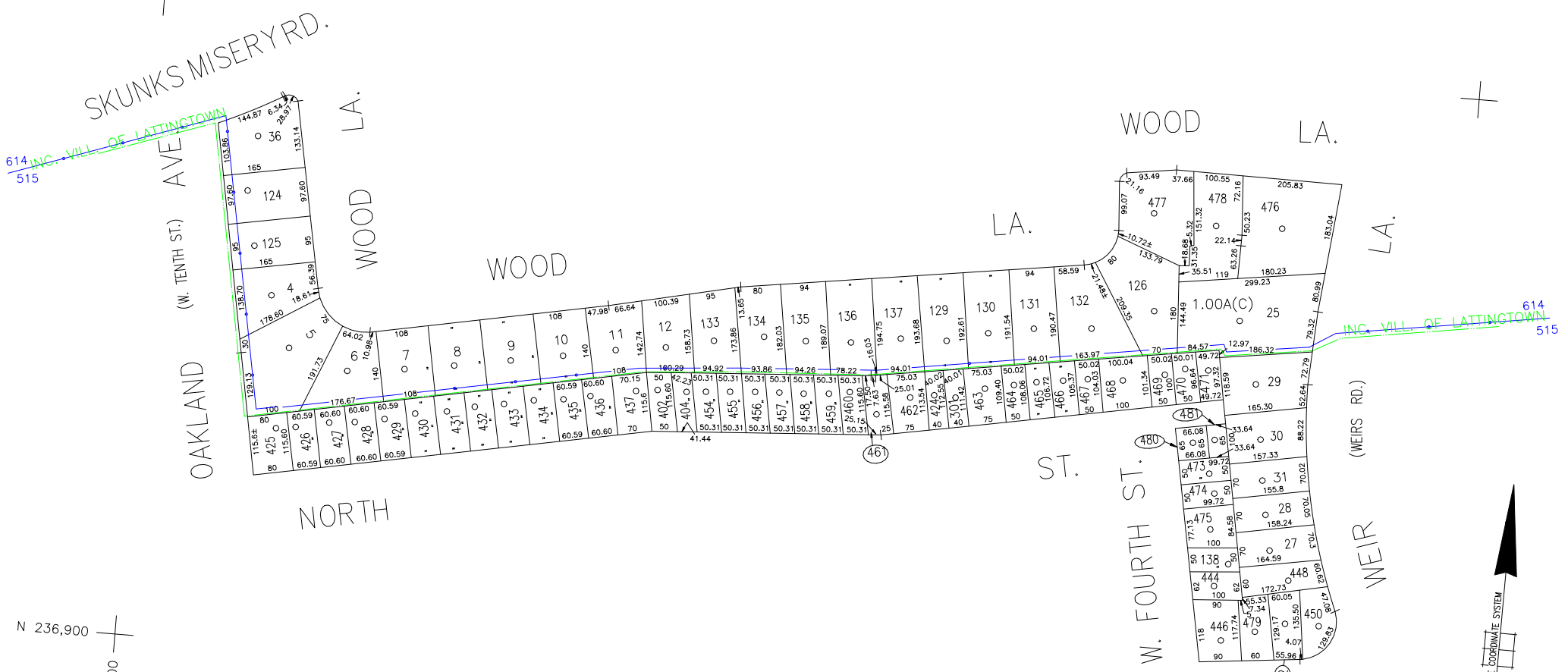


N 238,200



N 236,900  
E 2,107,800

E 2,110,500

**LEGEND**

COUNTY LINE	---
TOWN LINE	---
VILLAGE LINE	---
SCHOOL DISTRICT LINE	---
PROPERTY LINE	---
SPECIAL DISTRICT LINE	---
BLOCK LIMIT	---
LOCATOR POINT	*
TAX MAP PARCEL NO.	246
CALCULATED ACREAGE	734(C)
DEED ACREAGE	174
SCALED DIMENSION	327(S)
DEED DIMENSION	185.69
REFERENCE MAPS	
MAP NO.	

**POLICE**

County Police	DIST 3
Locust Valley	DIST 12
Town of Oyster Bay	DIST 23
Locust Valley	DIST 36

**FIRE PROTECTION**

County Police	DIST 3
Locust Valley	DIST 12
Town of Oyster Bay	DIST 23
Locust Valley	DIST 36

**SPECIAL DISTRICTS**

PUBLIC PARKING	DIST A
SEWER	DIST 88
PARK	DIST 88
IMPROVEMENT	DIST 88
SIDEWALK	DIST 88

**DRAINAGE**

Unincorporated Area of District #1	DIST D
Locust Valley	DIST 47
Garbage District #2	DIST 53
Escalator	DIST 1
Water Pollution Control	DIST 2

**MUNICIPALITIES**

TOWN OF: HEMPSTEAD	DIST 4
NORTH HEMPSTEAD	DIST 4
OYSTER BAY	DIST 4
CITY OF: GLEN COVE	DIST 4
LONG BEACH	DIST 4
VILLAGE OF:	DIST 4
SCHOOL DISTRICT	DIST 4
Locust Valley	DIST 4



**Nassau County**  
**Department of Assessment**  
Charles O'Shea, Chairman  
**Land & Tax Map**  
Map Last Revised: January 8 2003

**SEC. 30**  
**BLK. 66**

**SHEET 1 OF 1**

CODE	SPECIAL	DISTRICT	WITHIN	CODE	SPECIAL	DISTRICT	WITHIN	CODE	SPECIAL	DISTRICT	WITHIN
614	1	12	2	29	3	36	47	63	66	68	A
614	1	12	3	36	47						