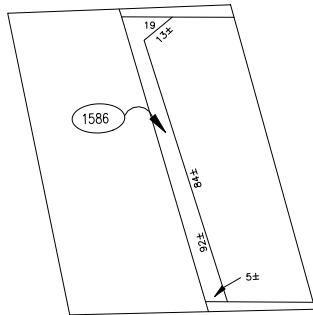




DETAIL SCALE- 1"=30'

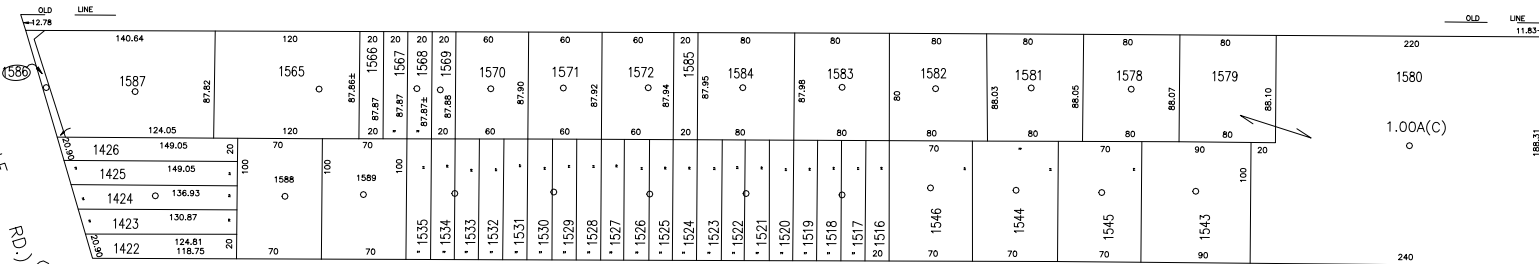
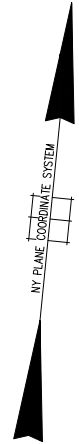


N 170,400

JERUSALEM

AVE.

CENTRAL AVE.



N 169,900

HAMILTON

AVE.

E 2,146,000

MASSAPEQUA JEW CNTR.
LOT NO: 1579 & 1580

LEGEND	
COUNTY LINE	---
TOWN LINE	- - - -
VILLAGE LINE	- · - · - ·
SCHOOL DISTRICT LINE	- · - · - ·
PROPERTY LINE	---
SPECIAL DISTRICT LINE	- · - · - ·
BLOCK LIMIT	---
LOCATOR POINT	*
TAX MAP PARCEL NO.	246
CALCULATED ACREAGE	754(C)
DEED ACREAGE	174
SCALED DIMENSION	327(S)
DEED DIMENSION	185.69
REFERENCE MAPS	
MAP NO.	

POLICE		DIST
County Police		3
Water		
Messapequ		
Lighting		
Town of Oyster Bay		23
Library		
Fire		
Messapequ		36

FIRE PROTECTION		DIST
Sanitary		
Refuse & Garbage		
Refuse Disposal		
Sewage Collection		
Sewage Collection District #3-S		29
Library		65

SPECIAL DISTRICTS		
Public Parking		
Town of Oyster Bay - Unincorporated Area		A
Sewer		
Nassau County Sewage Disposal District #3		39
Park		
Messapequ		69
Improvement		
Sidewalk		

DRAINAGE		DIST
Unincorporated Area of District #1		D
Fire Hydrant Rental		
Garbage		
Garbage District #1		93
Escalator		
Water Pollution Control		
Town, County, College, Police HQ		1
Town Highway		2

MUNICIPALITIES	
TOWN OF:	
HEMPSTEAD	
NORTH HEMPSTEAD	
OYSTER BAY	
CITY OF:	
GLEN COVE	
LONG BEACH	
VILLAGE OF:	
SCHOOL DISTRICT	
Plainville	18



Nassau County
Department of Assessment
Charles O'Shea, Chairman
Land & Tax Map

Map Last Revised: December 9 2002

SEC. 52
BLK. 186

SHEET 1 OF 1

CODE	SPECIAL	DISTRICT	WITHIN	CODE	SPECIAL	DISTRICT	WITHIN	CODE	SPECIAL	DISTRICT	WITHIN		
584	1	13	2	23	29	3	36	39	65	69	93	A	D