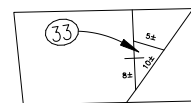


SCALE: 1" = 80'

N 178,800

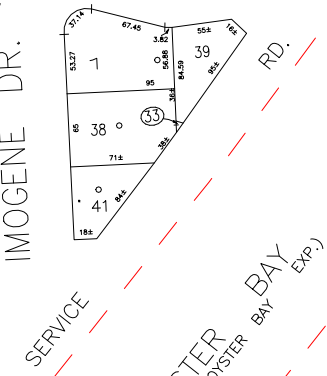
+

DETAIL SCALE - 1" = 20'

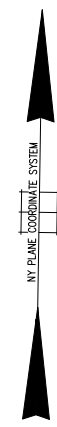


JACQUELINE RD.

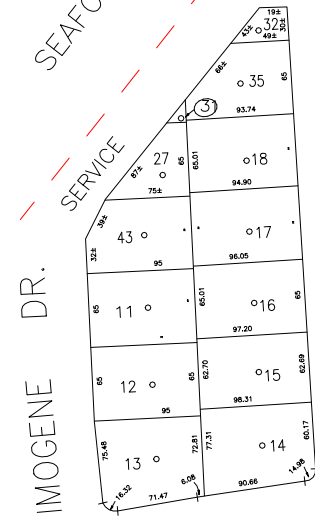
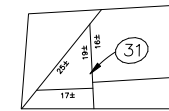
IMOGENE DR.



SERVICE SEAFORD-OYSTER BAY (WANTAGH OYSTER BAY Exp.) RD.



DETAIL SCALE - 1" = 30'



IMOGENE DR.

DR.

SENELA DR.

CHERYL RD.

N 177,800

E 2,144,500

E 2,144,000

COPYRIGHT 1998 NASSAU COUNTY

LEGEND	
COUNTY LINE	---
TOWN LINE	----
VILLAGE LINE	-----
SCHOOL DISTRICT LINE	-----
PROPERTY LINE	-----
SPECIAL DISTRICT LINE	-----
BLOCK LIMIT	-----
LOCATOR POINT	*
TAX MAP PARCEL NO.	246
CALCULATED ACREAGE	754(C)
DEED ACREAGE	176
SCALED DIMENSION	327(S)
DEED DIMENSION	185.69
REFERENCE MAPS	
MAP NO.	

POLICE	
County Police	3
South Farmingdale & Ext. #1	16
Town of Oyster Bay	23
Bethpage	31
North Massapequa	37

FIRE PROTECTION	
Sanitary	
Refuse & Garbage	
Refuse Disposal	
Sewage Collection	
Bethpage	21
North Massapequa	35

SPECIAL DISTRICTS	
Public Parking	
Sewer	
Park	
Improvement	
Sidewalk	

MUNICIPALITIES	
Drainage	
Fire Hydrant Rental	
Garbage	
Escalator	
Water Pollution Control	

MUNICIPALITIES	
Town of: HEMPSTEAD	
NORTH HEMPSTEAD	
OYSTER BAY	
CITY OF: GLEN COVE	
LONG BEACH	
VILLAGE OF:	
SCHOOL DISTRICT	
Plainville	18



**Nassau County**  
**Department of Assessment**  
 Charles O'Shea, Chairman  
**Land & Tax Map**

Map Last Revised: December 9 2002

**SEC. 52**  
**BLK. 412**

**SHEET 1 OF 1**

CODE	SPECIAL	DISTRICT	WITHIN	CODE	SPECIAL	DISTRICT	WITHIN	CODE	SPECIAL	DISTRICT	WITHIN		
549	1	16	2	21	28	3	31	39	55	62	93	A	D
615	1	16	2	21	28	3	37	39	55	59	59	A	D