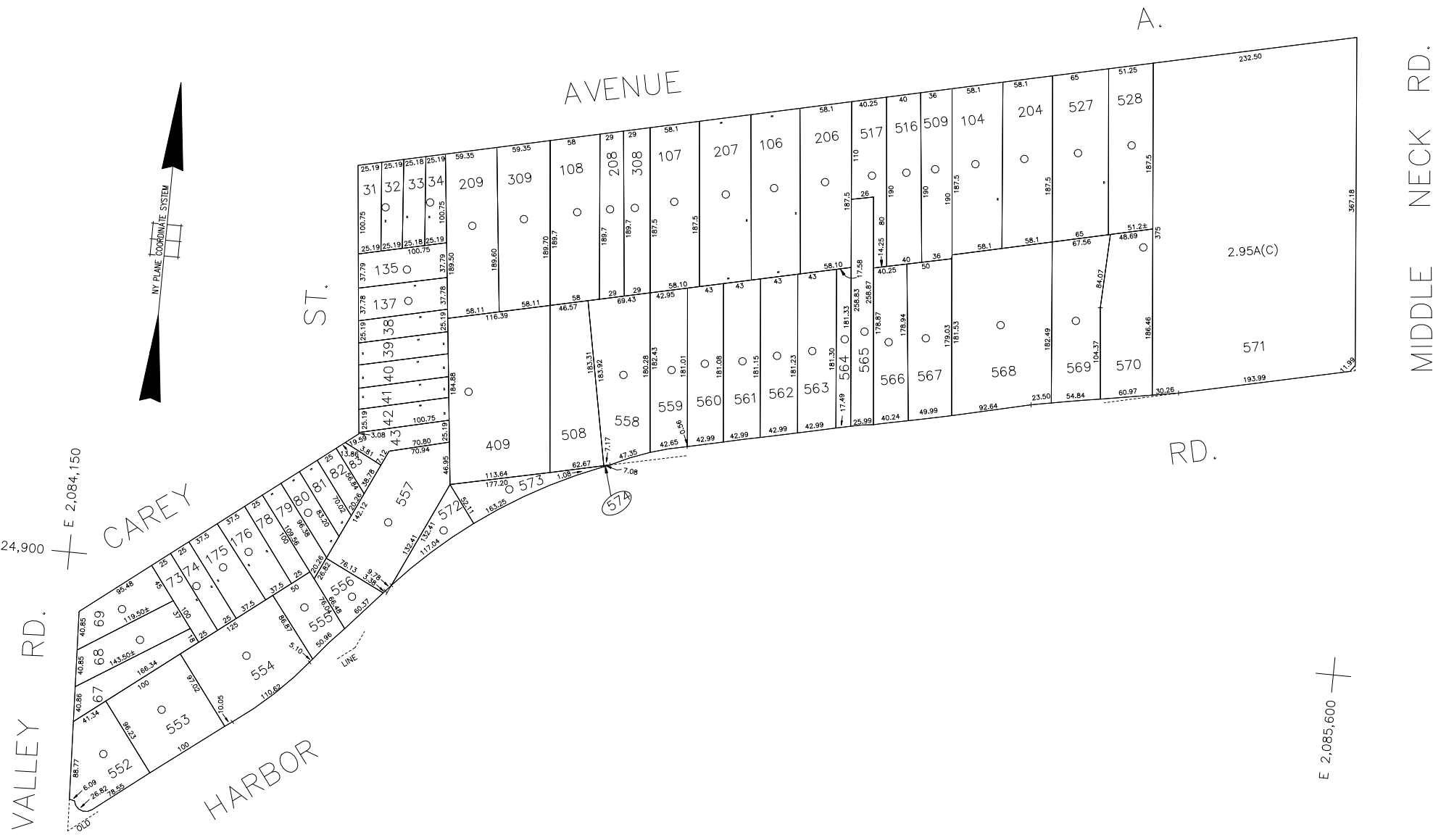


N 225,700

80' 40' 0' 80' 160'

SCALE: 1" = 80'



N 224,900

E 2,084,150

VALLEY RD.

CAREY ST.

HARBOR AVENUE

RD.

MIDDLE NECK RD.

E 2,085,600

**LEGEND**

COUNTY LINE	---
TOWN LINE	---
VILLAGE LINE	---
SCHOOL DISTRICT LINE	---
PROPERTY LINE	---
SPECIAL DISTRICT LINE	---
BLOCK LIMIT	---
LOCATOR POINT	*
TAX MAP PARCEL NO.	246
CALCULATED ACREAGE	754(C)
DEED ACREAGE	174
SCALED DIMENSION	327(S)
DEED DIMENSION	185.69
REFERENCE MAPS	
MAP NO.	

**SPECIAL DISTRICTS**

DIST	DIST	DIST	DIST
<b>POLICE</b>	<b>FIRE PROTECTION</b>	<b>PUBLIC PARKING</b>	<b>DRAINAGE</b>
Port Washington	Port Washington	Port Washington	
4	49	72	
<b>WATER</b>	<b>SANITARY</b>	<b>SEWER</b>	<b>FIRE HYDRANT RENTAL</b>
Port Washington			
13			
<b>LIGHTING</b>	<b>REFUSE &amp; GARBAGE</b>	<b>PARK</b>	<b>GARBAGE</b>
Town of North Hempstead			Port Washington
30			64
<b>LIBRARY</b>	<b>REFUSE DISPOSAL</b>	<b>IMPROVEMENT</b>	<b>ESCALATOR</b>
<b>FIRE</b>	<b>SEWAGE COLLECTION</b>	<b>SIDEWALK</b>	Town of North Hempstead
		8	

**MUNICIPALITIES**

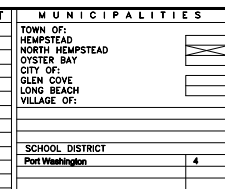
TOWN OF:	HEMPSTEAD
NORTH HEMPSTEAD	
OYSTER BAY	
CITY OF:	GLEN COVE
LONG BEACH	
VILLAGE OF:	
SCHOOL DISTRICT	
Port Washington	4

**SEC. 4**

**BLK. 36**

**SHEET 1 OF 1**

**Map Last Revised: June 25 2003**



**Nassau County**  
**Department of Assessment**  
*Charles O'Shea, Chairman*  
**Land & Tax Map**

CODE	SPECIAL	DISTRICT	WITHIN	CODE	SPECIAL	DISTRICT	WITHIN	CODE	SPECIAL	DISTRICT	WITHIN
809	1	13	2	30	4	49	64	72	89	8	