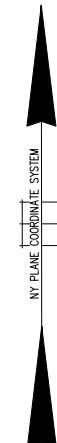


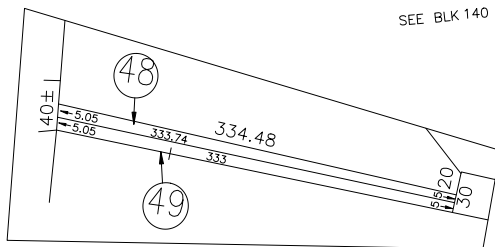
N 220,500



N 218,400

E 2,067,200

E 2,069,800



DETAIL SCALE 1"=80'

LEGEND	
COUNTY LINE	---
TOWN LINE	- - - -
VILLAGE LINE	— · — · —
SCHOOL DISTRICT LINE	— · — · —
PROPERTY LINE	— · — · —
SPECIAL DISTRICT LINE	— · — · —
BLOCK LIMIT	— · — · —
LOCATOR POINT	•
TAX MAP PARCEL NO.	246
CALCULATED ACREAGE	754(C)
DEED ACREAGE	174
SCALED DIMENSION	327(S)
DEED DIMENSION	185.69
REFERENCE MAPS	
MAP NO.	

POLICE		DIST	

FIRE PROTECTION		DIST	

PUBLIC PARKING		DIST	

DRAINAGE		DIST	

MUNICIPALITIES		DIST	

SCHOOL DISTRICT		DIST	

**SEC. 1**  
**BLK. 176**  
**SHEET 1 OF 1**

**Nassau County**  
**Department of Assessment**  
Charles O'Shea, Chairman  
**Land & Tax Map**

Map Last Revised: February 25 2003

CODE	SPECIAL	DISTRICT	WITHIN	CODE	SPECIAL	DISTRICT	WITHIN	CODE	SPECIAL	DISTRICT	WITHIN
799	1	57									