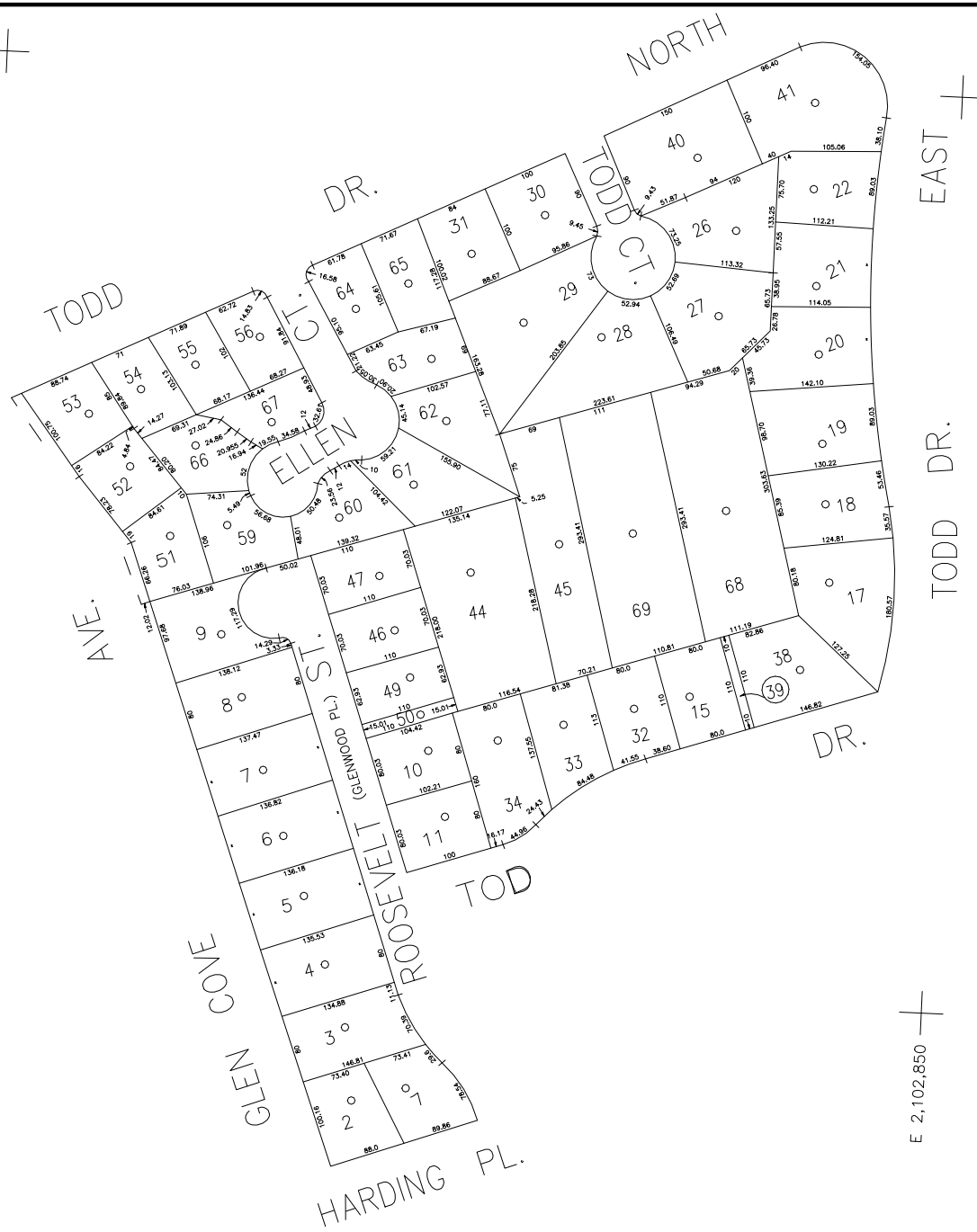


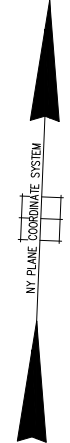
N 223,150

100' 50' 0' 100' 200'  
SCALE: 1" = 100'



N 222,100  
E 2,101,750

E 2,102,850



**LEGEND**

COUNTY LINE	---
TOWN LINE	---
VILLAGE LINE	---
SCHOOL DISTRICT LINE	---
PROPERTY LINE	---
SPECIAL DISTRICT LINE	---
BLOCK LIMIT	---
LOCATOR POINT	*
TAX MAP PARCEL NO.	246
CALCULATED ACREAGE	754(C)
DEED ACREAGE	174
SCALED DIMENSION	327(S)
DEED DIMENSION	185.69
REFERENCE MAPS	
MAP NO.	

DIST	DIST	DIST	DIST
<b>POLICE</b>			
County Police	3		
<b>WATER</b>			
Glenwood-Glen Head	7		
<b>LIGHTING</b>			
Town of Oyster Bay	23		
<b>LIBRARY</b>			
<b>FIRE</b>			

DIST	DIST	DIST	DIST
<b>FIRE PROTECTION</b>			
Glenwood - Glen Head	41		
<b>SEWERY</b>			
<b>REFUSE &amp; GARBAGE</b>			
<b>REFUSE DISPOSAL</b>			
<b>SEWAGE COLLECTION</b>			

DIST	DIST	DIST	DIST
<b>PUBLIC PARKING</b>			
Town of Oyster Bay - Unincorporated Area	A		
<b>SEWER</b>			
<b>PARK</b>			
Glenwood - Glen Head	63		
<b>IMPROVEMENT</b>			
<b>SIDEWALK</b>			

DIST	DIST	DIST	DIST
<b>DRAINAGE</b>			
Unincorporated Area of District #1	D		
<b>FIRE HYDRANT RENTAL</b>			
<b>GARBAGE</b>			
Glenwood - Glen Head	50		
<b>ESCALATOR</b>			
<b>WATER POLLUTION CONTROL</b>			
Town, County, College, Police HQ	1		
Town Highway	2		

DIST	DIST	DIST	DIST
<b>MUNICIPALITIES</b>			
TOWN OF:			
HEMPSTEAD			
NORTH HEMPSTEAD			
OYSTER BAY			
CITY OF:			
GLEN COVE			
LONG BEACH			
VILLAGE OF:			
<b>SCHOOL DISTRICT</b>			
Glenwood Landing	1		



**Nassau County**  
**Department of Assessment**  
Charles O'Shea, Chairman  
**Land & Tax Map**

Map Last Revised: January 7 2003

**SEC. 21**  
**BLK. 226**

**SHEET 1 OF 1**

CODE	SPECIAL	DISTRICT	WITHIN	CODE	SPECIAL	DISTRICT	WITHIN	CODE	SPECIAL	DISTRICT	WITHIN
801	1	2	23	3	41	50	63	7	A	D	

COPYRIGHT 1982 NASSAU COUNTY