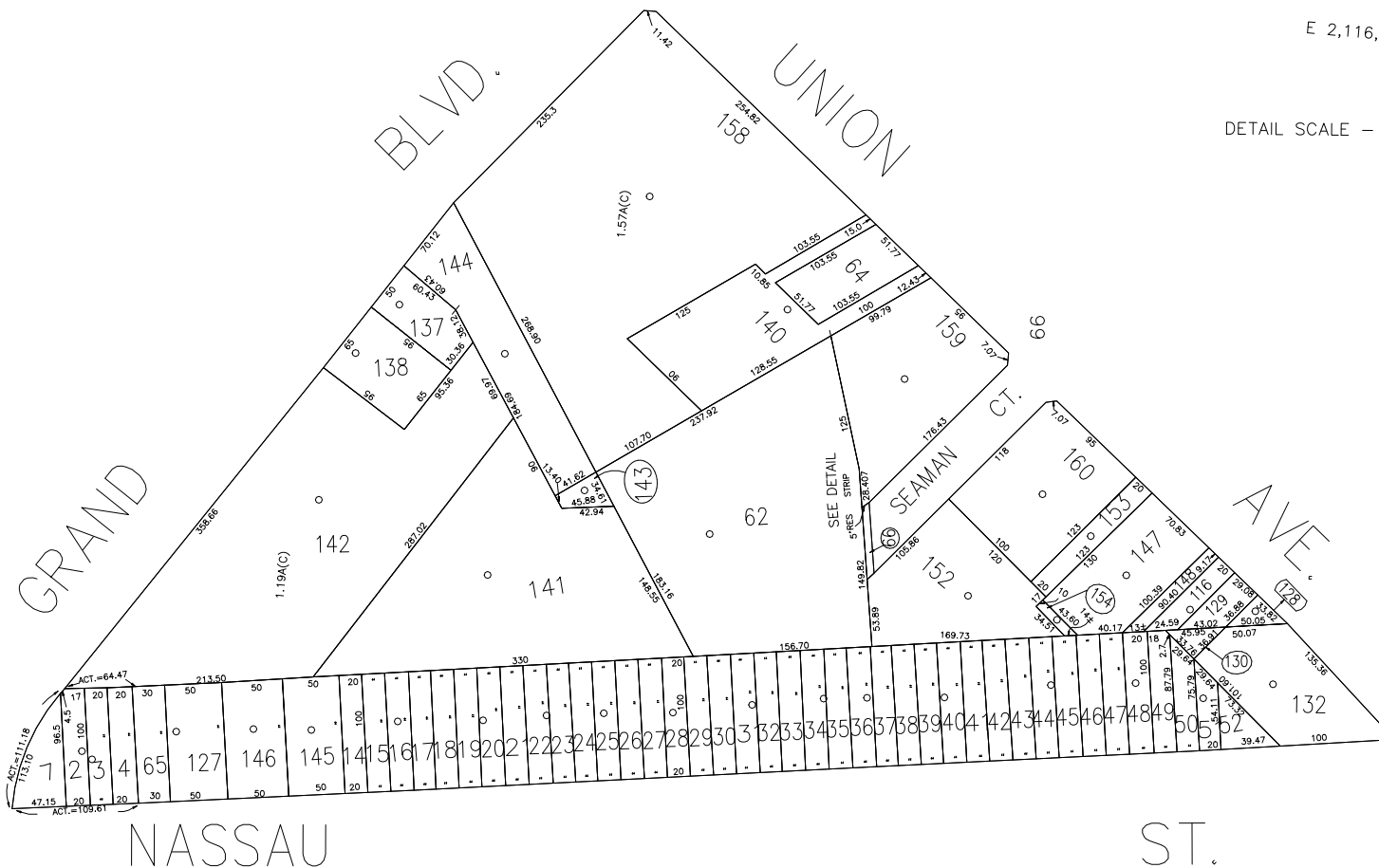
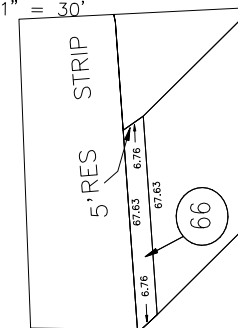




E 2,116,650

DETAIL SCALE - 1" = 30'



N 195,000

INC. VILLAGE OF WESTBURY
LOT NOS: 34, 35, 62, 66, 141 & 143

E 2,115,800
N 193,800

LEGEND

COUNTY LINE	---
TOWN LINE	- - - -
VILLAGE LINE	— · — · —
SCHOOL DISTRICT LINE	— · — · —
PROPERTY LINE	— · — · —
SPECIAL DISTRICT LINE	— · — · —
BLOCK LIMIT	— · — · —
LOCATOR POINT	*
TAX MAP PARCEL NO.	246
CALCULATED ACREAGE	794(C)
DEED ACREAGE	174
SCALED DIMENSION	327(S)
DEED DIMENSION	185.69
REFERENCE MAPS	
MAP NO.	

POLICE	
County Police	3
WATER	
Westbury	16
LIGHTING	
LIBRARY	
FIRE	
Westbury	61

SPECIAL DISTRICTS

FIRE PROTECTION	
SANITARY	
REFUSE & GARBAGE	
REFUSE DISPOSAL	
SEWAGE COLLECTION	
Sewage Collection District #3-CP-W	62
IMPROVEMENT	
SIDEWALK	

PUBLIC PARKING	
SEWER	
Nassau County Sewage Disposal District # 3	39
PARK	
IMPROVEMENT	
SIDEWALK	

DRAINAGE	
FIRE HYDRANT RENTAL	
GARBAGE	
ESCALATOR	
WATER POLLUTION CONTROL	
Town, County, College, Police HQ	1

MUNICIPALITIES

TOWN OF: HEMPSTEAD	
NORTH HEMPSTEAD	
OYSTER BAY	
CITY OF: GLEN COVE	
LONG BEACH	
VILLAGE OF:	
SCHOOL DISTRICT	
Westbury	1



Nassau County
Department of Assessment
Charles O'Shea, Chairman
Land & Tax Map

Map Last Revised: May 16 2003

SEC. 10
BLK. T

SHEET 1 OF 1

CODE	SPECIAL	DISTRICT	WITHIN	CODE	SPECIAL	DISTRICT	WITHIN	CODE	SPECIAL	DISTRICT	WITHIN
709	1 15 3 30 51 52										