

100' 50' 0' 100' 200'

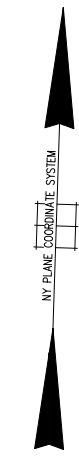
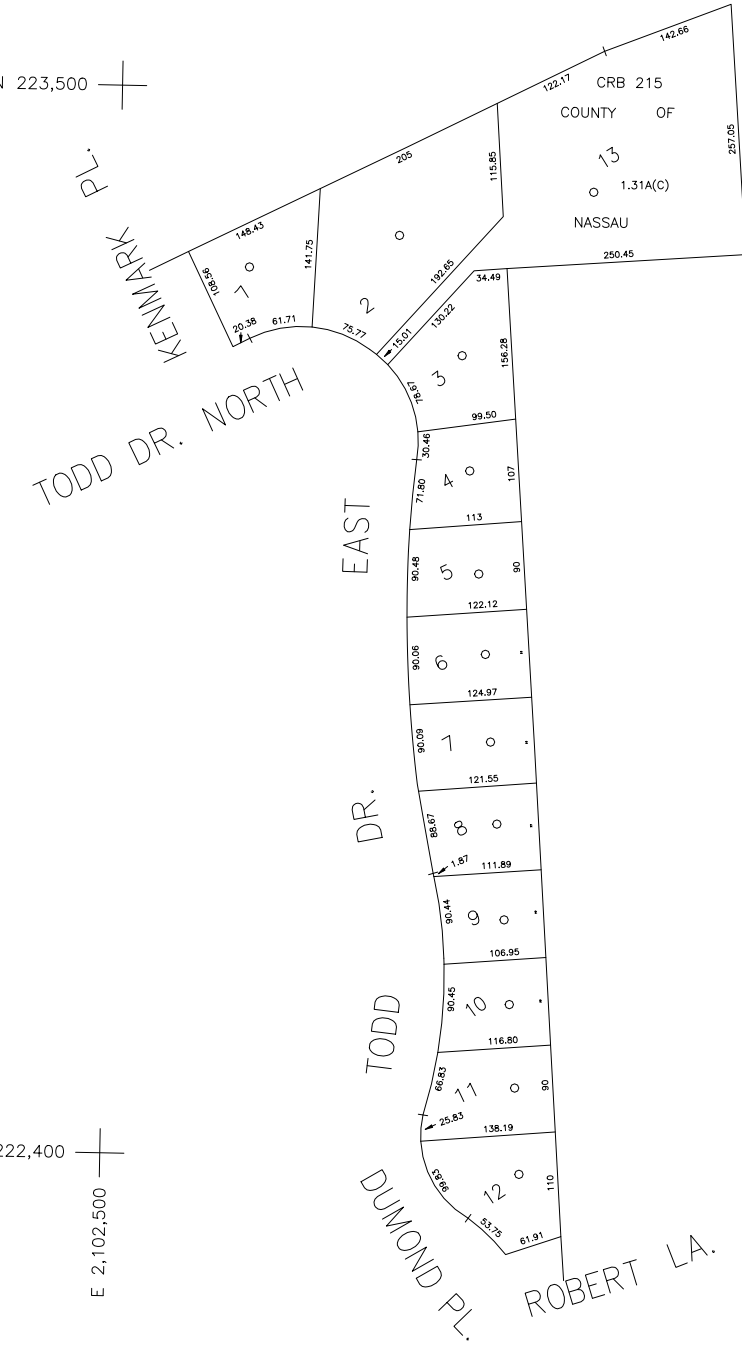
SCALE: 1" = 100'

N 223,500

N 222,400

E 2,102,500

E 2,103,200



COPYRIGHT 1988 NASSAU COUNTY

LEGEND	
COUNTY LINE	---
TOWN LINE	- - - -
VILLAGE LINE	- · - · - ·
SCHOOL DISTRICT LINE	- · - · - ·
PROPERTY LINE	---
SPECIAL DISTRICT LINE	---
BLOCK LIMIT	---
LOCATOR POINT	*
TAX MAP PARCEL NO.	246
CALCULATED ACREAGE	734(C)
DEED ACREAGE	174
SCALED DIMENSION	327(S)
DEED DIMENSION	185.89
REFERENCE MAPS	
MAP NO.	

POLICE	DIST
County Police	3
Water	
Glenwood-Glen Head	7
Lighting	
Town of Oyster Bay	23
Library	
Fire	

FIRE PROTECTION	DIST
Glenwood - Glen Head	41
Sanitary	
Refuse & Garbage	
Refuse Disposal	
Sewage Collection	

SPECIAL DISTRICTS	
Public Parking	
Town of Oyster Bay - Unincorporated Area	A
Sewer	
Park	
Glenwood - Glen Head	83
Improvement	
Sidewalk	

Drainage	DIST
Unincorporated Area of District #1	D
Fire Hydrant Rental	
Garbage	
Glenwood - Glen Head	50
Escalator	
Water Pollution Control	
Town, County, College, Police Hd	1
Town Highway	2

MUNICIPALITIES	
Town of:	
Hempstead	
North Hempstead	
Oyster Bay	
City of:	
Glen Cove	
Long Beach	
Village of:	
School District	
Glenwood Landing	1



**Nassau County**  
**Department of Assessment**  
*Charles O'Shea, Chairman*  
**Land & Tax Map**

Map Last Revised: January 7 2003

**SEC. 21**  
**BLK. 232**

**SHEET 1 OF 1**

CODE	SPECIAL	DISTRICT	WITHIN	CODE	SPECIAL	DISTRICT	WITHIN	CODE	SPECIAL	DISTRICT	WITHIN
801	1	2	23	3	41	50	83	7	A	D	