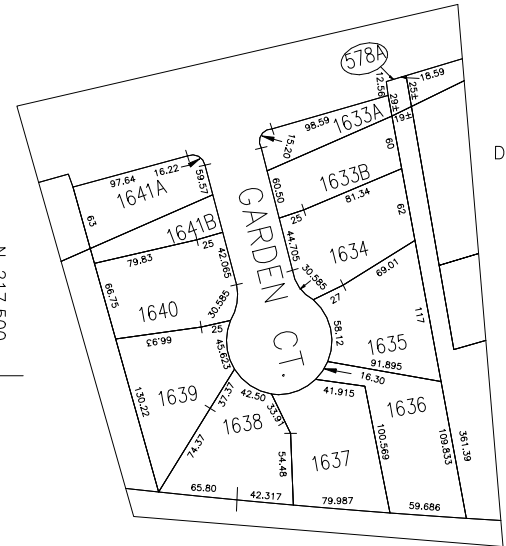
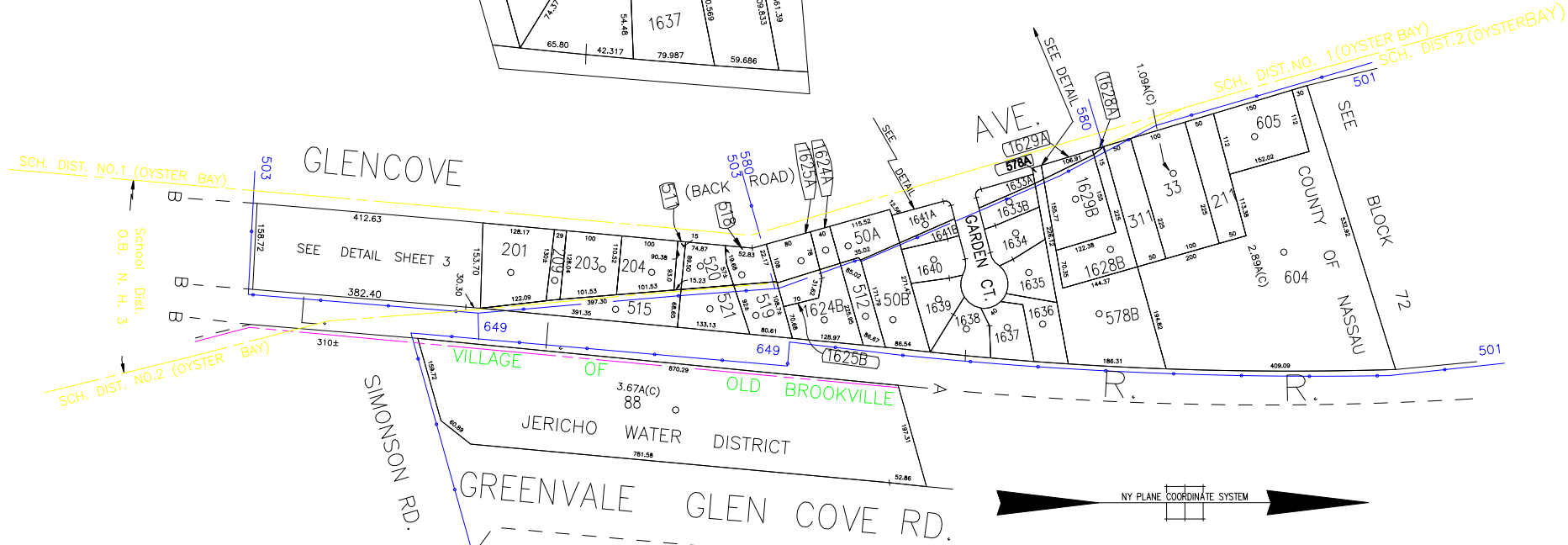


DETAIL SCALE - 1" = 80'

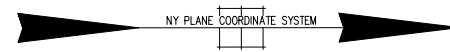


N 217,500
E 2,102,700

N 219,400



E 2,104,200



EAST

LEGEND

COUNTY LINE	---
TOWN LINE	---
VILLAGE LINE	---
SCHOOL DISTRICT LINE	---
PROPERTY LINE	---
SPECIAL DISTRICT LINE	---
BLOCK LIMIT	---
LOCATOR POINT	*
TAX MAP PARCEL NO.	246
CALCULATED ACREAGE	734(C)
DEED ACREAGE	176
SCALED DIMENSION	327(S)
DEED DIMENSION	185.69

POLICE

DIST	3
County Police	
Glenwood-Glen Head	
Jericho	
Town of Oyster Bay	
LIBRARY	
FIRE	

FIRE PROTECTION

DIST	41
Glenwood - Glen Head	
SANITARY	
REFUSE & GARBAGE	
REFUSE DISPOSAL	
SEWAGE COLLECTION	

SPECIAL DISTRICTS

DIST	A
Town of Oyster Bay - Unincorporated Area	
SEWER	
PARK	
Glenwood - Glen Head	63
IMPROVEMENT	
SIDEWALK	

DRAINAGE

DIST	D
Unincorporated Area of District #1	
FIRE HYDRANT RENTAL	
GARBAGE	
Glenwood - Glen Head	50
ESCALATOR	
WATER POLLUTION CONTROL	
Town, County, College, Police HD	1
Town Highway	2

MUNICIPALITIES

TOWN OF:	
HEMPSTEAD	
NORTH HEMPSTEAD	
OYSTER BAY	
CITY OF:	
GLEN COVE	
LONG BEACH	
VILLAGE OF:	
SCHOOL DISTRICT	
Glen Head	2



Nassau County
Department of Assessment
 Harvey B. Levinson, Chairman
Land & Tax Map

Map Last Revised: January 23 2004

SEC. 20
BLK. G

SHEET 2 OF 3

CODE	SPECIAL	DISTRICT	WITHIN	CODE	SPECIAL	DISTRICT	WITHIN	CODE	SPECIAL	DISTRICT	WITHIN
501	1	2	23	3	41	50	63	7	A	D	D
503	1	10	2	23	3	41	50	A	D		
511	1	10									
580	1	2	23	3	41	50	7	A	D		
649	1	10	2	23	3	41	50	63	A	D	D