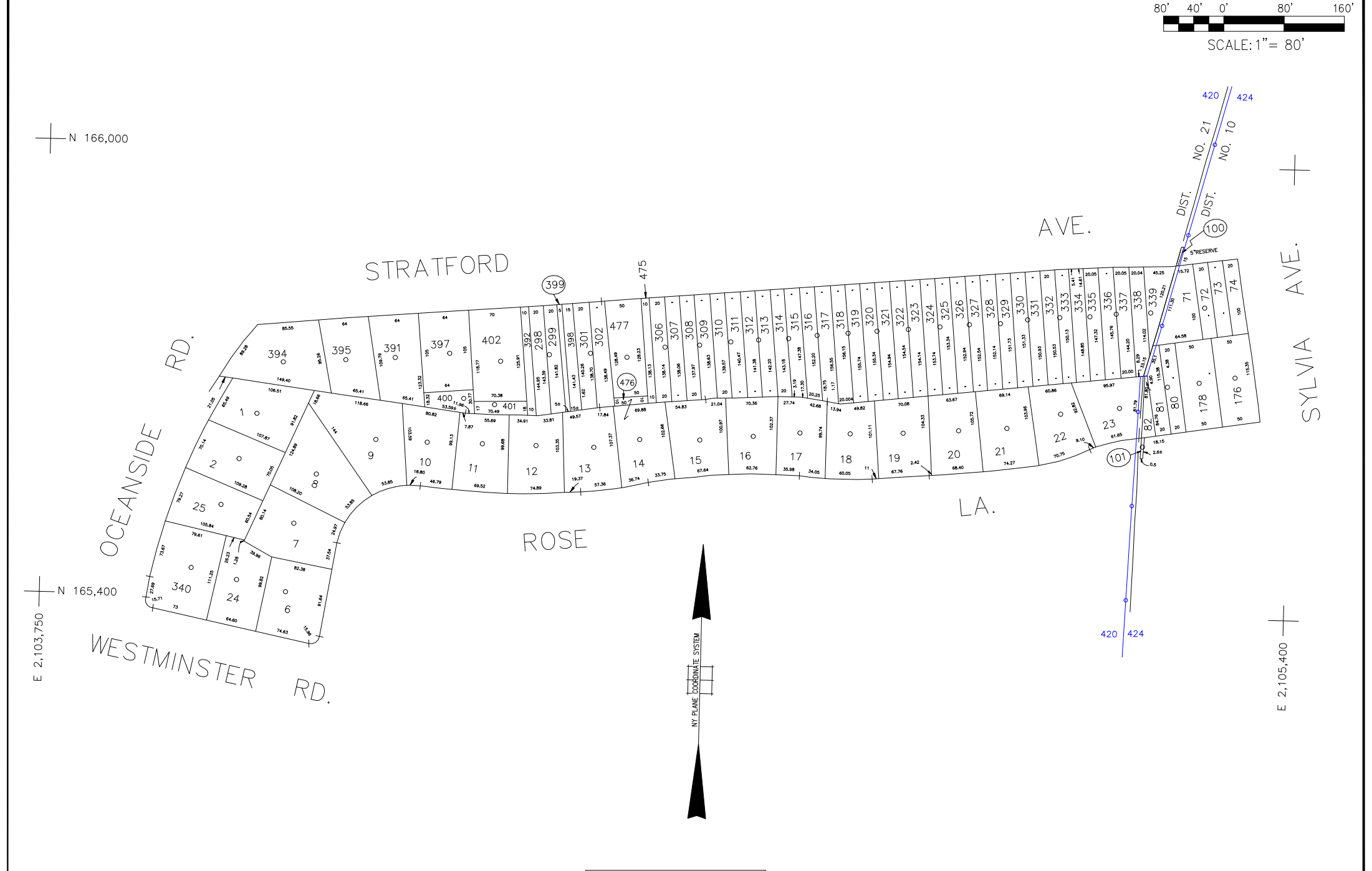


N 166,000

N 165,400
E 2,103,750

E 2,105,400



LEGEND

COUNTY LINE	---
TOWN LINE	---
VILLAGE LINE	---
SCHOOL DISTRICT LINE	---
PROPERTY LINE	---
SPECIAL DISTRICT LINE	---
BLOCK LIMIT	---
LOCATOR POINT	*
TAX MAP PARCEL NO.	246
CALCULATED ACREAGE	734(C)
DEED ACREAGE	176
SCALED DIMENSION	327(S)
DEED DIMENSION	185.69
REFERENCE MAPS	
MAP NO.	

	DIST
POLICE	
County Police	3
WATER	
Town of Hempstead	47
LIBRARY	
Belknap	55
South Hempstead	78

	DIST
FIRE PROTECTION	
Sanitary	82
Sanitary District 2	82
REFUSE & GARBAGE	
REFUSE DISPOSAL	
Town of Hempstead	X
SEWAGE COLLECTION	
Sewage Collection District #2-B	B

SPECIAL DISTRICTS	
	DIST
PUBLIC PARKING	
Belknap	10
SEWER	
Nassau County Sewage Disposal District #2	202
PARK	
Town of Hempstead	V
IMPROVEMENT	
SIDEWALK	

	DIST
DRAINAGE	
Belknap	10
FIRE HYDRANT RENTAL	
GARBAGE	
ESCALATOR	
WATER POLLUTION CONTROL	
Town, County, College, Police HQ	1
Town Building Dept. Zoning & Appeals, Unincorporated Area	2

MUNICIPALITIES	
	DIST
TOWN OF: HEMPSTEAD	
NORTH HEMPSTEAD	
OYSTER BAY	
CITY OF: GLEN COVE	
LONG BEACH	
VILLAGE OF:	
SCHOOL DISTRICT	
Belknap	10
Rockville Centre	21



Nassau County
Department of Assessment
 Harvey B. Levinson, Chairman
Land & Tax Map

Map Last Revised: June 10 2004

SEC. 36
BLK. 503

SHEET 1 OF 1

CODE	SPECIAL	DISTRICT	WITHIN
420	1	2	202 3 47 78 82 B V X
424	1	10	2 202 3 47 88 92 B V X