

N 228,200

N 227,200

N 227,000

DETAIL "A"  
SCALE 1"=100'

ROUND SWAMP LANE

SEA CLIFF AVE.

MIDWOOD PLACE.

ST.

MIDWOOD PLACE

RAILROAD

VALENTINE (ROUND SWAMP LANE)

MCGRADY AVE.

ISLAND

LONG

CITY OF OYSTER BAY



N 226,200

E 2,100,500

COVE AVE.

GLEN

WANSOR

LANE GAFFNEY

AMER. GAFFNEY AVE.

RUSSIAN UNION

CHADWICK ST.

WILLIAM ST.

BLK. 250

BLK. 206

BLK. 250

BLK. 250

BLK. 250

BLK. 250

BLK. 250

BLK. 250

BLK. 250

BLK. 250

BLK. 250

BLK. 250

BLK. 250

ALEX

ALEX

ALEX

ALEX

ALEX

ALEX

ALEX

ALEX

ALEX

ALEX

ALEX

ALEX

ALEX

ALEX

ALEX

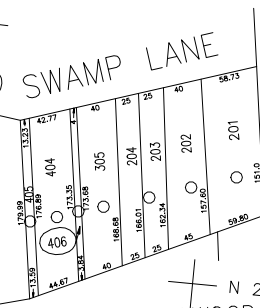
ALEX

ALEX

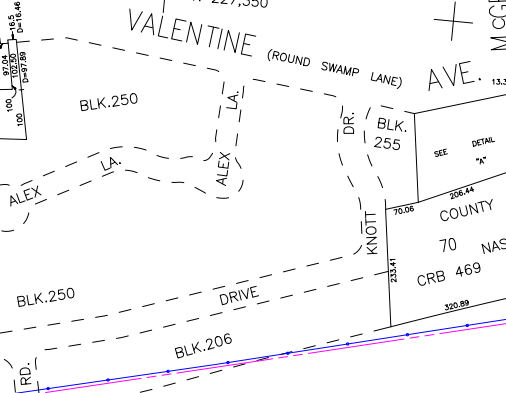
ALEX

ALEX

DETAIL "A"  
SCALE 1"=100'



DETAIL "B"  
SCALE 1"=100'



**LEGEND**

COUNTY LINE	---
TOWN LINE	---
VILLAGE LINE	---
SCHOOL DISTRICT LINE	---
PROPERTY LINE	---
SPECIAL DISTRICT LINE	---
BLOCK LIMIT	---
LOCATOR POINT	*
TAX MAP PARCEL NO.	246
CALCULATED ACREAGE	754(C)
DEED ACREAGE	176
SCALED DIMENSION	327(S)
DEED DIMENSION	185.69

**POLICE**

DIST	WITHIN
3	A D

**WATER**

DIST	WITHIN
7	A D

**LIGHTING**

DIST	WITHIN
23	A D

**LIBRARY**

DIST	WITHIN
	A D

**FIRE**

DIST	WITHIN
	A D

**FIRE PROTECTION**

DIST	WITHIN
41	A

**SANITARY**

DIST	WITHIN
	A

**REFUSE & GARBAGE**

DIST	WITHIN
	A

**REFUSE DISPOSAL**

DIST	WITHIN
	A

**SEWAGE COLLECTION**

DIST	WITHIN
	A

**PUBLIC PARKING**

DIST	WITHIN
A	A

**SEWER**

DIST	WITHIN
	A

**PARK**

DIST	WITHIN
63	A

**IMPROVEMENT**

DIST	WITHIN
	A

**SIDEWALK**

DIST	WITHIN
	A

**DRAINAGE**

DIST	WITHIN
D	D

**FIRE HYDRANT RENTAL**

DIST	WITHIN
	D

**GARBAGE**

DIST	WITHIN
	D

**ESCALATOR**

DIST	WITHIN
50	D

**WATER POLLUTION CONTROL**

DIST	WITHIN
	D

**MUNICIPALITIES**

DIST	WITHIN
	D

**SCHOOL DISTRICT**

DIST	WITHIN
1	D
6	D



**Nassau County**  
**Department of Assessment**  
Harvey B. Levinson, Chairman  
**Land & Tax Map**

Map Last Revised: June 14 2004

**SEC. 21**  
**BLK. N-1**

**SHEET 1 OF 1**

CODE	SPECIAL	DISTRICT	WITHIN	CODE	SPECIAL	DISTRICT	WITHIN	CODE	SPECIAL	DISTRICT	WITHIN
801	1	2	23	3	41	50	63	7	A	D	
991	1										