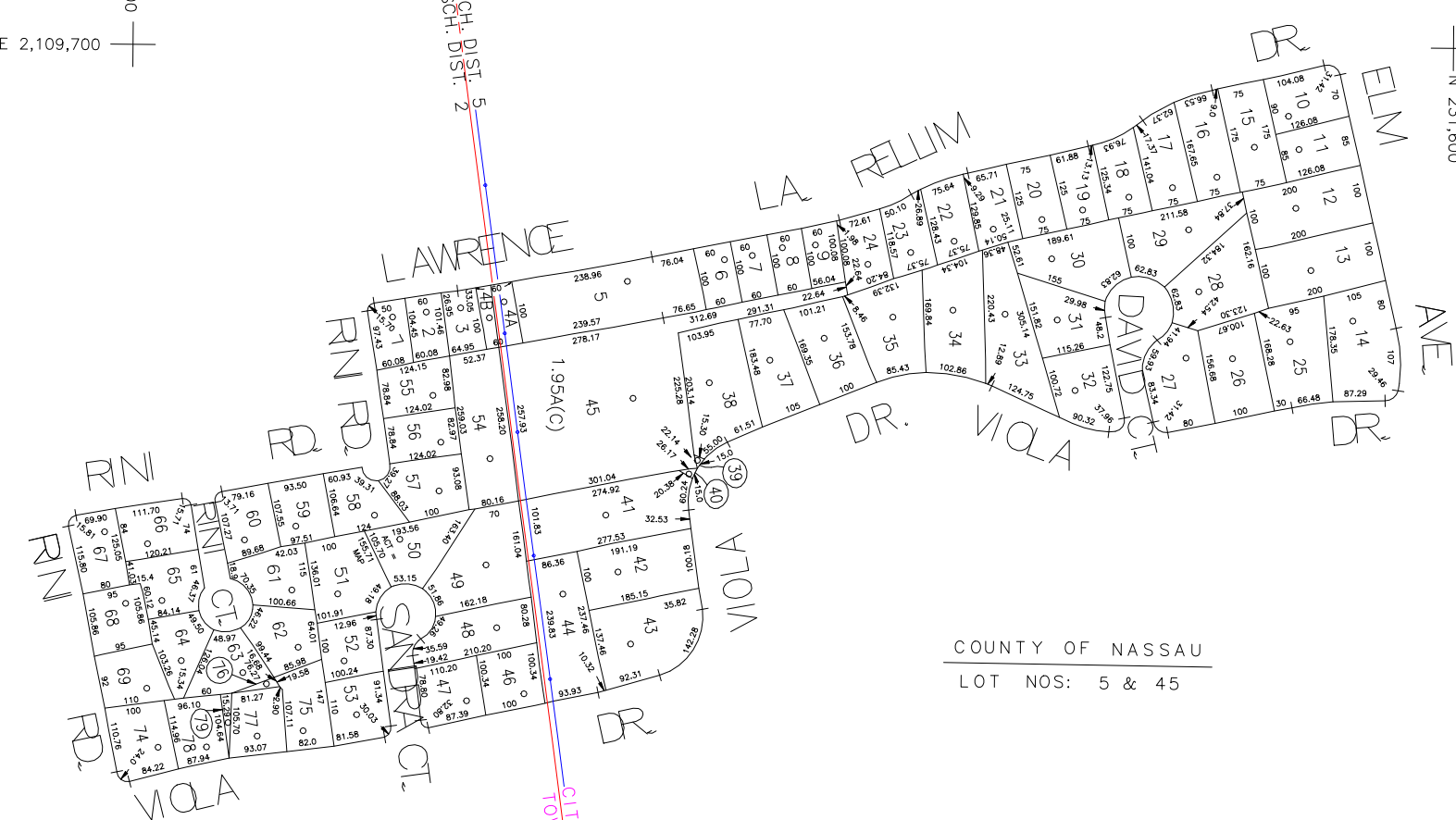




N 229,400
E 2,109,700

N 231,600

E 2,111,100

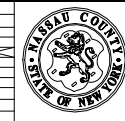


COUNTY OF NASSAU
LOT NOS: 5 & 45

CITY OF GLEN COVE
TOWN OF OYSTER BAY

COPYRIGHT 1981 NASSAU COUNTY

LEGEND					SPECIAL DISTRICTS					MUNICIPALITIES					
COUNTY LINE	---				POLICE	DIST	FIRE PROTECTION	DIST	PUBLIC PARKING	DIST	DRAINAGE	DIST	TOWN OF:		
TOWN LINE	---				County Police	3	Glenwood - Glen Head	41	Town of Oyster Bay - Unincorporated Area	A	Unincorporated Area of District #1	D	HEMPSTEAD		
VILLAGE LINE	---				WATER		SANITARY		SEWER		FIRE HYDRANT RENTAL		NORTH HEMPSTEAD		
SCHOOL DISTRICT LINE	---				Jericho	10	REFUSE & GARBAGE		PARK		GARBAGE		OYSTER BAY		
PROPERTY LINE	---				LIGHTING		REFUSE DISPOSAL		Glenwood - Glen Head	83	ESCALATOR		CITY OF:		
SPECIAL DISTRICT LINE	---				Town of Oyster Bay	23	SEWAGE COLLECTION		IMPROVEMENT		WATER POLLUTION CONTROL		GLEN COVE		
BLOCK LIMIT	---				LIBRARY		TOWN OF OYSTER BAY	85	SIDEWALK				LONG BEACH		
LOCATOR POINT	*				FIRE								VILLAGE OF:		
TAX MAP PARCEL NO.	246														
CALCULATED ACREAGE	754(C)														
DEED ACREAGE	176														
SCALED DIMENSION	327(S)														
DEED DIMENSION	185.89														
REFERENCE MAPS															
MAP NO.															
CODE	SPECIAL DISTRICT WITHIN				CODE	SPECIAL DISTRICT WITHIN				CODE	SPECIAL DISTRICT WITHIN				
819	1	10	2	23	3	41	85	89	89	A	D				
891	1														



Nassau County
Department of Assessment
Harvey B. Levinson, Chairman
Land & Tax Map

SEC. 23
BLK. 37

Map Last Revised: October 7 2004

SHEET 1 OF 1