



N 163,250

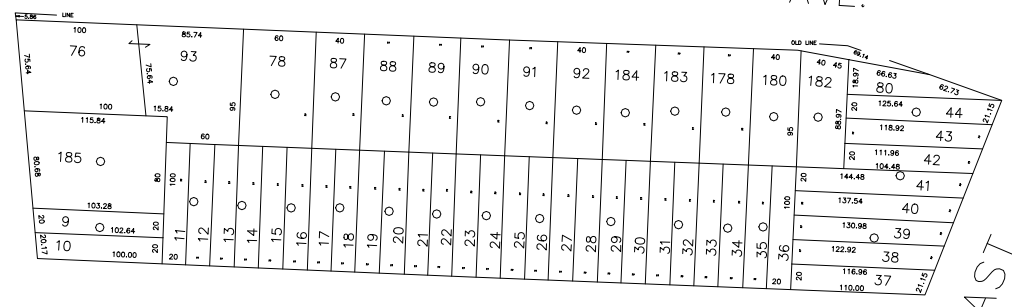
N 162,750
E 2,080,500

CENTRAL AVE.

McKEON

(NOSTRAND AVE.)

AVE.



REMSON

PL.

EAST AVE.



E 2,081,550

R.C. CHURCH OF BLESSED SACRAMENT
LOT NO.76 & 93

COPYRIGHT 1982 NASSAU COUNTY

LEGEND	
COUNTY LINE	---
TOWN LINE	----
VILLAGE LINE	-----
SCHOOL DISTRICT LINE	-----
PROPERTY LINE	-----
SPECIAL DISTRICT LINE	-----
BLOCK LIMIT	-----
LOCATOR POINT	*
TAX MAP PARCEL NO.	246
CALCULATED ACREAGE	754(C)
DEED ACREAGE	176
SCALED DIMENSION	327(S)
DEED DIMENSION	185.89
REFERENCE MAPS	
MAP NO.	

POLICE	
County Police	3
WATER	
LIGHTING	
LIBRARY	
FIRE	A

SPECIAL DISTRICTS	
FIRE PROTECTION	
SANITARY	
REFUSE & GARBAGE	
REFUSE DISPOSAL	
SEWAGE COLLECTION	Sewage Collection District #2-VS
FIRE	A

SPECIAL DISTRICTS	
PUBLIC PARKING	
SEWER	Nassau County Sewage Disposal District #2
PARK	
IMPROVEMENT	
SIDEWALK	

MUNICIPALITIES	
DRAINAGE	
FIRE HYDRANT RENTAL	
GARBAGE	
ESCALATOR	
WATER POLLUTION CONTROL	
Town, County, College, Police HD	1

MUNICIPALITIES	
TOWN OF:	HEMPSTEAD
	NORTH HEMPSTEAD
	OYSTER BAY
CITY OF:	GLEN COVE
	LONG BEACH
VILLAGE OF:	Incorporated Village of Valley Stream
SCHOOL DISTRICT	Valley Stream - 30



Nassau County
Department of Assessment
Harvey B. Levinson, Chairman
Land & Tax Map

Map Last Revised: December 9 2004

SEC. 37
BLK. 175

SHEET 1 OF 1

CODE	SPECIAL	DISTRICT	WITHIN	CODE	SPECIAL	DISTRICT	WITHIN	CODE	SPECIAL	DISTRICT	WITHIN
400	1	1	1	1	1	1	1	202	3	A	