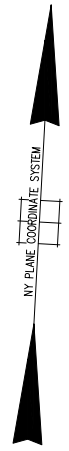
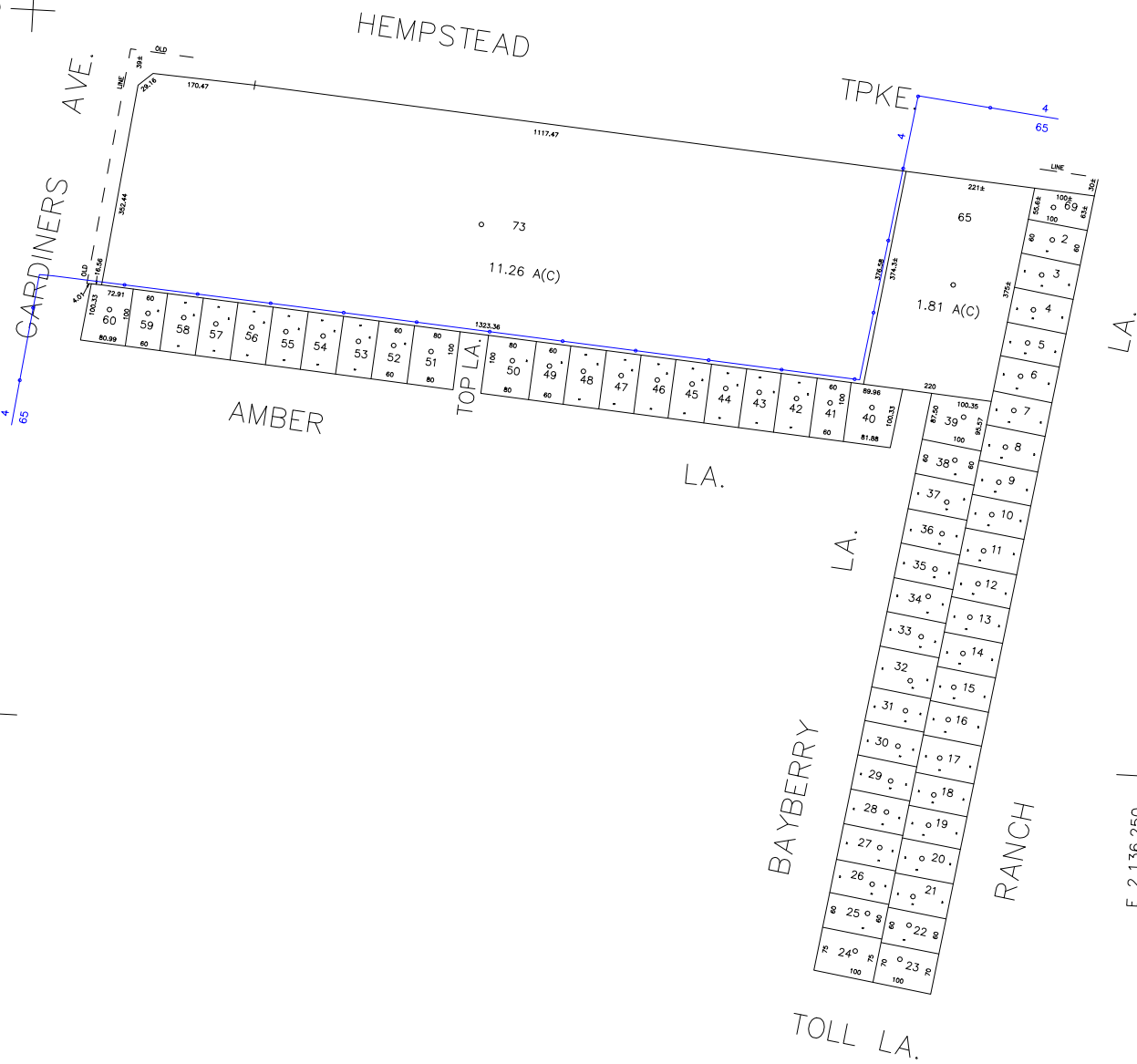


N 182,700

N 181,500

E 2,134,300

E 2,136,250



GOOD SHEPHERD LUTHERAN CHURCH  
LOT NO : 65

COPYRIGHT 1988 NASSAU COUNTY

LEGEND	
COUNTY LINE	---
TOWN LINE	----
VILLAGE LINE	-----
SCHOOL DISTRICT LINE	-----
PROPERTY LINE	-----
SPECIAL DISTRICT LINE	-----
BLOCK LIMIT	-----
LOCATOR POINT	•
TAX MAP PARCEL NO.	*
CALCULATED ACREAGE	246
DEED ACREAGE	754(C)
SCALED DIMENSION	176
DEED DIMENSION	327(S)
	185.89
REFERENCE MAPS	
MAP NO.	


DIST	DIST	DIST	DIST
<b>POLICE</b>	<b>FIRE PROTECTION</b>	<b>PUBLIC PARKING</b>	<b>DRAINAGE</b>
County Police		East End Turntable	
3			
<b>WATER</b>	<b>SANITARY</b>	<b>SEWER</b>	<b>FIRE HYDRANT RENTAL</b>
Levittown		Nassau County Sewerage Disposal District #3	
128			
<b>LIGHTING</b>	<b>REFUSE &amp; GARBAGE</b>	<b>PARK</b>	<b>GARBAGE</b>
Town of Hempstead	Town of Hempstead	Levittown	
L			
<b>LIBRARY</b>	<b>REFUSE DISPOSAL</b>	<b>IMPROVEMENT</b>	<b>ESCALATOR</b>
47	Town of Hempstead	Hempstead - Oyster Bay (J.K.) Community Hall / Swimming Pool	
	X		
<b>FIRE</b>	<b>SEWAGE COLLECTION</b>	<b>SIDEWALK</b>	<b>WATER POLLUTION CONTROL</b>
Levittown	Sewage Collection District #3-L		Town, County, College, Police HQ
112	19		Town Building Dept. Zoning & Appeal, Unincorporated Area
			1
			2

SPECIAL DISTRICTS	
CODE	DISTRICT
004	1
005	1

MUNICIPALITIES	
TOWN OF:	
HEMPSTEAD	
NORTH HEMPSTEAD	
OYSTER BAY	
CITY OF:	
GLEN COVE	
LONG BEACH	
VILLAGE OF:	
SCHOOL DISTRICT	
Levittown	5

SPECIAL DISTRICTS	
CODE	DISTRICT

SPECIAL DISTRICTS	
CODE	DISTRICT



**Nassau County**  
**Department of Assessment**  
Harvey B. Levinson, Chairman  
**Land & Tax Map**

Map Last Revised: December 22 2004

**SEC. 51**  
**BLK. 222**

**SHEET 1 OF 1**

CODE	SPECIAL	DISTRICT	WITHIN	CODE	SPECIAL	DISTRICT	WITHIN	CODE	SPECIAL	DISTRICT	WITHIN
004	1	112	118	125	19	2	3	39	47	68	L P X
005	1	112	118	125	19	2	3	39	47	L P X	