

N 190,200
E 2,109,000

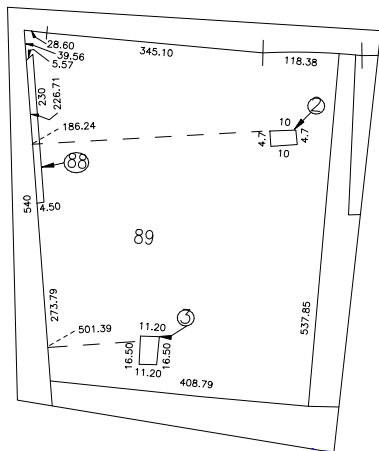
OLD COUNTRY RD.

RD.

TOWN OF NORTH HEMPSTEAD

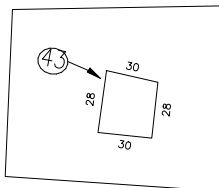
TOWN OF HEMPSTEAD
SCHOOL DIST. 3

TOWN OF NORTH HEMPSTEAD
TOWN OF HEMPSTEAD
SCHOOL DIST. 2

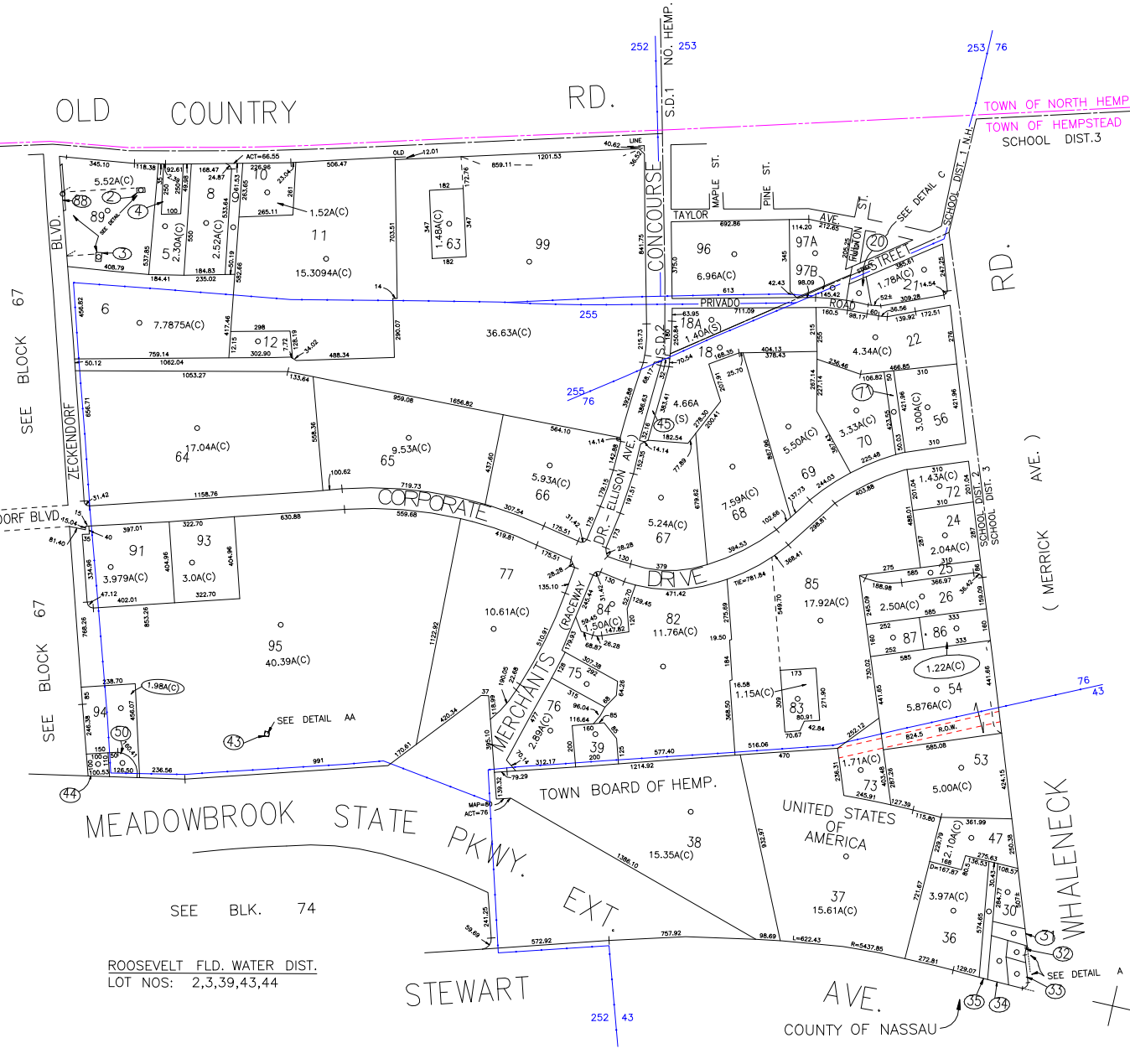


DETAIL SCALE 1" = 150'

N 186,600



DETAIL SCALE 1" = 40'



MEADOWBROOK STATE PKWY. EXT.

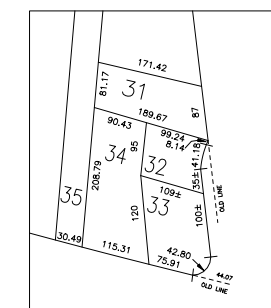
SEE BLK. 74

ROOSEVELT FLD. WATER DIST.
LOT NOS: 2,3,39,43,44

STEWART AVE.

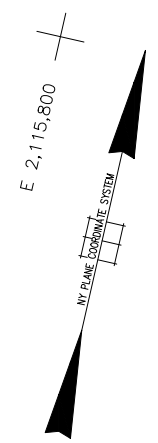
UNION STATE AVENUE
COUNTY OF NASSAU

WHALENECK (MERRICK AVE.)



DETAIL SCALE 1" = 150'

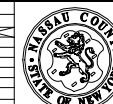
FMLY PART OF BLK. A



COPYRIGHT 1982 NASSAU COUNTY

LEGEND										SPECIAL DISTRICTS										MUNICIPALITIES									
COUNTY LINE	---									POLICE										TOWN OF HEMPSTEAD									
TOWN LINE	---									County Police										UNDUNED									
VILLAGE LINE	---									3										NORTH HEMPSTEAD									
SCHOOL DISTRICT LINE	---									WATER										OSTER BAY									
PROPERTY LINE	---									Roosevelt Field										CITY OF GLEN COVE									
SPECIAL DISTRICT LINE	---									63										LONG BEACH									
BLOCK LIMIT	---									SEWER										VILLAGE OF:									
LOCATOR POINT	---									66																			
TAX MAP PARCEL NO.	---									NASSAU COUNTY SEWAGE DISPOSAL DISTRICT #3																			
CALCULATED ACREAGE	---									L																			
DEED ACREAGE	---									PARK																			
SCALED DIMENSION	---									Town of Hempstead																			
DEED DIMENSION	---									Town of Hempstead																			
REFERENCE MAPS	---									REFUSE DISPOSAL																			
MAP NO.	---									Town of Hempstead																			
	---									SEWAGE COLLECTION																			
	---									Sewage Collection District #3-CP-W																			
	---									Sewage Collection District #3-RU																			
	---									FIRE																			
	---									UNDUNED																			
	---									F																			
	---									SPECIAL DISTRICTS																			
	---									UNDUNED																			
	---									38																			
	---									SEWER																			
	---									NASSAU COUNTY SEWAGE DISPOSAL DISTRICT #3																			
	---									30																			
	---									PARK																			
	---									Town of Hempstead																			
	---									V																			
	---									IMPROVEMENT																			
	---									UNDUNED																			
	---									1																			
	---									TOWN, COUNTY, COLLEGE, POLICE HQ																			
	---									2																			
	---									TOWN BUILDING DEPT. ZONING & APPEAL, UNINCORPORATED AREA																			
	---									1																			
	---									UNDUNED																			
	---									2																			
	---									WHEELBURY																			
	---									NH-1																			
	---									SPECIAL DISTRICTS																			
	---									UNDUNED																			
	---									3																			
	---									SEWER																			
	---									NASSAU COUNTY SEWAGE DISPOSAL DISTRICT #3																			
	---									30																			
	---									PARK																			
	---									Town of Hempstead																			
	---									V																			
	---									IMPROVEMENT																			
	---									UNDUNED																			
	---									1																			
	---									TOWN, COUNTY, COLLEGE, POLICE HQ																			
	---									2																			
	---									TOWN BUILDING DEPT. ZONING & APPEAL, UNINCORPORATED AREA																			
	---									1																			
	---									UNDUNED																			
	---									2																			
	---									WHEELBURY																			
	---									NH-1																			

Nassau County
Department of Assessment
Harvey B. Levinson, Chairman
Land & Tax Map



Map Last Revised: January 6 2005

SEC. 44
BLK. 78

SHEET 1 OF 1