

N 228,200

N 227,200

N 227,000

N 227,650

N 227,350



N 226,200

N 227,600

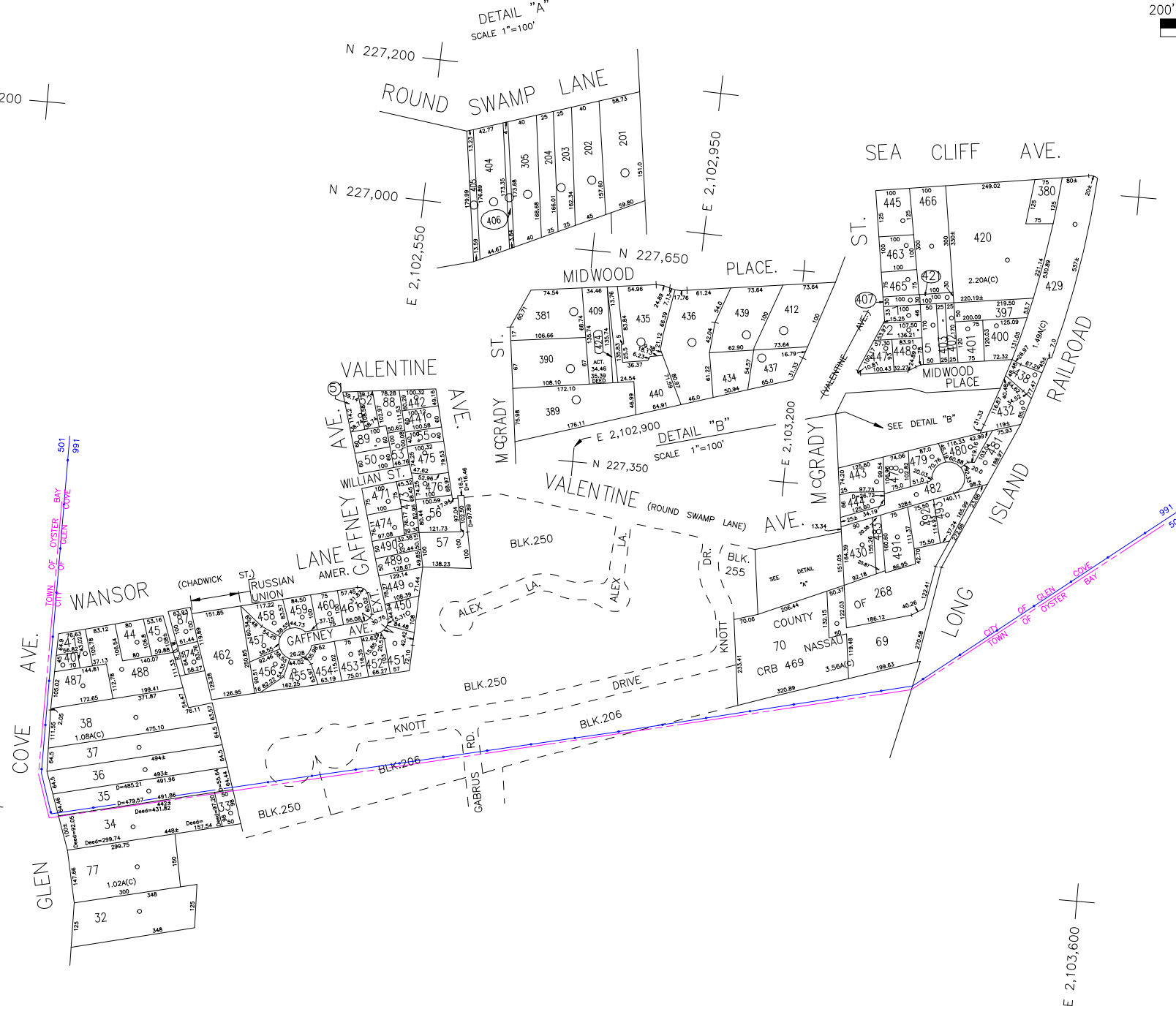
E 2,102,550

E 2,100,500

E 2,102,950

E 2,103,200

E 2,103,600



LEGEND

COUNTY LINE	---
TOWN LINE	---
VILLAGE LINE	---
SCHOOL DISTRICT LINE	---
PROPERTY LINE	---
SPECIAL DISTRICT LINE	---
BLOCK LIMIT	---
LOCATOR POINT	*
TAX MAP PARCEL NO.	246
CALCULATED ACREAGE	754(C)
DEED ACREAGE	176
SCALED DIMENSION	327(S)
DEED DIMENSION	185.69

POLICE

DIST	WITHIN
3	A, D

WATER

DIST	WITHIN
7	A, D

LIGHTING

DIST	WITHIN
23	A, D

LIBRARY

DIST	WITHIN

FIRE

DIST	WITHIN

FIRE PROTECTION

DIST	WITHIN
41	A

SANITARY

DIST	WITHIN

REFUSE & GARBAGE

DIST	WITHIN

REFUSE DISPOSAL

DIST	WITHIN

SEWAGE COLLECTION

DIST	WITHIN

PUBLIC PARKING

DIST	WITHIN
A	A

SEWER

DIST	WITHIN

PARK

DIST	WITHIN
63	A

IMPROVEMENT

DIST	WITHIN

SIDEWALK

DIST	WITHIN

DRAINAGE

DIST	WITHIN
D	D

FIRE HYDRANT RENTAL

DIST	WITHIN

GARBAGE

DIST	WITHIN
50	A

ESCALATOR

DIST	WITHIN

WATER POLLUTION CONTROL

DIST	WITHIN
1	A
2	D

MUNICIPALITIES

DIST	WITHIN
1	A
6	D



Nassau County
Department of Assessment
 Harvey B. Levinson, Chairman
Land & Tax Map

Map Last Revised: January 21 2005

SEC. 21
BLK. N-1

SHEET 1 OF 1

CODE	SPECIAL	DISTRICT	WITHIN	CODE	SPECIAL	DISTRICT	WITHIN	CODE	SPECIAL	DISTRICT	WITHIN
801	1	2	23	3	41	50	63	7	A	D	
991	1										