

N 189,000

SCHOOL

(POWELL AVE.)

ST.

BROADWAY

STATE OF NEW YORK  
 LOT NOS: 260,632,634,636,  
 642,670,671,674,  
 682 & 683.

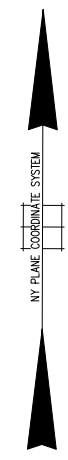
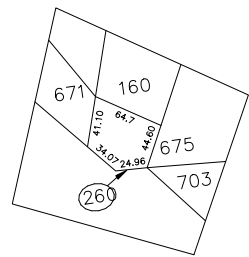
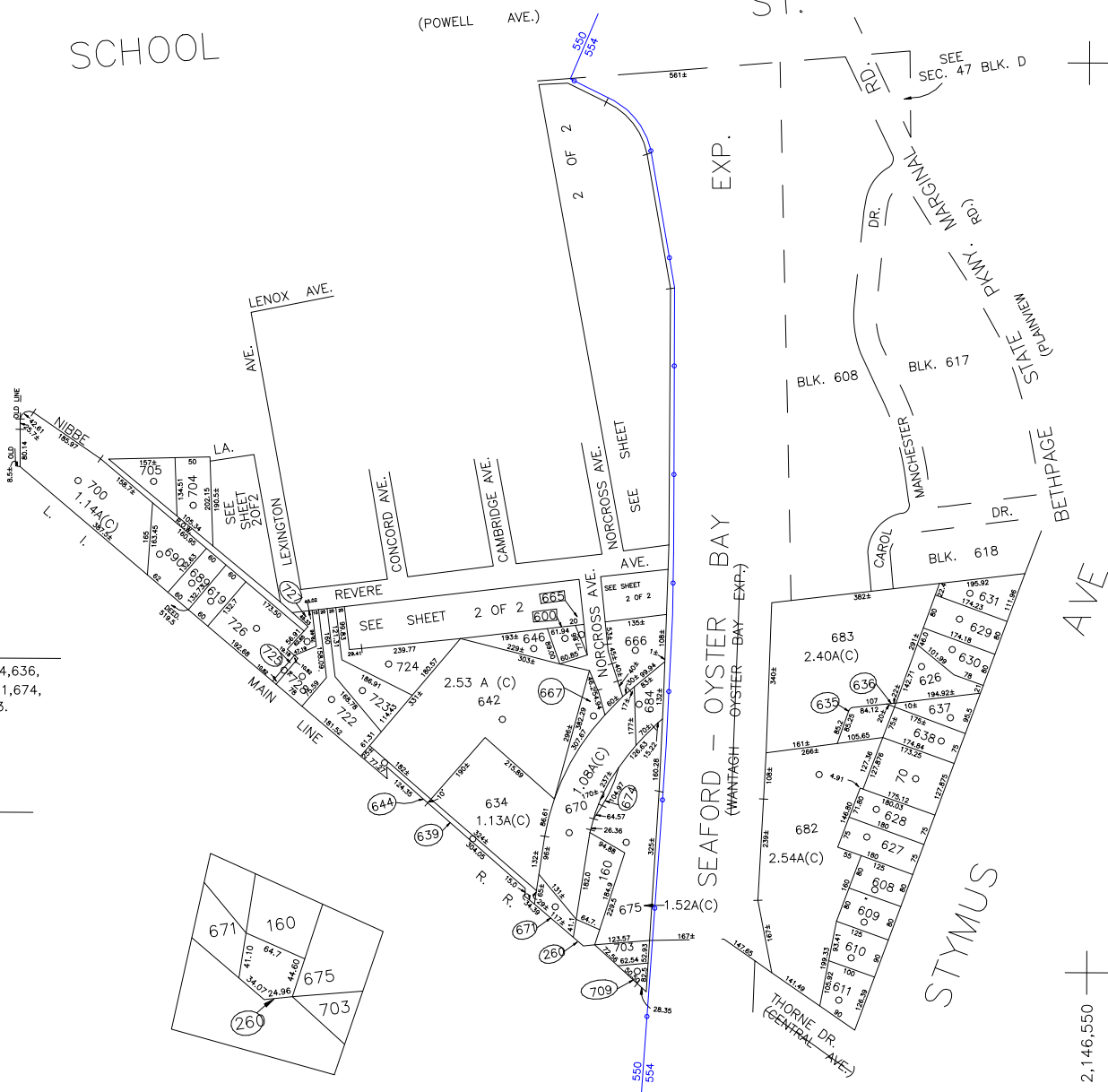
CEMENTERY.  
 LOT NO: 600

COUNTY OF NASSAU  
 LOT NO: 684

N 186,900

E 2,143,950

DETAIL SCALE 1" = 80'



COPYRIGHT 1988 NASSAU COUNTY

LEGEND	
COUNTY LINE	---
TOWN LINE	---
VILLAGE LINE	---
SCHOOL DISTRICT LINE	---
PROPERTY LINE	---
SPECIAL DISTRICT LINE	---
BLOCK LIMIT	---
LOCATOR POINT	*
TAX MAP PARCEL NO.	246
CALCULATED ACREAGE	754(C)
DEED ACREAGE	174
SCALED DIMENSION	327(S)
DEED DIMENSION	185.89
REFERENCE MAPS	
MAP NO.	

POLICE	
Country Police	3
Town of Oyster Bay - Unincorporated Area	A
WATER	
Bethpage Est. (Ch)	6
LIGHTING	
Town of Oyster Bay	23
LIBRARY	
FIRE	
Bethpage	31

FIRE PROTECTION	
SANITARY	
REFUSE & GARBAGE	
REFUSE DISPOSAL	
SEWAGE COLLECTION	
Sewage Collection District #3-F	21
Sewage Collection District #3-P	28
Town of Oyster Bay	65

SPECIAL DISTRICTS	
PUBLIC PARKING	
Town of Oyster Bay - Unincorporated Area	A
SEWER	
Nassau County Sewage Disposal District #3	30
PARK	
Bethpage	62
IMPROVEMENT	
SIDEWALK	

DRAINAGE	
Unincorporated Area of District #1	D
FIRE HYDRANT RENTAL	
GARBAGE	
Garbage District #1	93
ESCALATOR	
WATER POLLUTION CONTROL	
Town, County, College, Police HQ	1
Town Highway	2

MUNICIPALITIES	
TOWN OF: HEMPSTEAD	
NORTH HEMPSTEAD	
OYSTER BAY	
CITY OF: GLEN COVE	
LONG BEACH	
VILLAGE OF:	
SCHOOL DISTRICT	
Bethpage	21



**Nassau County**  
**Department of Assessment**  
 Harvey B. Levinson, Chairman  
**Land & Tax Map**

Map Last Revised: February 28 2005

**SEC. 46**  
**BLK. E**

**SHEET 1 OF 2**

CODE	SPECIAL	DISTRICT	WITHIN	CODE	SPECIAL	DISTRICT	WITHIN	CODE	SPECIAL	DISTRICT	WITHIN		
650	1	2	23	26	3	31	39	65	6	62	93	A	D
654	1	2	21	29	3	31	39	65	6	62	93	A	D