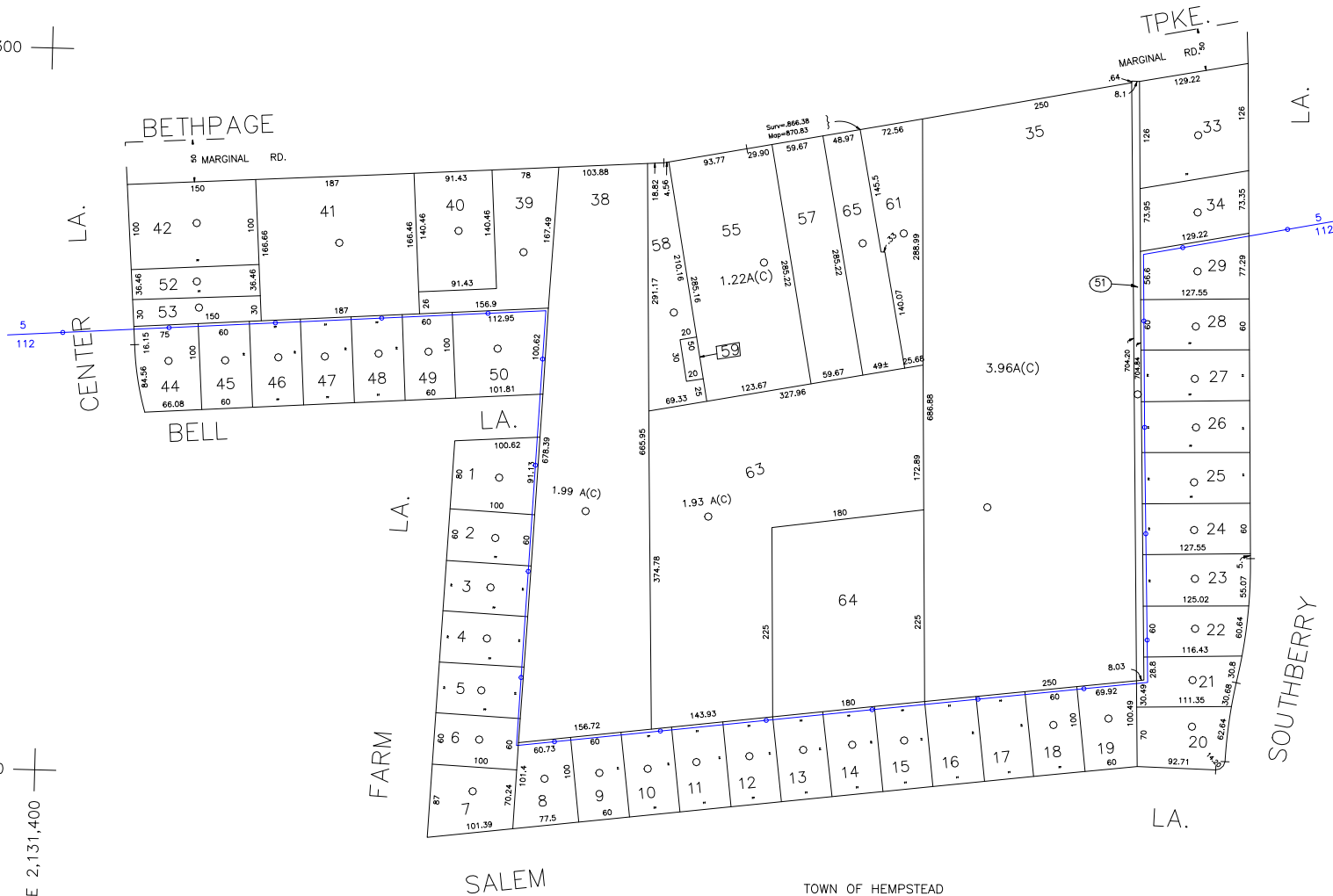


N 182,300

N 181,450

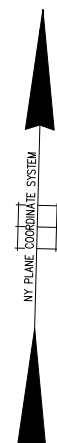
E 2,131,400

E 2,133,050



TOWN OF HEMPSTEAD  
LOT NOS: 34,39,58 & 63.

R.C. CHURCH OF ST. BERNARD  
LOT NOS: 16,17,35 & 64.



COPYRIGHT 1988 NASSAU COUNTY

LEGEND	
COUNTY LINE	---
TOWN LINE	----
VILLAGE LINE	-----
SCHOOL DISTRICT LINE	-----
PROPERTY LINE	-----
SPECIAL DISTRICT LINE	-----
BLOCK LIMIT	-----
LOCATOR POINT	*
TAX MAP PARCEL NO.	246
CALCULATED ACREAGE	794(C)
DEED ACREAGE	176
SCALED DIMENSION	327(S)
DEED DIMENSION	185.89
REFERENCE MAPS	
MAP NO.	

POLICE	
County Police	DIST 3
Levittown	DIST 128
LIGHTING	
Town of Hempstead	DIST 47
LIBRARY	
Levittown	DIST 112

FIRE PROTECTION	
SANITARY	DIST 68
REFUSE & GARBAGE	
Town of Hempstead	DIST L
REFUSE DISPOSAL	
Town of Hempstead	DIST X
SEWAGE COLLECTION	
Sewage Collection District #3-H	DIST 18

SPECIAL DISTRICTS	
PUBLIC PARKING	DIST 68
East End Turnpike	
SEWER	
Nassau County Sewage Disposal District #3	DIST 39
PARK	
Hempstead - Oyster Bay (H.) Community Hall / Swimming Pool	DIST 118
Levittown	
IMPROVEMENT	
SIDEWALK	

DRAINAGE	
FIRE HYDRANT RENTAL	
GARBAGE	
ESCALATOR	
WATER POLLUTION CONTROL	
Town, County, College, Police HD	DIST 1
Town Building Dept, Zoning & Appeals, Unincorporated Area	DIST 2

MUNICIPALITIES	
TOWN OF: HEMPSTEAD	
NORTH HEMPSTEAD	
OYSTER BAY	
CITY OF: GLEN COVE	
LONG BEACH	
VILLAGE OF:	
SCHOOL DISTRICT	
Levittown	DIST 5



**Nassau County**  
**Department of Assessment**  
Harvey B. Levinson, Chairman  
**Land & Tax Map**

Map Last Revised: July 24 2002

**SEC. 51**  
**BLK. 111**

**SHEET 1 OF 1**

CODE	SPECIAL	DISTRICT	WITHIN	CODE	SPECIAL	DISTRICT	WITHIN	CODE	SPECIAL	DISTRICT	WITHIN
005	1	112	118	128	18	2	3	39	47	68	L P X
112	1	112	118	128	18	2	3	39	47	L P X	