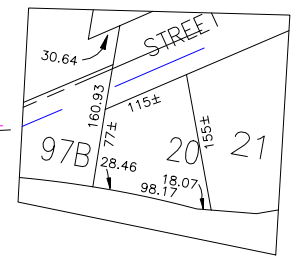


N 190,200  
E 2,109,000

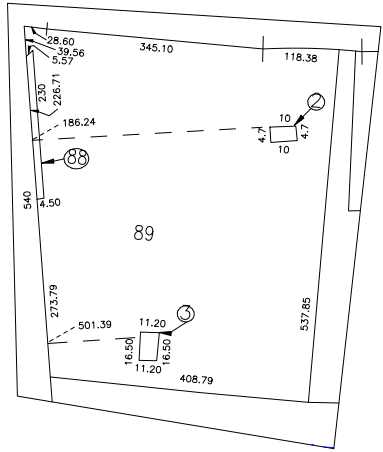
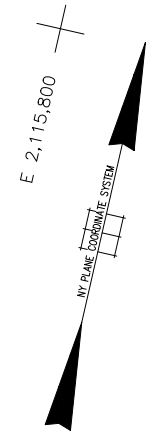
OLD COUNTRY RD.

TOWN OF NORTH HEMPSTEAD  
TOWN OF HEMPSTEAD  
SCHOOL DIST. 2

TOWN OF NORTH HEMPSTEAD  
TOWN OF HEMPSTEAD  
SCHOOL DIST. 3

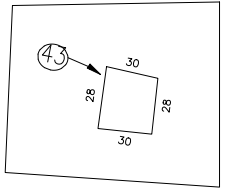


DETAIL 'C' SCALE 1" = 100'

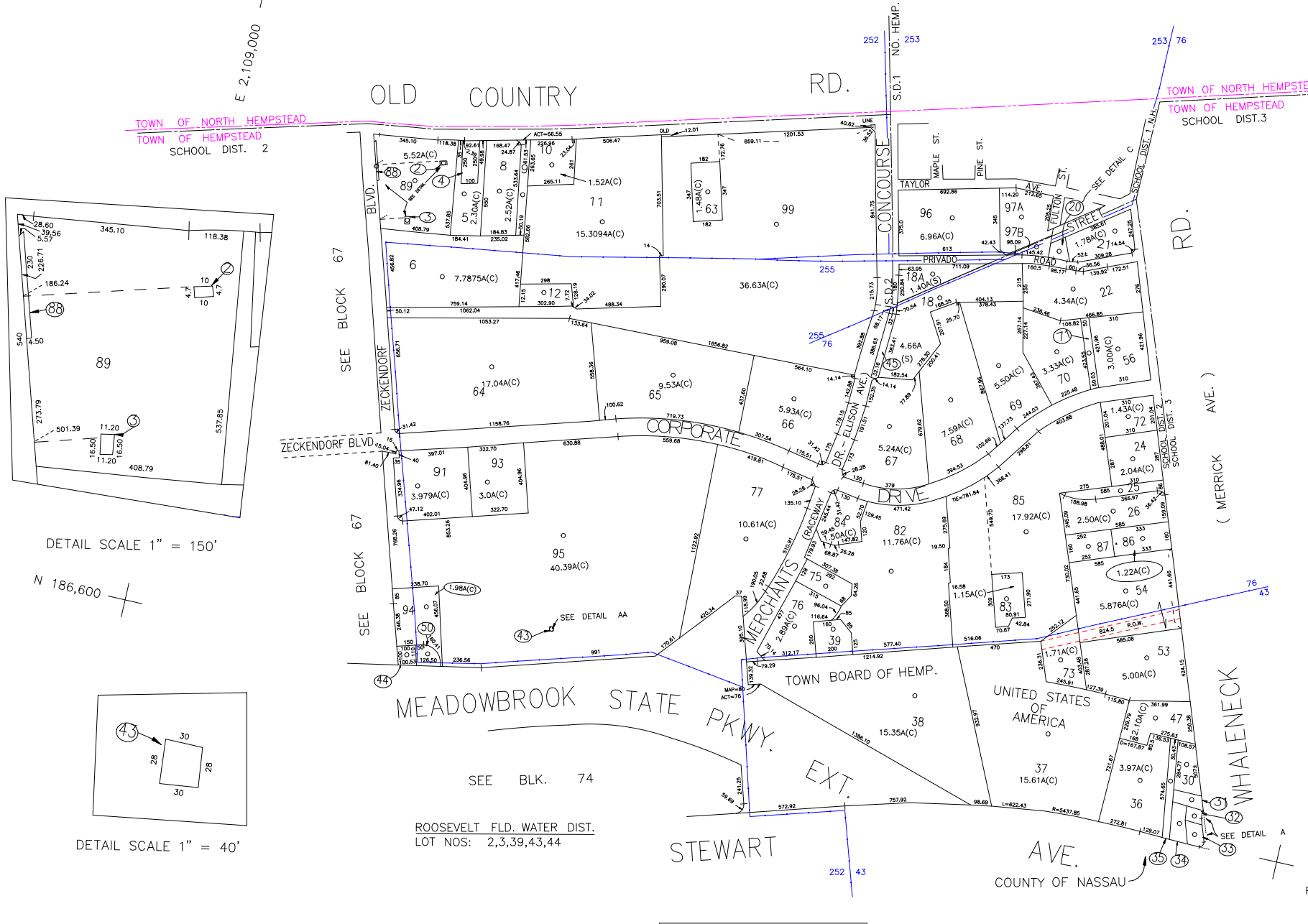


DETAIL SCALE 1" = 150'

N 186,600



DETAIL SCALE 1" = 40'



COPYRIGHT 1982 NASSAU COUNTY

LEGEND	
COUNTY LINE	---
TOWN LINE	---
VILLAGE LINE	---
SCHOOL DISTRICT LINE	---
PROPERTY LINE	---
SPECIAL DISTRICT LINE	---
BLOCK LIMIT	---
LOCATOR POINT	○
TAX MAP PARCEL NO.	*
CALCULATED ACREAGE	794(C)
DEED ACREAGE	1764
SCALED DIMENSION	327(S)
DEED DIMENSION	185.09
REFERENCE MAPS	
MAP NO.	

POLICE	
County Police	3
Water	25
Roosevelt Field	25
Lighting	47
Library	36
Fire	

FIRE PROTECTION	
Hempstead Plains	108
Waterside City	63
Roosevelt Field	66
Garbage	66
Refuse Disposal	X
Sewage Collection	62
Sewage Collection District #3-CP-W	62
Sewage Collection District #3-RU	F

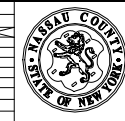
SPECIAL DISTRICTS	
Public Parking	38
Sewer	38
Park	V
Improvement	
Sidewalk	

MUNICIPALITIES	
Escalator	
Water Pollution Control	
Town, County, College, Police HQ	1
Town Building Dept, Zoning & Appeal, Unincorporated Area	2

TOWN OF HEMPSTEAD	
City of Oyster Bay	
City of Glen Cove	
City of Long Beach	
Village of...	
School District	
Undated	2
Westbury	NH-1

CODE	SPECIAL	DISTRICT	WITHIN	CODE	SPECIAL	DISTRICT	WITHIN
049	1	108	2 25 3 36 36 39 47 82 L V X	255	1	2 25 3 39 47 82 89 L V X	
076	1	2 25 3 36 36 39 47 82 88 L V X					
282	1	2 25 3 36 36 39 47 88 F L V X					
283	1	2 25 3 36 47 82 88 L V X					

**Nassau County**  
**Department of Assessment**  
Harvey B. Levinson, Chairman  
**Land & Tax Map**



Map Last Revised: March 9 2008

**SEC. 44**  
**BLK. 78**

**SHEET 1 OF 1**