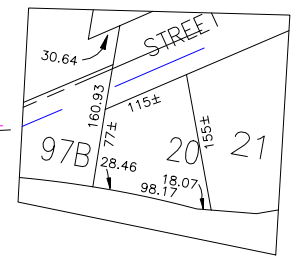


N 190,200
E 2,109,000

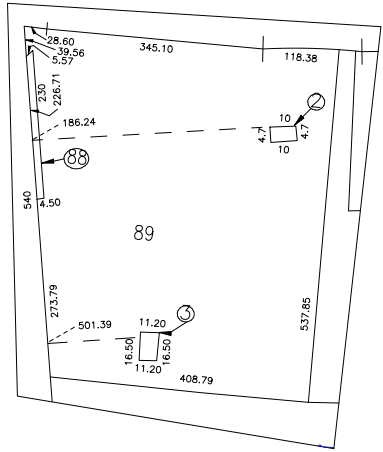
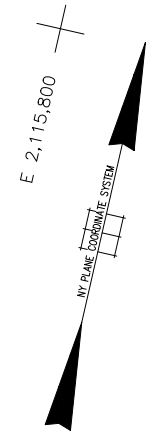
OLD COUNTRY RD.

TOWN OF NORTH HEMPSTEAD
TOWN OF HEMPSTEAD
SCHOOL DIST. 2

TOWN OF NORTH HEMPSTEAD
TOWN OF HEMPSTEAD
SCHOOL DIST. 3

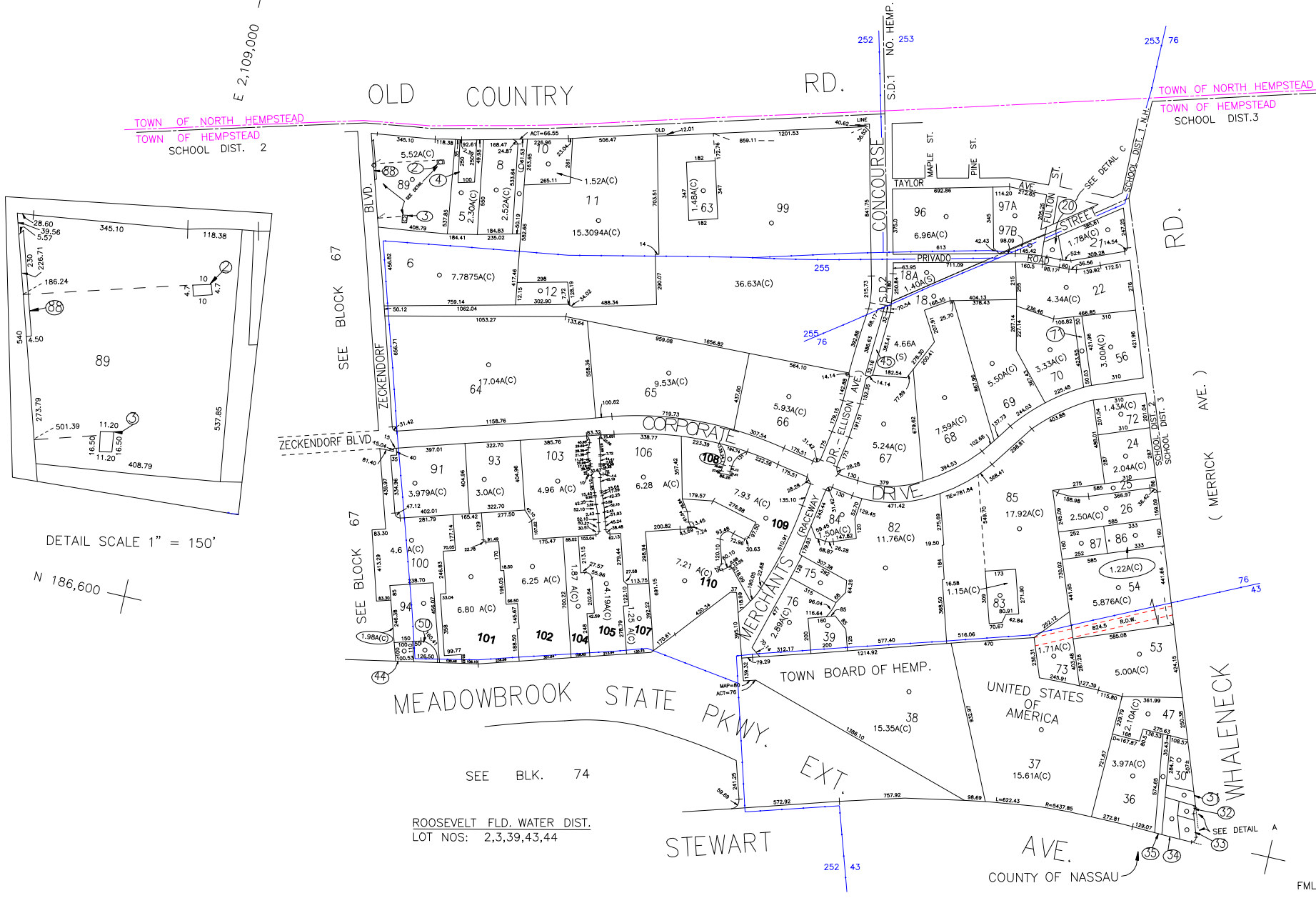


DETAIL 'C' SCALE 1" = 100'

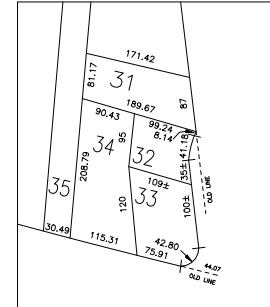


DETAIL SCALE 1" = 150'

N 186,600



ROOSEVELT FLD. WATER DIST.
LOT NOS: 2,3,39,43,44



DETAIL SCALE 1" = 150'

FMLY PART OF BLK. A

LEGEND	
COUNTY LINE	---
TOWN LINE	---
VILLAGE LINE	---
SCHOOL DISTRICT LINE	---
PROPERTY LINE	---
SPECIAL DISTRICT LINE	---
BLOCK LIMIT	---
LOCATOR POINT	*
TAX MAP PARCEL NO.	246
CALCULATED ACREAGE	754(C)
DEED ACREAGE	176
SCALED DIMENSION	327(S)
DEED DIMENSION	185.09
REFERENCE MAPS	
MAP NO.	

POLICE	
County Police	3
WATER	
Roosevelt Field	25
LIGHTING	
Town of Hempstead	47
LIBRARY	
Uniondale	36
FIRE	

FIRE PROTECTION	
Hempstead Plains	108
Garfield City	63
SEWER & GARBAGE	
Town of Hempstead	66
L	
REFUSE DISPOSAL	
Town of Hempstead	X
SEWAGE COLLECTION	
Sewage Collection District #3-CP-W	62
Sewage Collection District #3-RUA	F

SPECIAL DISTRICTS	
PUBLIC PARKING	
Uniondale	38
SEWER	
Nassau County Sewage Disposal District #3	39
PARK	
Town of Hempstead	V
IMPROVEMENT	
SIDEWALK	

MUNICIPALITIES	
TOWN OF HEMPSTEAD	
NORTH HEMPSTEAD	
OYSTER BAY	
CITY OF GLEN COVE	
LONG BEACH	
VILLAGE OF:	
SCHOOL DISTRICT	
Uniondale	2
Westbury	NH-1

DRAINAGE	
FIRE HYDRANT RENTAL	
GARBAGE	
ESCALATOR	
WATER POLLUTION CONTROL	
Town, County, College, Police HQ	1
Town Building Dept. Zoning & Appeal, Unincorporated Area	2



Nassau County
Department of Assessment
Harvey B. Levinson, Chairman
Land & Tax Map

Map Last Revised: April 13 2006

SEC. 44
BLK. 78

SHEET 1 OF 1

CODE	SPECIAL	DISTRICT	WITHIN
049	1 108 2 25 3 36 36 39 47 62	L V X	
076	1 2 25 3 36 36 39 47 62 66	L V X	
282	1 2 25 3 36 36 39 47 66	F L V X	
283	1 2 25 3 36 47 62 66	L V X	