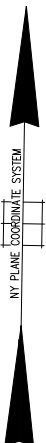
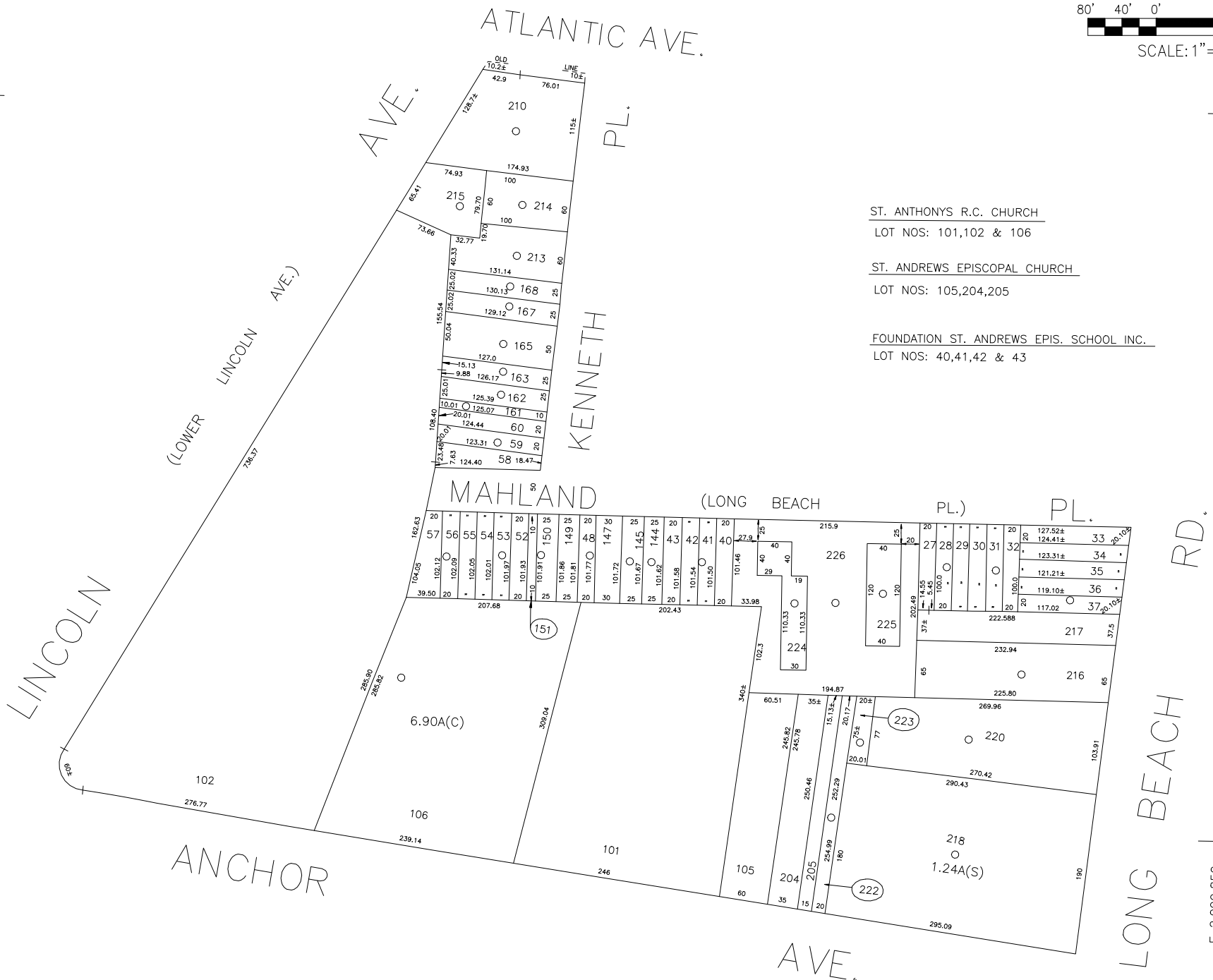


N 150,850



N 150,000  
E 2,098,400



ST. ANTHONYS R.C. CHURCH  
LOT NOS: 101,102 & 106

ST. ANDREWS EPISCOPAL CHURCH  
LOT NOS: 105,204,205

FOUNDATION ST. ANDREWS EPIS. SCHOOL INC.  
LOT NOS: 40,41,42 & 43

COPYRIGHT 1988 NASSAU COUNTY

**LEGEND**

COUNTY LINE	---
TOWN LINE	---
VILLAGE LINE	---
SCHOOL DISTRICT LINE	---
PROPERTY LINE	---
SPECIAL DISTRICT LINE	---
BLOCK LIMIT	---
LOCATOR POINT	*
TAX MAP PARCEL NO.	246
CALCULATED ACREAGE	794(C)
DEED ACREAGE	174
SCALED DIMENSION	327(S)
DEED DIMENSION	185.89
REFERENCE MAPS	
MAP NO.	

<b>POLICE</b>	DIST
County Police	3
<b>WATER</b>	
Oceanside	
<b>LIGHTING</b>	
Town of Hempstead	47
<b>LIBRARY</b>	
Oceanside	73

<b>FIRE PROTECTION</b>	DIST
SANITARY	
Sanitary District 7	94
REFUSE & GARBAGE	
REFUSE DISPOSAL	
Town of Hempstead	X
SEWAGE COLLECTION	
Sewage Collection District #2-IPO	K

<b>PUBLIC PARKING</b>	DIST
Oceanside	Y
<b>SEWER</b>	
Nassau County Sewage Disposal District #2	202
<b>PARK</b>	
Town of Hempstead	V
<b>IMPROVEMENT</b>	
SIDEWALK	

<b>DRAINAGE</b>	DIST
<b>FIRE HYDRANT RENTAL</b>	
<b>GARBAGE</b>	
<b>ESCALATOR</b>	
<b>WATER POLLUTION CONTROL</b>	
Town, County, College, Police HQ	1
Town Building Dept. Zoning & Appeal, Unincorporated Area	2

<b>MUNICIPALITIES</b>	
TOWN OF: HEMPSTEAD	
NORTH HEMPSTEAD	
OYSTER BAY	
CITY OF: GLEN COVE	
LONG BEACH	
VILLAGE OF:	
<b>SCHOOL DISTRICT</b>	
Oceanside	11



**Nassau County**  
**Department of Assessment**  
Harvey B. Levinson, Chairman  
**Land & Tax Map**

Map Last Revised: May 8 2007

**SEC. 43**  
**BLK. 376**

**SHEET 1 OF 1**

CODE	SPECIAL	DISTRICT	WITHIN	CODE	SPECIAL	DISTRICT	WITHIN	CODE	SPECIAL	DISTRICT	WITHIN
129	1	2	202	3	47	73	94	K	V	X	Y