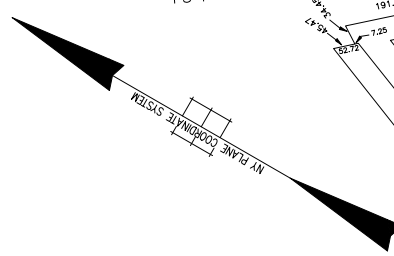
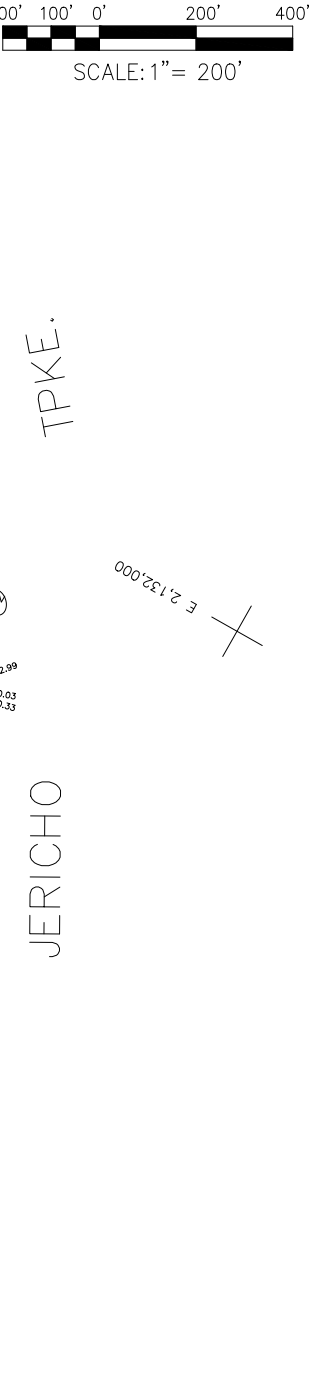
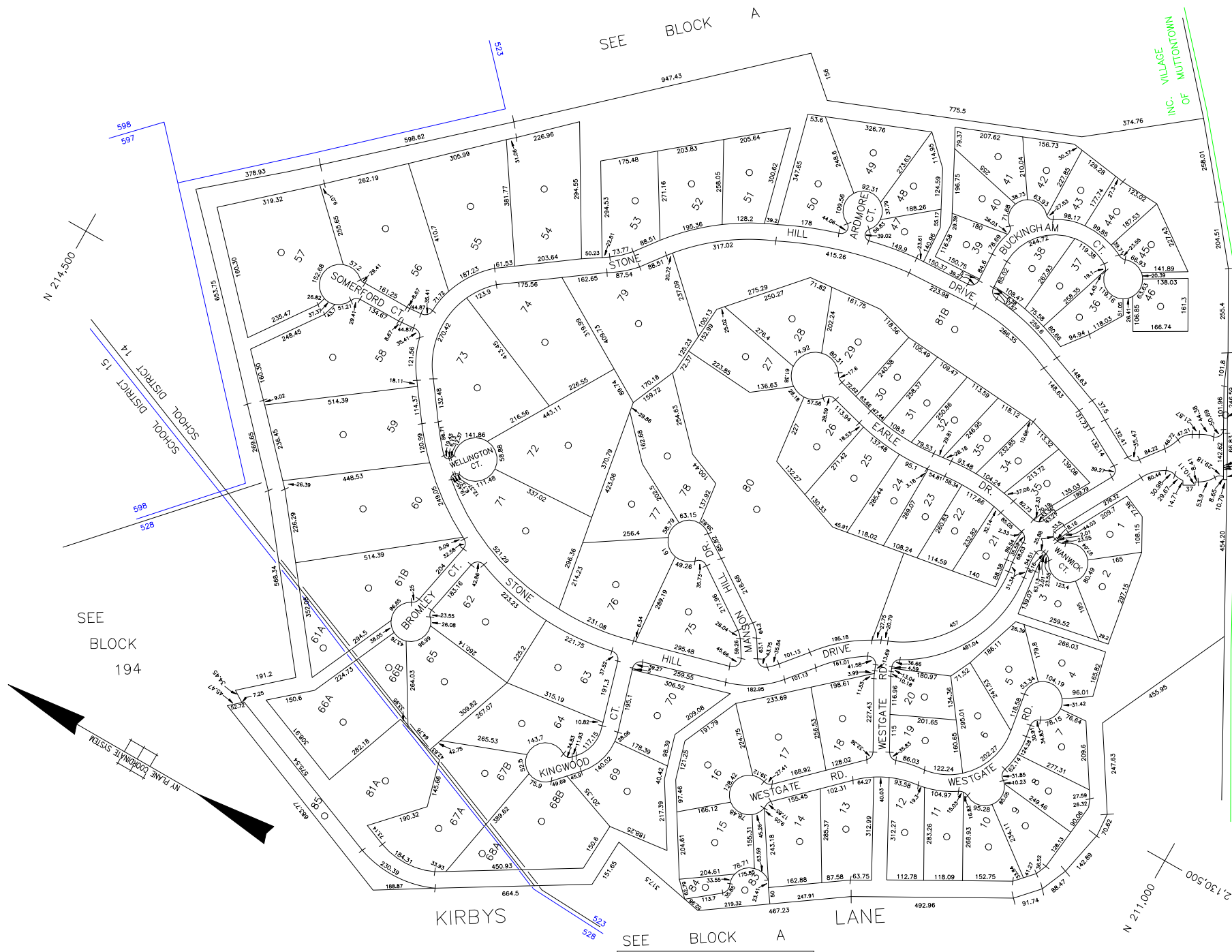


COPYRIGHT 1989 NASSAU COUNTY



**LEGEND**

COUNTY LINE	---
TOWN LINE	---
VILLAGE LINE	---
SCHOOL DISTRICT LINE	---
PROPERTY LINE	---
SPECIAL DISTRICT LINE	---
BLOCK LIMIT	---
LOCATOR POINT	*
TAX MAP PARCEL NO.	246
CALCULATED ACREAGE	754(C)
DEED ACREAGE	174
SCALED DIMENSION	327(S)
DEED DIMENSION	185.69
REFERENCE MAPS	
MAP NO.	

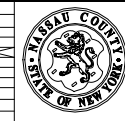
DIST	
POLICE	
Jericho	
LIBRARY	
Jericho	34
Syosset	38

DIST	
FIRE PROTECTION	
SANITARY	
REFUSE & GARBAGE	
REFUSE DISPOSAL	
SEWAGE COLLECTION	

SPECIAL DISTRICTS		DIST
PUBLIC PARKING		
SEWER	Nassau County Sewage Disposal District #3	39
PARK		
IMPROVEMENT		
SIDEWALK		

DIST	
DRAINAGE	Portion of Drainage District #1 in Muttontown
FIRE HYDRANT RENTAL	
GARBAGE	
ESCALATOR	
WATER POLLUTION CONTROL	Town, County, College, Police HQ
	1

MUNICIPALITIES	
TOWN OF:	HEMPSTEAD
	NORTH HEMPSTEAD
	OYSTER BAY
	CITY OF GLEN COVE
	LONG BEACH
	VILLAGE OF:
	Incorporated Village of Muttontown
SCHOOL DISTRICT	
Locust Grove	14
Jericho	15



**Nassau County**  
**Department of Assessment**  
*Harvey B. Levinson, Chairman*  
**Land & Tax Map**  
 Map Last Revised: January 28 2008

**SEC. 15**  
**BLK. 206**  
**SHEET 1 OF 1**

CODE	SPECIAL	DISTRICT	WITHIN	CODE	SPECIAL	DISTRICT	WITHIN	CODE	SPECIAL	DISTRICT	WITHIN
529	1	10	38	39							
529	1	10	34	39	DM						
597	1	10	38	39	DM						
598	1	10	34	39	DM						