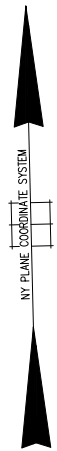


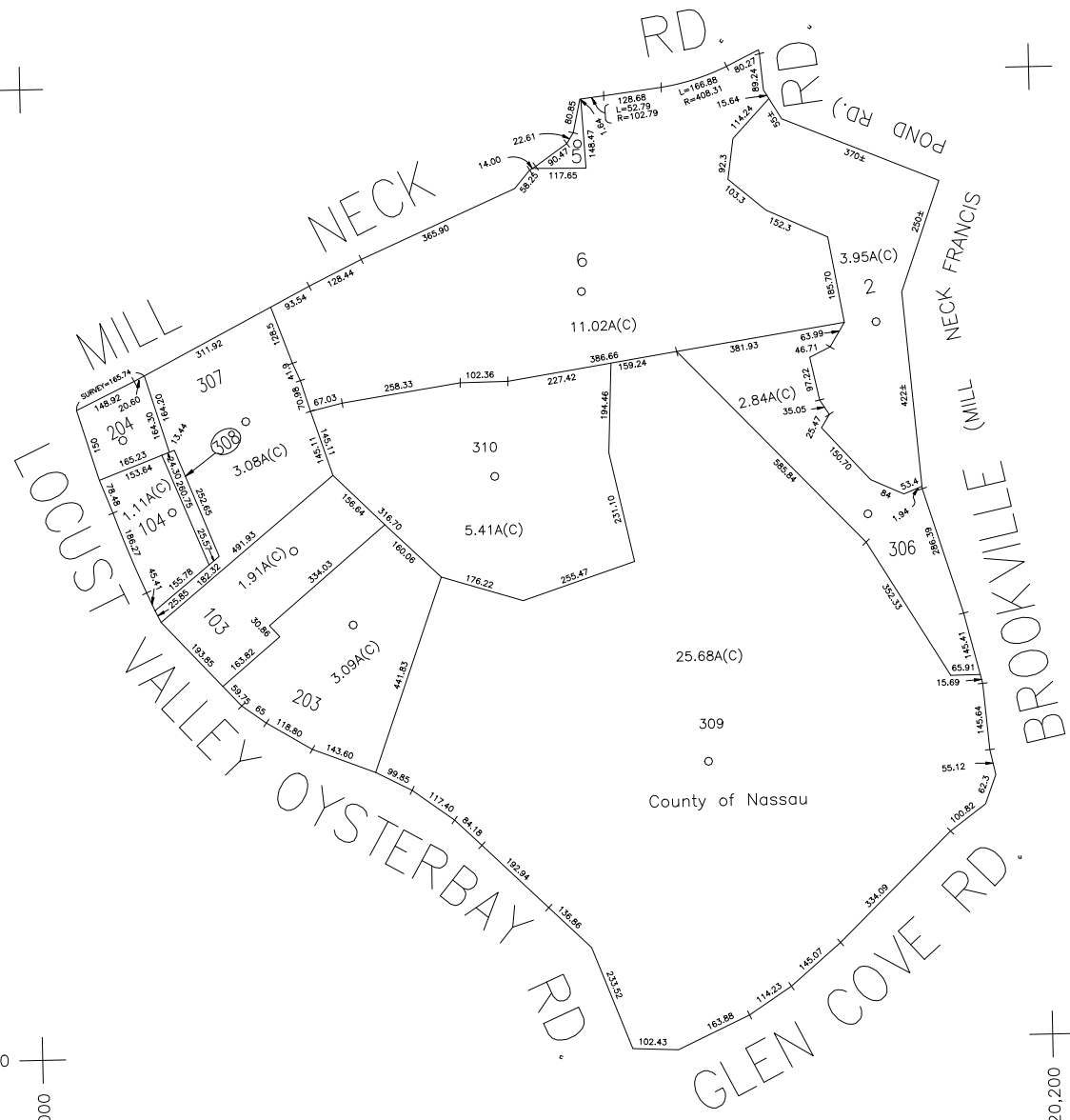
N 236,200



N 234,100

E 2,118,000

E 2,120,200



COPYRIGHT 1988 NASSAU COUNTY

LEGEND	
COUNTY LINE	---
TOWN LINE	---
VILLAGE LINE	---
SCHOOL DISTRICT LINE	---
PROPERTY LINE	---
SPECIAL DISTRICT LINE	---
BLOCK LIMIT	---
LOCATOR POINT	*
TAX MAP PARCEL NO.	246
CALCULATED ACREAGE	75A(C)
DEED ACREAGE	178
SCALED DIMENSION	327(S)
DEED DIMENSION	185.09
REFERENCE MAPS	
MAP NO.	

POLICE	
Locust Valley	12
LIBRARY	
Locust Valley	36

FIRE PROTECTION	
SANITARY	
REFUSE & GARBAGE	
REFUSE DISPOSAL	
SEWAGE COLLECTION	

SPECIAL DISTRICTS	
PUBLIC PARKING	
SEWER	
PARK	
IMPROVEMENT	
SIDEWALK	

DRAINAGE	
FIRE HYDRANT RENTAL	
Locust Valley	
GARBAGE	
ESCALATOR	
WATER POLLUTION CONTROL	
Town, County, College, Police HQ	1

MUNICIPALITIES	
TOWN OF: HEMPSTEAD	
NORTH HEMPSTEAD	
OYSTER BAY	
CITY OF: GLEN COVE	
LONG BEACH	
VILLAGE OF: Incorporated Village of Mill Neck	
SCHOOL DISTRICT	
Locust Valley/Locust Valley CSD # 3	4



Nassau County
Department of Assessment
 Harvey B. Levinson, Chairman
Land & Tax Map

Map Last Revised: September 29 2008

SEC. 29
BLK. S

SHEET 1 OF 1

CODE	SPECIAL	DISTRICT	WITHIN	CODE	SPECIAL	DISTRICT	WITHIN	CODE	SPECIAL	DISTRICT	WITHIN
816	1	12	36	47							