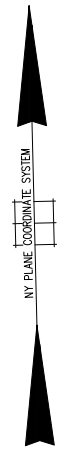
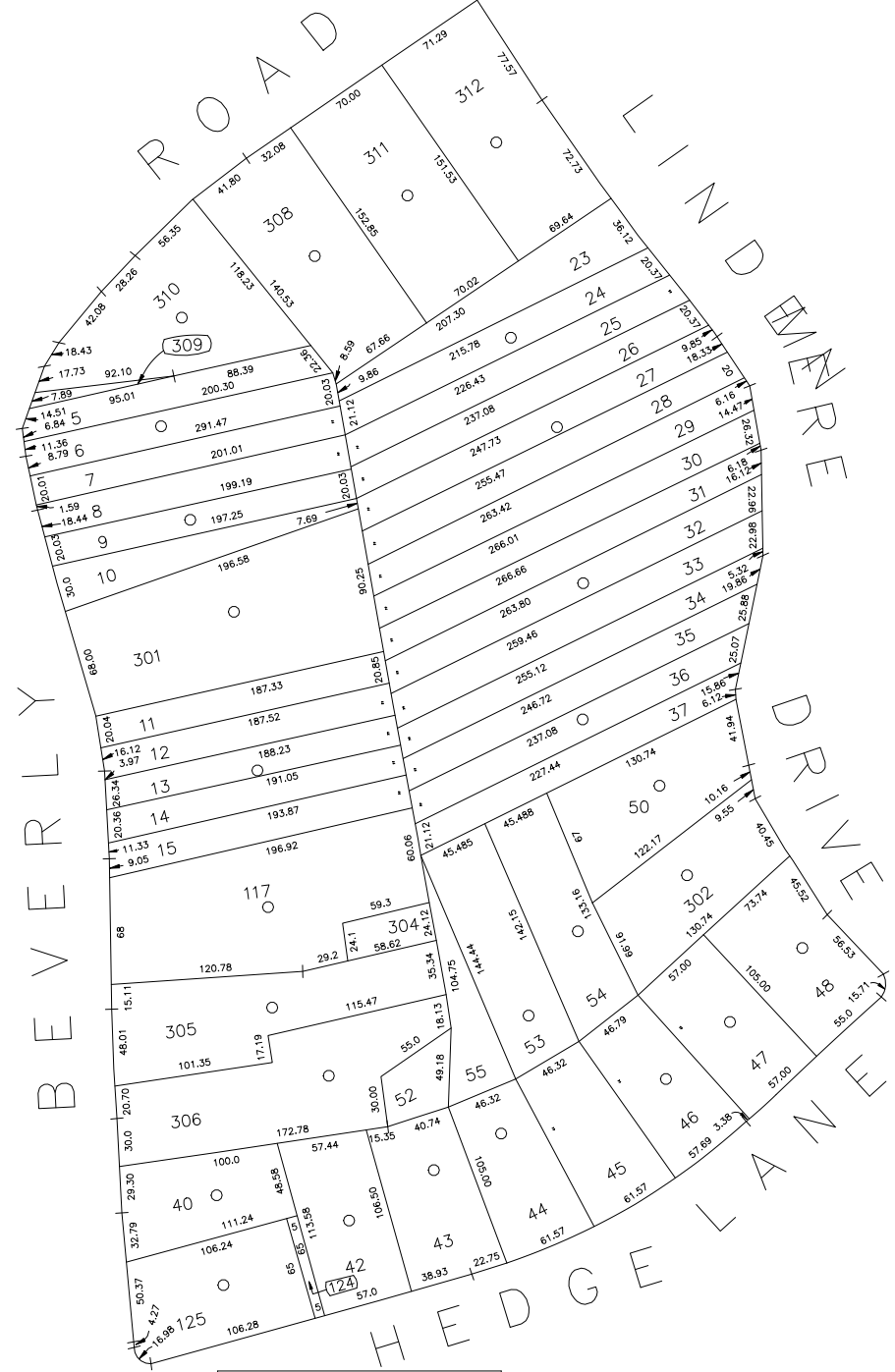


N 157,450



E 2,123,500

N 156,500

E 2,124,350

COPYRIGHT 1988 NASSAU COUNTY

LEGEND	
COUNTY LINE	---
TOWN LINE	---
VILLAGE LINE	---
SCHOOL DISTRICT LINE	---
PROPERTY LINE	---
SPECIAL DISTRICT LINE	---
BLOCK LIMIT	---
LOCATOR POINT	*
TAX MAP PARCEL NO.	246
CALCULATED ACREAGE	754(C)
DEED ACREAGE	174
SCALED DIMENSION	327(S)
DEED DIMENSION	185.09
REFERENCE MAPS	
MAP NO.	

POLICE	
County Police	3
WATER	
LIGHTING	
Town of Hempstead	47
LIBRARY	
FIRE	

FIRE PROTECTION	
Merrick	87
SANITARY	
REFUSE & GARBAGE	
Merrick - North Merrick	4D
REFUSE DISPOSAL	
Town of Hempstead	X
SEWAGE COLLECTION	
Sewage Collection District #3-MH	28

SPECIAL DISTRICTS	
PUBLIC PARKING	
Merrick	119
SEWER	
Nassau County Sewage Disposal District #3	30
PARK	
Town of Hempstead	V
IMPROVEMENT	
SIDEWALK	

DRAINAGE	
FIRE HYDRANT RENTAL	
GARBAGE	
ESCALATOR	
WATER POLLUTION CONTROL	
Town, County, College, Police HQ	1
Town Building Dept. Zoning & Appeal, Unincorporated Area	2

MUNICIPALITIES	
TOWN OF: HEMPSTEAD	
NORTH HEMPSTEAD	
OYSTER BAY	
CITY OF: GLEN COVE	
LONG BEACH	
VILLAGE OF:	
SCHOOL DISTRICT	
Merrick	25



**Nassau County**  
**Department of Assessment**  
**Land & Tax Map**

Map Last Revised: June 22 2009  
**SEC. 55**  
**BLK. 134-1 SHEET 1 OF 1**

CODE	SPECIAL	DISTRICT	WITHIN	CODE	SPECIAL	DISTRICT	WITHIN	CODE	SPECIAL	DISTRICT	WITHIN
128	1	119	2	28	3	39	47	4D	87	V	X