

N 179,400



VIRGINIA AVE.

SEAFORD-OYSTER BAY EXP. RD.
SERVICE

1.17A(C)
TOWN OF
OYSTER BAY
101

KENTUCKY AVE.

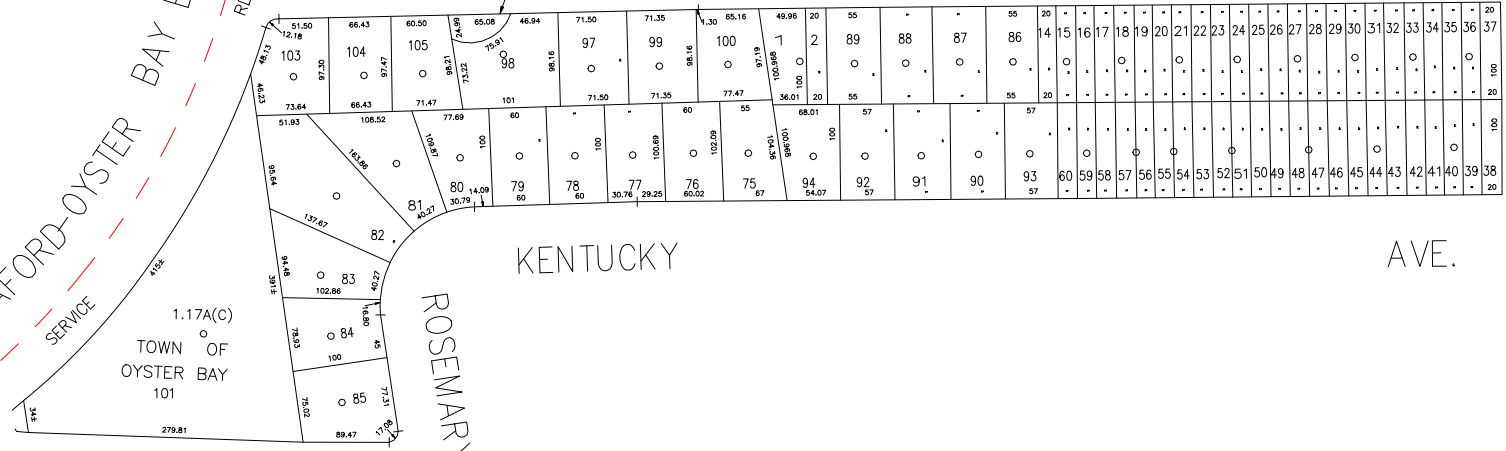
ROSEMARY DR.

AVE.

BALDWIN DR.

N 178,800
E 2,144,650

E 2,146,300



LEGEND

COUNTY LINE	---
TOWN LINE	- - - -
VILLAGE LINE
SCHOOL DISTRICT LINE
PROPERTY LINE	-----
SPECIAL DISTRICT LINE	-----
BLOCK LIMIT	-----
LOCATOR POINT	*
TAX MAP PARCEL NO.	246
CALCULATED ACREAGE	794(C)
DEED ACREAGE	176
SCALED DIMENSION	327(S)
DEED DIMENSION	185.69
REFERENCE MAPS	
MAP NO.	

POLICE	
County Police	3
South Farmingdale & Ext. #1	16
LIGHTING	
Town of Oyster Bay	23
LIBRARY	
Bethpage	31

FIRE PROTECTION	
SANITARY	
REFUSE & GARBAGE	
REFUSE DISPOSAL	
SEWAGE COLLECTION	
Sewage Collection District #3-F	21
Town of Oyster Bay	65

SPECIAL DISTRICTS

PUBLIC PARKING	
Town of Oyster Bay - Unincorporated Area	A
SEWER	
Nassau County Sewage Disposal District #3	30
PARK	
Bethpage	62
IMPROVEMENT	
SIDEWALK	

DRAINAGE	
Unincorporated Area of District #1	D
FIRE HYDRANT RENTAL	
GARBAGE	
Garbage District #1	93
ESCALATOR	
WATER POLLUTION CONTROL	
Town, County, College, Police HQ	1
Town Highway	2

MUNICIPALITIES

TOWN OF: HEMPSTEAD	
NORTH HEMPSTEAD	
OYSTER BAY	
CITY OF: GLEN COVE	
LONG BEACH	
VILLAGE OF:	
SCHOOL DISTRICT	
Plainville	18



Nassau County
Department of Assessment
Land & Tax Map

Map Last Revised: August 23 2010

SEC. 52
BLK. 47

SHEET 1 OF 1

CODE	SPECIAL	DISTRICT	WITHIN	CODE	SPECIAL	DISTRICT	WITHIN	CODE	SPECIAL	DISTRICT	WITHIN		
549	1	16	2	21	23	3	31	39	65	62	93	A	D

COPYRIGHT 1982 NASSAU COUNTY