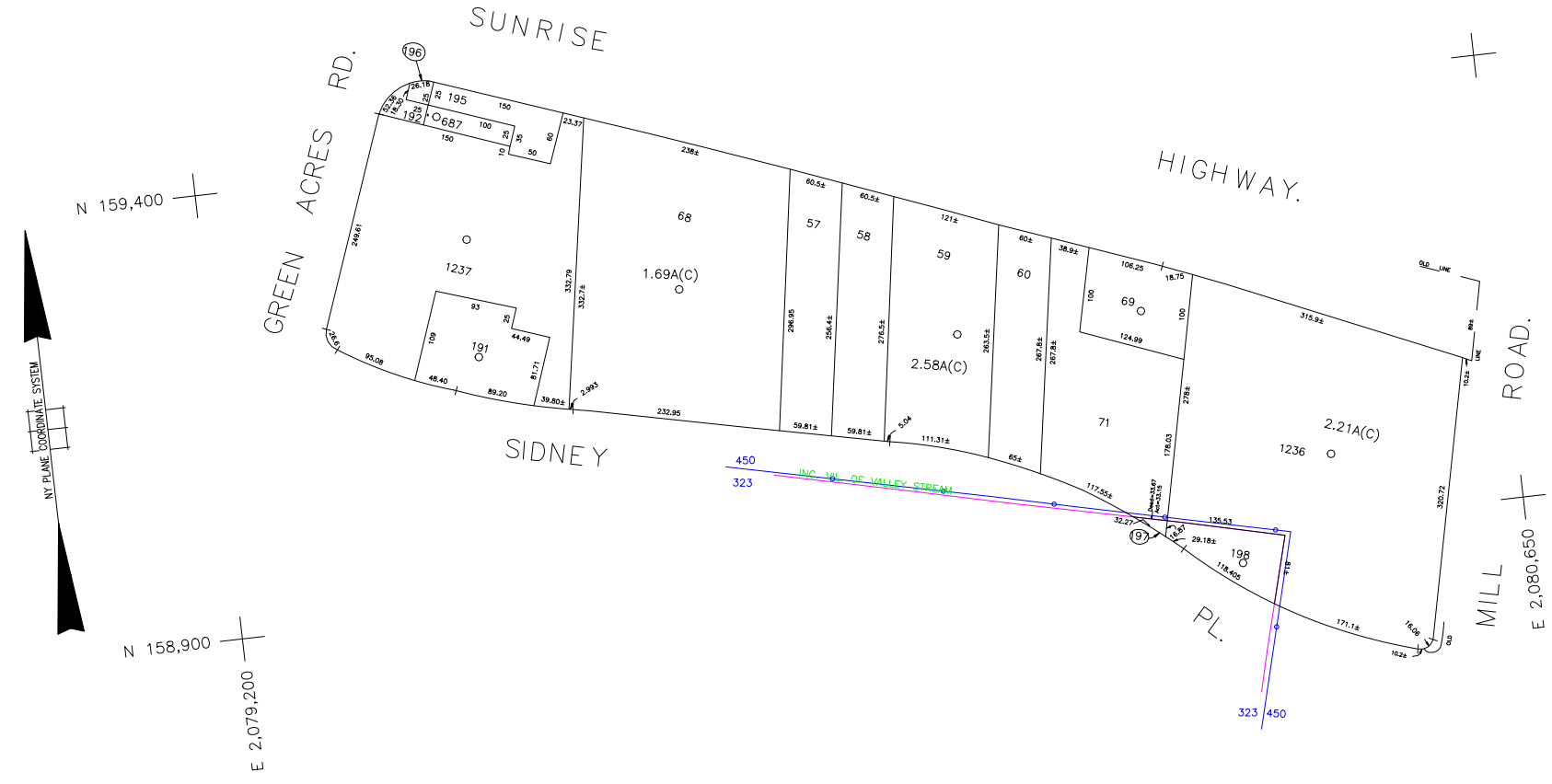


COPYRIGHT 1988 NASSAU COUNTY



LEGEND

COUNTY LINE	---
TOWN LINE	---
VILLAGE LINE	---
SCHOOL DISTRICT LINE	---
PROPERTY LINE	---
SPECIAL DISTRICT LINE	---
BLOCK LIMIT	---
LOCATOR POINT	*
TAX MAP PARCEL NO.	246
CALCULATED ACREAGE	734(C)
DEED ACREAGE	176
SCALED DIMENSION	327(S)
DEED DIMENSION	185.69
REFERENCE MAPS	
MAP NO.	

POLICE	DIST
County Police	3
WATER	
LIGHTING	
Town of Hempstead	47
LIBRARY	
Green Acres	33
FIRE	

FIRE PROTECTION	DIST
Green Acres Mill	140
SANITARY	
Sanitary District 1	91
REFUSE & GARBAGE	
REFUSE DISPOSAL	
SEWAGE COLLECTION	
Sewage Collection District #2-GA	97
Sewage Collection District #2-VS	A

SPECIAL DISTRICTS

PUBLIC PARKING	DIST
SEWER	
Nassau County Sewage Disposal District #2	202
PARK	
Town of Hempstead	V
IMPROVEMENT	
SIDEWALK	

DRAINAGE	DIST
FIRE HYDRANT RENTAL	
GARBAGE	
ESCALATOR	
WATER POLLUTION CONTROL	
Town, County, College, Police HQ	1
Town Building Dept, Zoning & Appeals, Unincorporated Area	2

MUNICIPALITIES

TOWN OF: HEMPSTEAD	
NORTH HEMPSTEAD	
OYSTER BAY	
CITY OF: GLEN COVE	
LONG BEACH	
VILLAGE OF:	
SCHOOL DISTRICT	
Valley Stream - 30	30



Nassau County
Department of Assessment
Land & Tax Map
Map Last Revised: August 23 2010

SEC. 39
BLK. 560
SHEET 1 OF 1

CODE	SPECIAL	DISTRICT	WITHIN	CODE	SPECIAL	DISTRICT	WITHIN	CODE	SPECIAL	DISTRICT	WITHIN
323	1	140	2	202	3	33	47	91	97	V	
450	1	202	3	A							