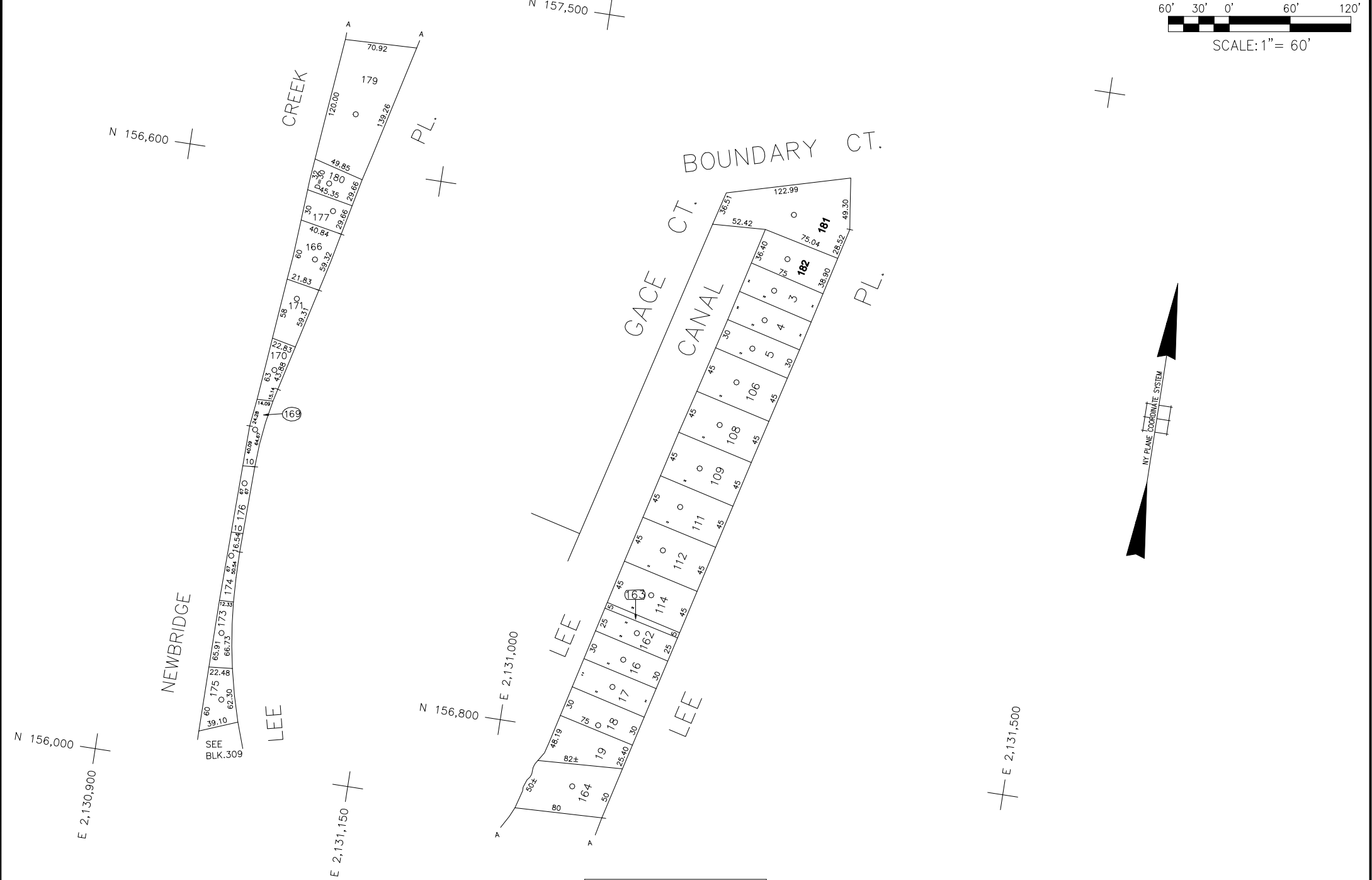


COPYRIGHT 1988 NASSAU COUNTY



LEGEND

COUNTY LINE	---
TOWN LINE	---
VILLAGE LINE	---
SCHOOL DISTRICT LINE	---
PROPERTY LINE	---
SPECIAL DISTRICT LINE	---
BLOCK LIMIT	---
LOCATOR POINT	*
TAX MAP PARCEL NO.	246
CALCULATED ACREAGE	75A(C)
DEED ACREAGE	178
SCALED DIMENSION	327(B)
DEED DIMENSION	185.09
REFERENCE MAPS	
MAP NO.	

POLICE	DIST
County Police	3
WATER	
LIGHTING	
Town of Hempstead	47
LIBRARY	
Baltimore	60

FIRE PROTECTION	DIST
SANITARY	
REFUSE & GARBAGE	
Town of Hempstead	L
REFUSE DISPOSAL	
Town of Hempstead	X
SEWAGE COLLECTION	
Sewage Collection District #3-MH	28

SPECIAL DISTRICTS

PUBLIC PARKING	DIST
SEWER	
Nassau County Sewage Disposal District #3	30
PARK	
Town of Hempstead	V
IMPROVEMENT	
SIDEWALK	

DRAINAGE	DIST
FIRE HYDRANT RENTAL	
GARBAGE	
ESCALATOR	
WATER POLLUTION CONTROL	
Town, County, College, Police HQ	1
Town Building Dept, Zoning & Appeals, Unincorporated Area	2

MUNICIPALITIES

TOWN OF:	
HEMPSTEAD	
NORTH HEMPSTEAD	
OYSTER BAY	
CITY OF:	
GLEN COVE	
LONG BEACH	
VILLAGE OF:	
SCHOOL DISTRICT	
Bellmore	7



Nassau County
Department of Assessment

Land & Tax Map

Map Last Revised: August 21 2012

SEC. 63
BLK. 13

SHEET 1 OF 1