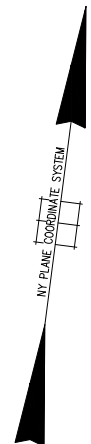
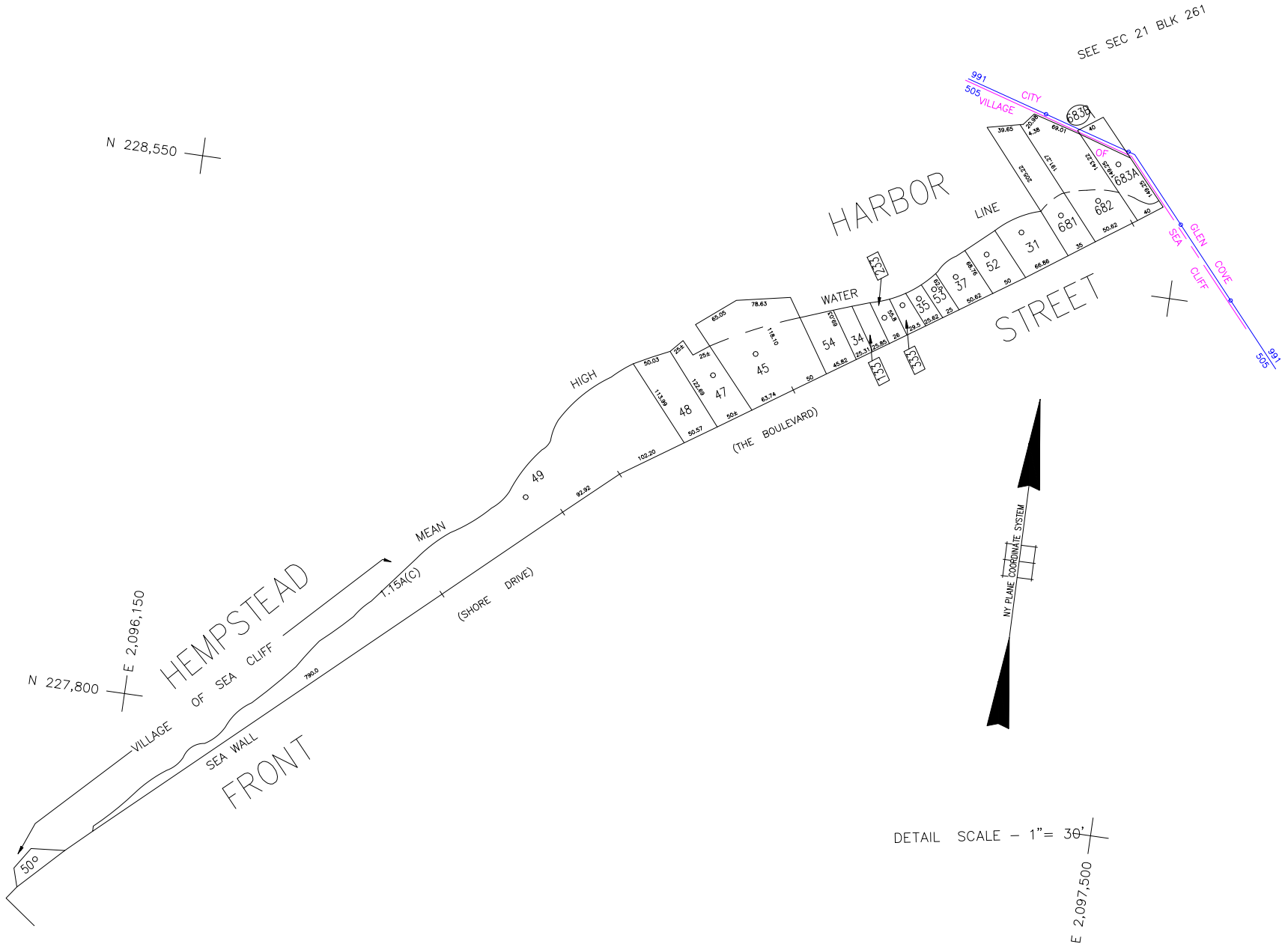




N 228,550

N 227,800
E 2,096,150



DETAIL SCALE - 1" = 30'

E 2,097,500

LEGEND

COUNTY LINE	---
TOWN LINE	---
VILLAGE LINE	---
SCHOOL DISTRICT LINE	---
PROPERTY LINE	---
SPECIAL DISTRICT LINE	---
BLOCK LIMIT	---
LOCATOR POINT	*
TAX MAP PARCEL NO.	246
CALCULATED ACREAGE	75A(C)
DEED ACREAGE	176
SCALED DIMENSION	327(6)
DEED DIMENSION	185.09
REFERENCE MAPS	
MAP NO.	

POLICE	DIST	
County Police	3	
WATER		
LIGHTING		
LIBRARY		
FIRE		

SPECIAL DISTRICTS

FIRE PROTECTION	DIST	
SANITARY		
REFUSE & GARBAGE		
REFUSE DISPOSAL		
SEWAGE COLLECTION		

SPECIAL DISTRICTS

PUBLIC PARKING	DIST	
SEWER		
PARK		
IMPROVEMENT		
SIDEWALK		

DRAINAGE	DIST	
FIRE HYDRANT RENTAL		
GARBAGE		
ESCALATOR		
WATER POLLUTION CONTROL		
Town, County, College, Police HQ	1	

MUNICIPALITIES

TOWN OF: HEMPSTEAD	
NORTH HEMPSTEAD	
OYSTER BAY	
CITY OF: GLEN COVE	
LONG BEACH	
VILLAGE OF: Incorporated Village of Sea Cliff	
SCHOOL DISTRICT	
Sea Cliff	24
Glen Cove	6



Nassau County
Department of Assessment
 James E. Davis, Acting Assessor
Land & Tax Map

Map Last Revised: January 7 2013

SEC. 21
BLK. A

SHEET 4 OF 4

CODE	SPECIAL	DISTRICT	WITHIN	CODE	SPECIAL	DISTRICT	WITHIN	CODE	SPECIAL	DISTRICT	WITHIN
806	1	3									
991	1										