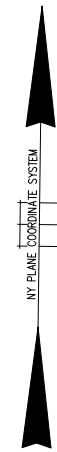
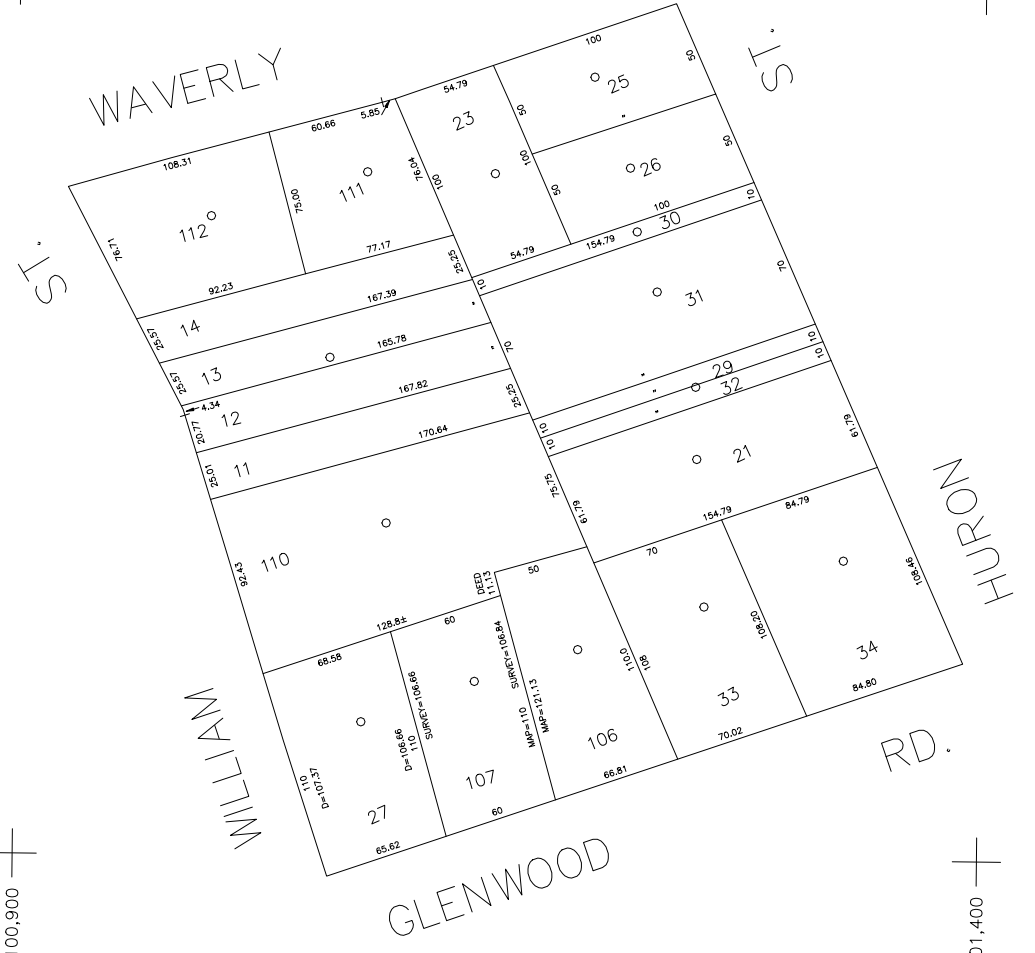


N 221,500

ST.

+



N 221,050

E 2,100,900

+

E 2,101,400

COPYRIGHT 1988 NASSAU COUNTY

LEGEND	
COUNTY LINE	---
TOWN LINE	----
VILLAGE LINE	-----
SCHOOL DISTRICT LINE	-----
PROPERTY LINE	-----
SPECIAL DISTRICT LINE	-----
BLOCK LIMIT	-----
LOCATOR POINT	*
TAX MAP PARCEL NO.	246
CALCULATED ACREAGE	734(C)
DEED ACREAGE	174
SCALED DIMENSION	327(S)
DEED DIMENSION	185.89
REFERENCE MAPS	
MAP NO.	

POLICE	
County Police	3
Water	
Glenwood-Glen Head	7
Lighting	
Town of Oyster Bay	23
Library	
Fire	

SPECIAL DISTRICTS	
FIRE PROTECTION	
Glenwood - Glen Head	41
SANITARY	
REFUSE & GARBAGE	
REFUSE DISPOSAL	
SEWAGE COLLECTION	

SPECIAL DISTRICTS	
PUBLIC PARKING	
Town of Oyster Bay - Unincorporated Area	A
SEWER	
PARK	
Glenwood - Glen Head	83
IMPROVEMENT	
SIDEWALK	

SPECIAL DISTRICTS	
DRAINAGE	
Unincorporated Area of District #1	D
FIRE HYDRANT RENTAL	
GARBAGE	
Glenwood - Glen Head	50
ESCALATOR	
WATER POLLUTION CONTROL	
Town, County, College, Police HQ	1
Town Highway	2

MUNICIPALITIES	
TOWN OF:	
Hempstead	
North Hempstead	
Oyster Bay	
City of:	
Glen Cove	
Long Beach	
Village of:	
SCHOOL DISTRICT	
Glenwood Landing	1



Nassau County
Department of Assessment
Charles O'Shea, Chairman
Land & Tax Map

Map Last Revised: January 7 2003

SEC. 21
BLK. 12

SHEET 1 OF 1

CODE	SPECIAL	DISTRICT	WITHIN	CODE	SPECIAL	DISTRICT	WITHIN	CODE	SPECIAL	DISTRICT	WITHIN
801	1	2	23	3	41	50	83	7	A	D	