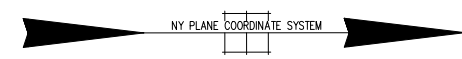
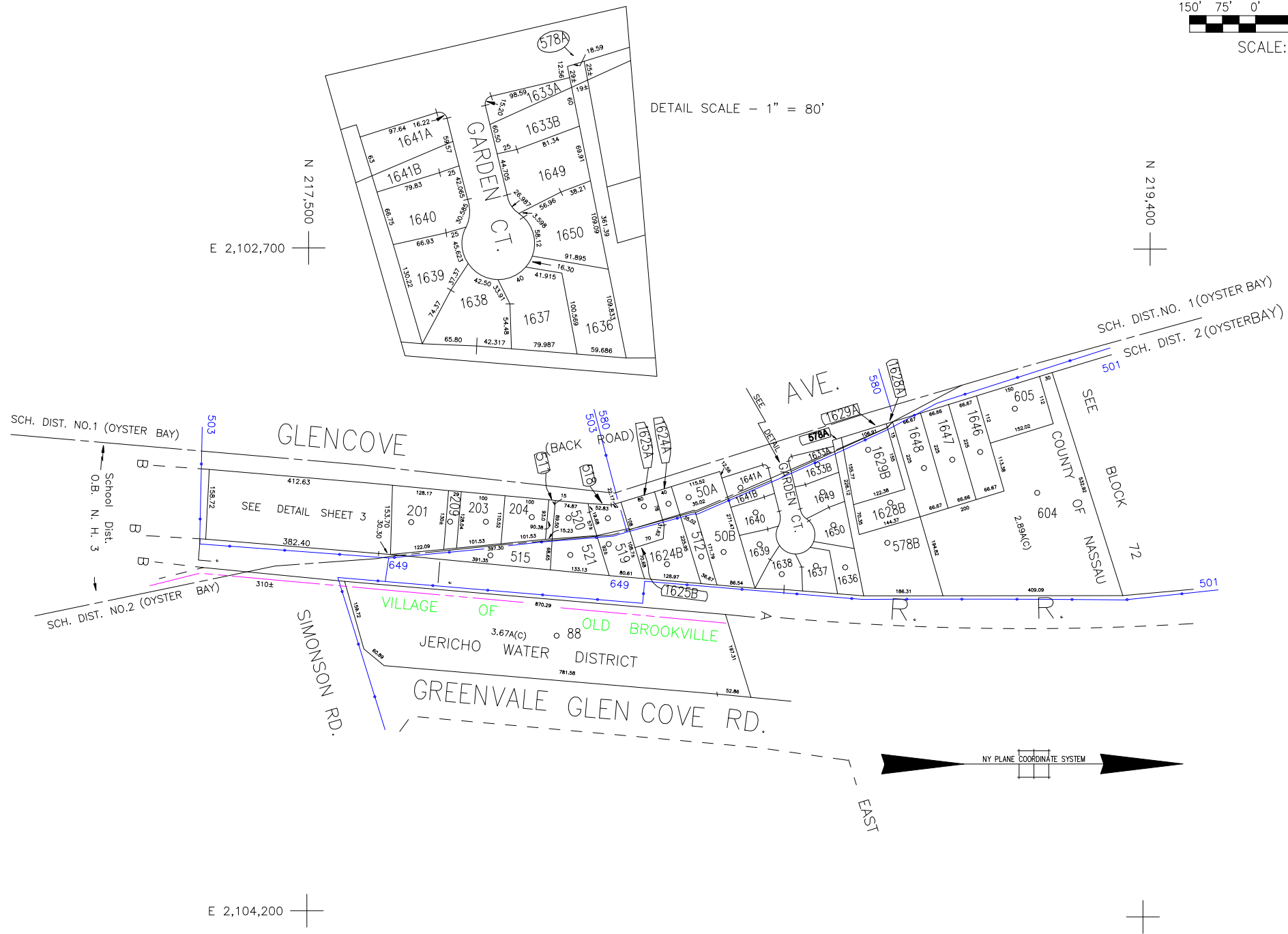


DETAIL SCALE - 1" = 80'



N 217,500  
E 2,102,700

N 219,400

E 2,104,200

COPYRIGHT 1988 NASSAU COUNTY

LEGEND	
COUNTY LINE	---
TOWN LINE	---
VILLAGE LINE	---
SCHOOL DISTRICT LINE	---
PROPERTY LINE	---
SPECIAL DISTRICT LINE	---
BLOCK LIMIT	---
LOCATOR POINT	*
TAX MAP PARCEL NO.	246
CALCULATED ACREAGE	754(C)
DEED ACREAGE	174
SCALED DIMENSION	327(S)
DEED DIMENSION	185.69
REFERENCE MAPS	
MAP NO.	

POLICE	
County Police	
Glenwood-Glen Head	
Jericho	
LIGHTING	
Town of Oyster Bay	
LIBRARY	
FIRE	

FIRE PROTECTION	
Glenwood - Glen Head	
SANITARY	
REFUSE & GARBAGE	
REFUSE DISPOSAL	
SEWAGE COLLECTION	

SPECIAL DISTRICTS	
PUBLIC PARKING	
Town of Oyster Bay - Unincorporated Area	
SEWER	
PARK	
Glenwood - Glen Head	
IMPROVEMENT	
SIDEWALK	

DRAINAGE	
Unincorporated Area of District #1	
FIRE HYDRANT RENTAL	
GARBAGE	
Glenwood - Glen Head	
ESCALATOR	
WATER POLLUTION CONTROL	
Town, County, College, Police Hd	
Town Highway	

MUNICIPALITIES	
TOWN OF: HEMPSTEAD	
NORTH HEMPSTEAD	
OYSTER BAY	
CITY OF: GLEN COVE	
LONG BEACH	
VILLAGE OF:	
SCHOOL DISTRICT	
Glen Head	



**Nassau County**  
**Department of Assessment**  
 James E. Davis, Acting Assessor  
**Land & Tax Map**

Map Last Revised: June 5 2013

**SEC. 20**  
**BLK. G**

SHEET 2 OF 3

CODE	SPECIAL	DISTRICT	WITHIN	CODE	SPECIAL	DISTRICT	WITHIN	CODE	SPECIAL	DISTRICT	WITHIN
501	1	2	23	3	41	50	63	7	A	D	
503	1	10	2	23	3	41	50	A	D		
511	1	10									
580	1	2	23	3	41	50	7	A	D		
649	1	10	2	23	3	41	50	63	A	D	