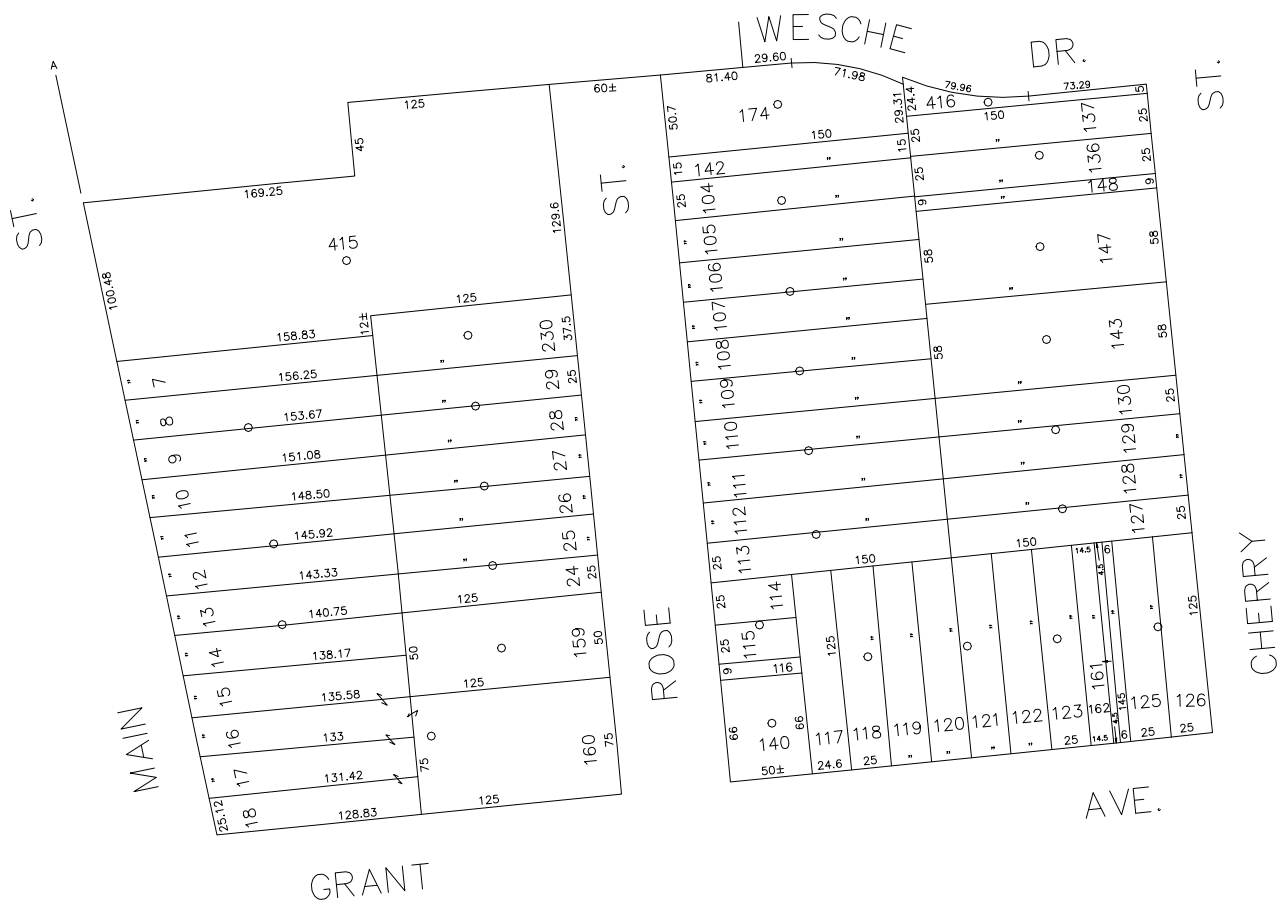


N 184,700

N 184,150
E 2,153,500

E 2,154,350



INC. VILLAGE OF FARMINGDALE
LOT NO: 415
UNITED METHODIST CHURCH OF FARMINGDALE
LOT NOS: 11 TO 18, 159 & 160

COPYRIGHT 1982 NASSAU COUNTY

LEGEND	
COUNTY LINE	---
TOWN LINE	----
VILLAGE LINE	-----
SCHOOL DISTRICT LINE	-----
PROPERTY LINE	-----
SPECIAL DISTRICT LINE	-----
BLOCK LIMIT	-----
LOCATOR POINT	*
TAX MAP PARCEL NO.	246
CALCULATED ACREAGE	754(C)
DEED ACREAGE	178
SCALED DIMENSION	327(S)
DEED DIMENSION	185.89
REFERENCE MAPS	
MAP NO.	

POLICE	
County Police	3
WATER	
LIGHTING	
LIBRARY	
FIRE	

SPECIAL DISTRICTS	
FIRE PROTECTION	
SANITARY	
REFUSE & GARBAGE	
REFUSE DISPOSAL	
SEWAGE COLLECTION	
Sewage Collection District #3-F	21
Town of Oyster Bay	65

SPECIAL DISTRICTS	
PUBLIC PARKING	
SEWER	
Nassau County Sewage Disposal District #3	30
PARK	
IMPROVEMENT	
SIDEWALK	

SPECIAL DISTRICTS	
DRAINAGE	
FIRE HYDRANT RENTAL	
GARBAGE	
Garbage District #2	53
ESCALATOR	
WATER POLLUTION CONTROL	
Town, County, College, Police HQ	1

MUNICIPALITIES	
TOWN OF:	
HEMPSTEAD	
NORTH HEMPSTEAD	
OYSTER BAY	
CITY OF:	
GLEN COVE	
LONG BEACH	
VILLAGE OF:	
SCHOOL DISTRICT	
Farmingdale	22



Nassau County
Department of Assessment
James E. Davis, Acting Assessor
Land & Tax Map
Map Last Revised: June 24 2014

SEC. 49
BLK. 106

SHEET 2 OF 2

CODE	SPECIAL	DISTRICT	WITHIN	CODE	SPECIAL	DISTRICT	WITHIN	CODE	SPECIAL	DISTRICT	WITHIN
800	1	21	3	30	53	56					