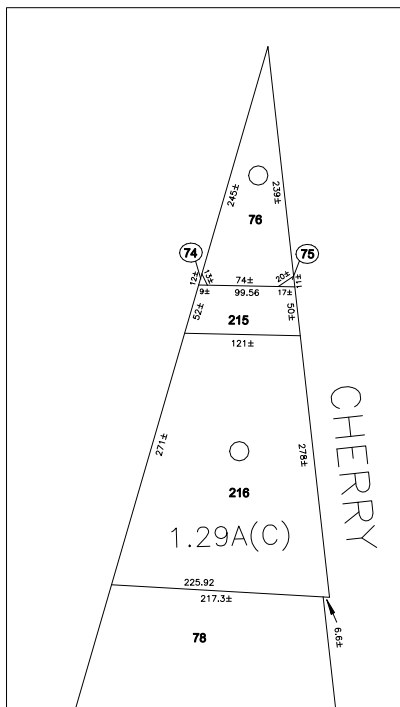


N 194,600



DETAIL SCALE 1" = 100'

NEWBRIDGE

N 189,800
E 2,128,700

ROAD

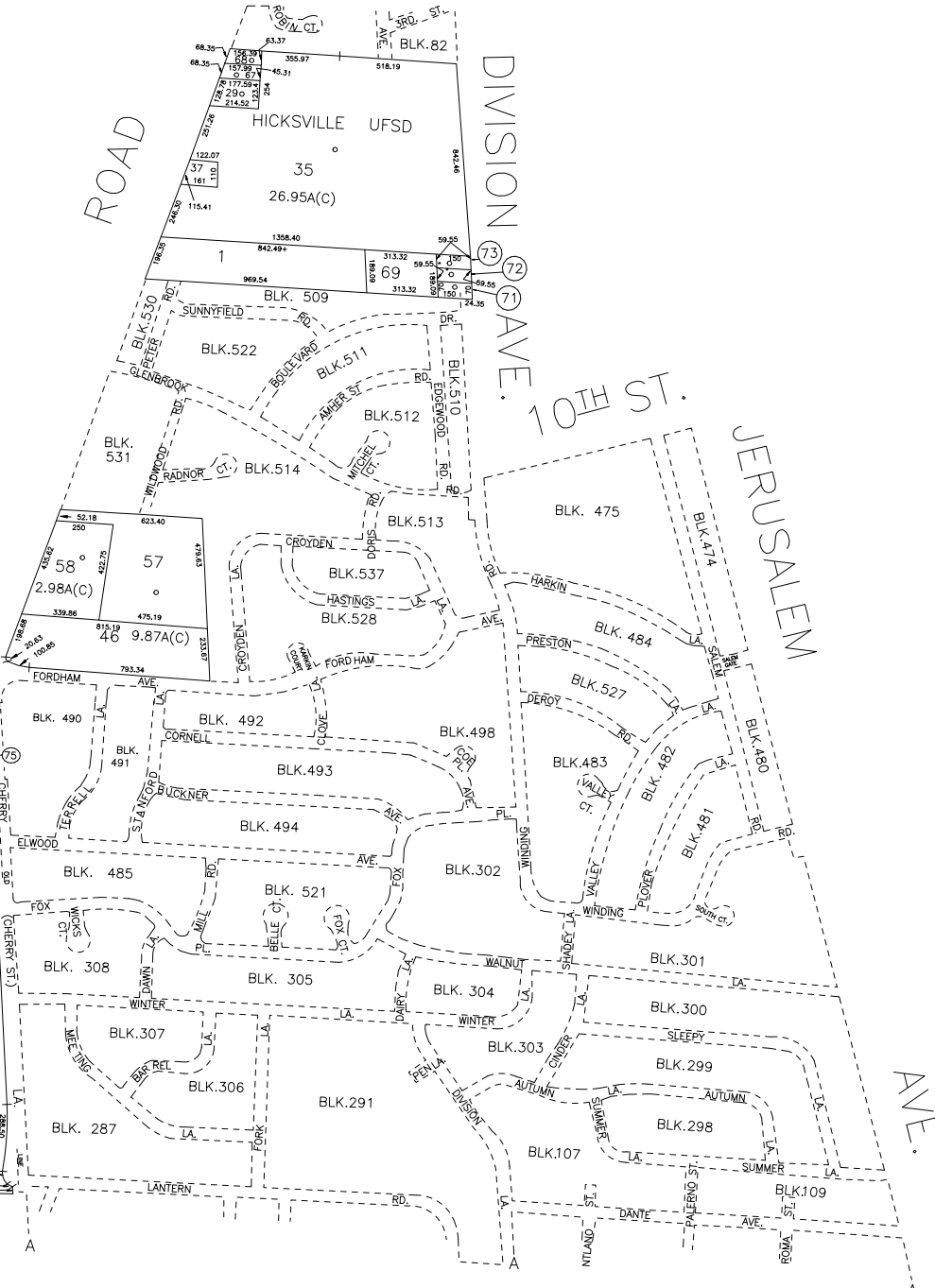
DIVISION CAVE.

10TH ST.

JERUSALEM

AVE.

E 2,134,100



STATE OF NEW YORK
LOT NOS: 74,75,215 & 216

ROMAN CATHOLIC CHURCH OF HOLY FAMILY
LOT NOS: 46 & 57

TOWN OF OYSTER BAY HOUSING AUTH.
LOT NO: 58

LEGEND

COUNTY LINE	---
TOWN LINE	---
VILLAGE LINE	---
SCHOOL DISTRICT LINE	---
PROPERTY LINE	---
SPECIAL DISTRICT LINE	---
BLOCK LIMIT	---
LOCATOR POINT	*
TAX MAP PARCEL NO.	246
CALCULATED ACREAGE	754(C)
DEED ACREAGE	176
SCALED DIMENSION	327(S)
DEED DIMENSION	185.69
REFERENCE MAPS	
MAP NO.	

POLICE

COUNTY Police	DIST 3
Hicksville	DIST 9
Town of Oyster Bay	DIST 23
Hicksville	DIST 33

SPECIAL DISTRICTS

FIRE PROTECTION	DIST 3
SANITARY	DIST 9
REFUSE & GARBAGE	DIST 39
REFUSE DISPOSAL	DIST 57
SEWAGE COLLECTION	DIST 18
FIRE IMPROVEMENT	DIST 18
SIDEWALK	DIST 65

SPECIAL DISTRICTS

PUBLIC PARKING	DIST A
SEWER	DIST 39
PARK	DIST 57
IMPROVEMENT	DIST 2

MUNICIPALITIES

DRAINAGE	DIST D
FIRE HYDRANT RENTAL	DIST 93
GARBAGE	DIST 93
ESCALATOR	DIST 1
WATER POLLUTION CONTROL	DIST 1

MUNICIPALITIES

TOWN OF: HEMPSTEAD	DIST 17
NORTH HEMPSTEAD	
OYSTER BAY	
CITY OF: GLEN COVE	
LONG BEACH	
VILLAGE OF:	
SCHOOL DISTRICT	
Hicksville	



Nassau County
Department of Assessment
James E. Davis, Acting Assessor
Land & Tax Map

Map Last Revised: August 21 2014

SEC. 45
BLK. L

SHEET 1 OF 1

CODE	SPECIAL	DISTRICT	WITHIN	CODE	SPECIAL	DISTRICT	WITHIN	CODE	SPECIAL	DISTRICT	WITHIN		
811	1	18	2	23	3	39	39	85	87	9	93	A	D