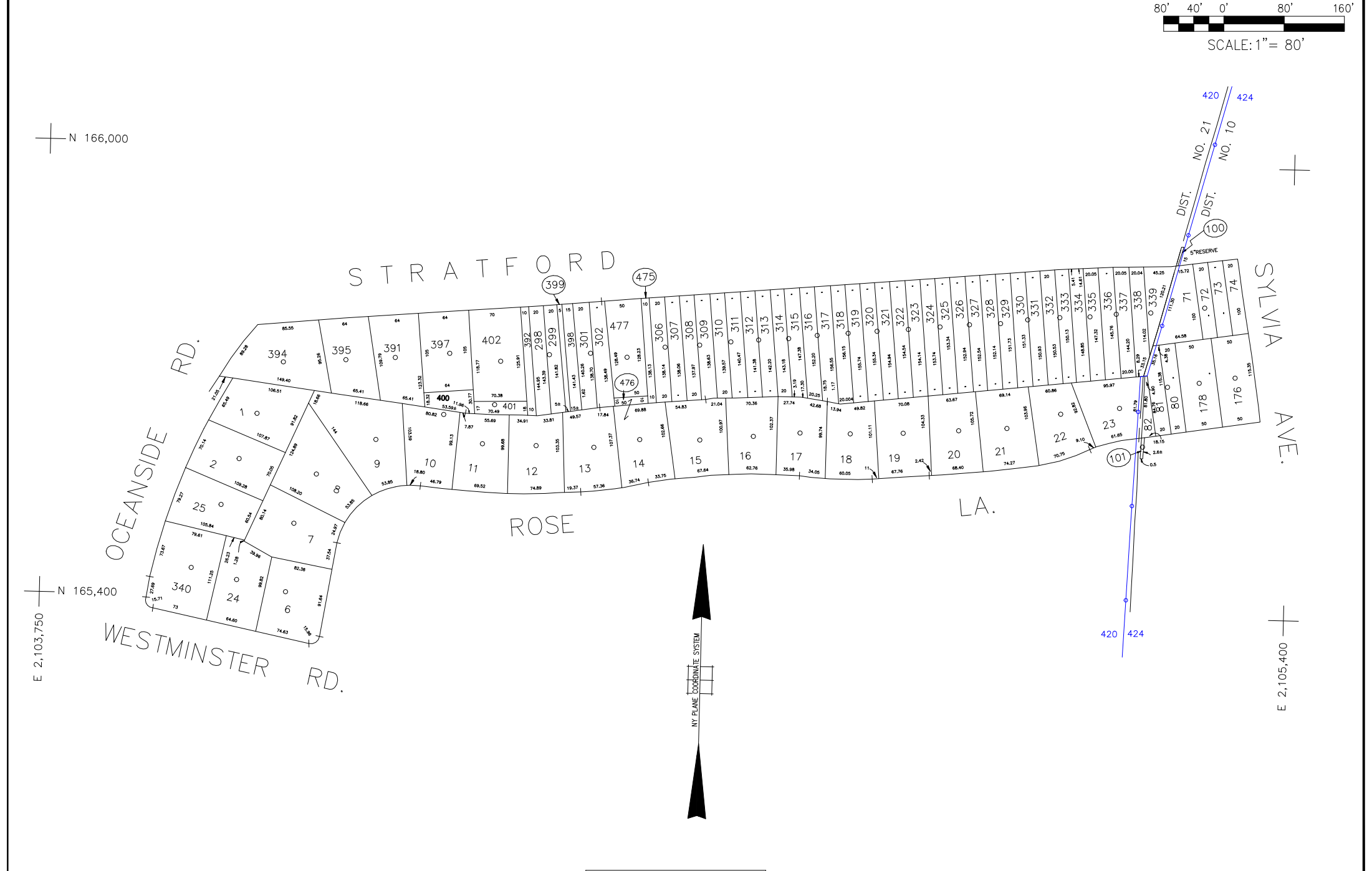


N 166,000

N 165,400
E 2,103,750

E 2,105,400



LEGEND

COUNTY LINE	---
TOWN LINE	---
VILLAGE LINE	---
SCHOOL DISTRICT LINE	---
PROPERTY LINE	---
SPECIAL DISTRICT LINE	---
BLOCK LIMIT	---
LOCATOR POINT	*
TAX MAP PARCEL NO.	246
CALCULATED ACREAGE	734(C)
DEED ACREAGE	176
SCALED DIMENSION	327(S)
DEED DIMENSION	185.69
REFERENCE MAPS	
MAP NO.	

POLICE		DIST	
County Police		3	
WATER		DIST	
Town of Hempstead		47	
LIGHTING		DIST	
Town of Hempstead		47	
LIBRARY		DIST	
Bellevue		55	
South Hempstead		78	

FIRE PROTECTION		DIST	
Sanitary		82	
Sanitary District 2		82	
REFUSE & GARBAGE		202	
REFUSE DISPOSAL		DIST	
Town of Hempstead		X	
SEWAGE COLLECTION		DIST	
Sewage Collection District #2-B		B	

PUBLIC PARKING		DIST	
Bellevue		10	
SEWER		DIST	
Nassau County Sewage Disposal District #2		202	
PARK		DIST	
Town of Hempstead		V	
IMPROVEMENT		DIST	
SIDEWALK		DIST	

DRAINAGE		DIST	
FIRE HYDRANT RENTAL		DIST	
GARBAGE		DIST	
ESCALATOR		DIST	
WATER POLLUTION CONTROL		DIST	
Town, County, College, Police HQ		1	
Town Building Dept. Zoning & Appeals, Unincorporated Area		2	

MUNICIPALITIES		DIST	
TOWN OF: HEMPSTEAD			
NORTH HEMPSTEAD			
OYSTER BAY			
CITY OF: GLEN COVE			
LONG BEACH			
VILLAGE OF: ROCKVILLE CENTRE			
SCHOOL DISTRICT		DIST	
Bellevue		10	
Rockville Centre		21	

**SEC. 36
BLK. 503**

Nassau County Department of Assessment
 Harvey B. Levinson, Chairman
Land & Tax Map
 Map Last Revised: January 23 2015
 SHEET 1 OF 1

CODE	SPECIAL	DISTRICT	WITHIN	CODE	SPECIAL	DISTRICT	WITHIN	CODE	SPECIAL	DISTRICT	WITHIN
420	1	2	202 3	47 78	82	B	V X				
424	1	10	2 202 3	47 68	82	B	V X				