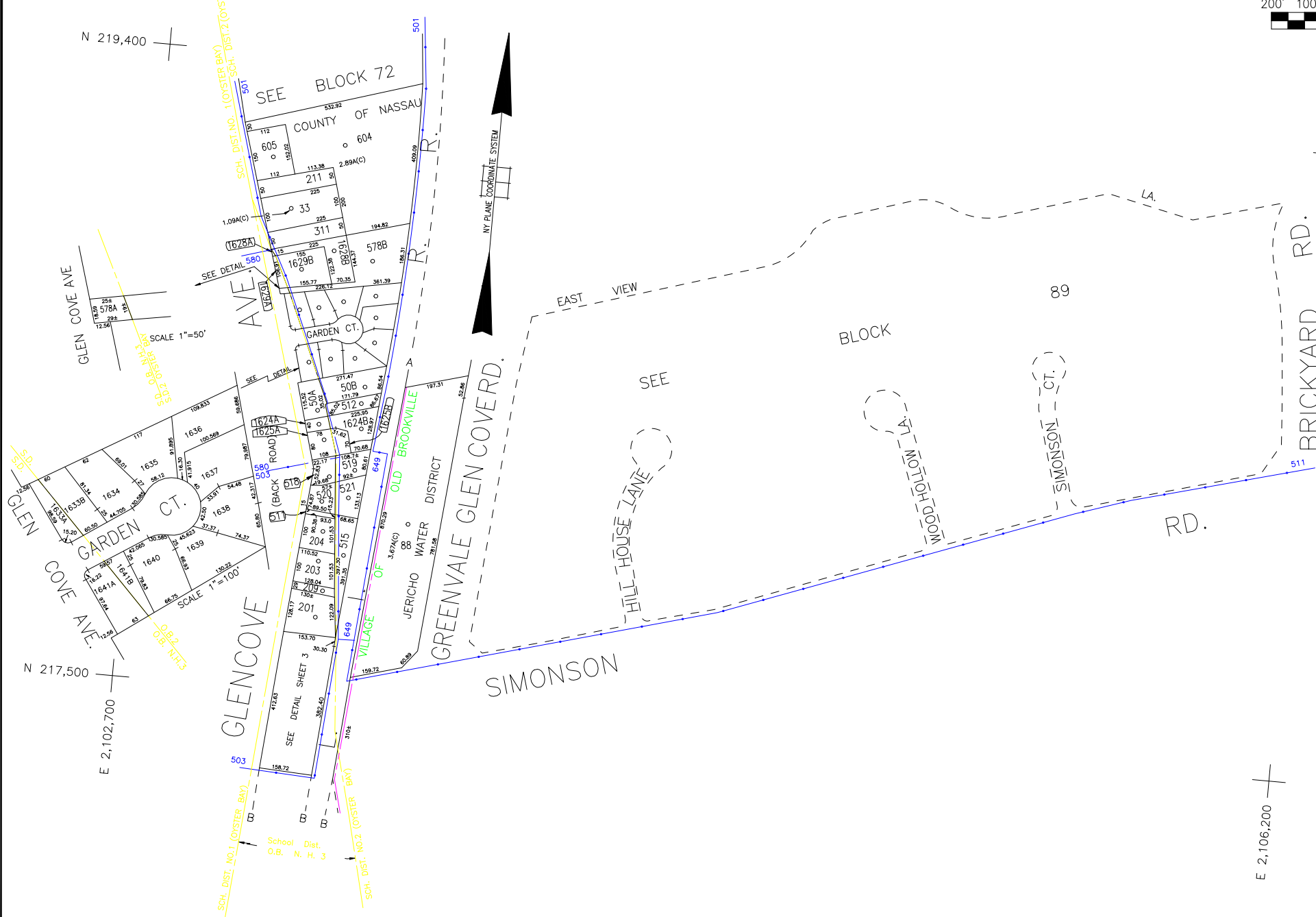


N 219,400



COPYRIGHT 1998 NASSAU COUNTY

**LEGEND**

COUNTY LINE	---
TOWN LINE	---
VILLAGE LINE	---
SCHOOL DISTRICT LINE	---
PROPERTY LINE	---
SPECIAL DISTRICT LINE	---
BLOCK LIMIT	---
LOCATOR POINT	*
TAX MAP PARCEL NO.	246
CALCULATED ACREAGE	734(C)
DEED ACREAGE	174
SCALED DIMENSION	327(S)
DEED DIMENSION	185.69
REFERENCE MAPS	
MAP NO.	

POLICE		DIST
County Police		3
Glenwood-Glen Head		7
Jericho		10
Town of Oyster Bay		23
LIBRARY		
FIRE		

FIRE PROTECTION		DIST
Glenwood - Glen Head		41
SANITARY		
REFUSE & GARBAGE		
REFUSE DISPOSAL		
SEWAGE COLLECTION		

**SPECIAL DISTRICTS**

PUBLIC PARKING		DIST
Town of Oyster Bay - Unincorporated Area		A
SEWER		
PARK		
Glenwood - Glen Head		63
IMPROVEMENT		
SIDEWALK		

DRAINAGE		DIST
Unincorporated Area of District #1		D
FIRE HYDRANT RENTAL		
GARBAGE		
Glenwood - Glen Head		50
ESCALATOR		
WATER POLLUTION CONTROL		
Town, County, College, Police HQ		1
Town Highway		2

**MUNICIPALITIES**

TOWN OF: HEMPSTEAD		
NORTH HEMPSTEAD		
OYSTER BAY		
CITY OF: GLEN COVE		
LONG BEACH		
VILLAGE OF:		
SCHOOL DISTRICT		
Glen Head		2

CODE	SPECIAL	DISTRICT	WITHIN	CODE	SPECIAL	DISTRICT	WITHIN	CODE	SPECIAL	DISTRICT	WITHIN
501	1	2	23	3	41	50	63	7	A	D	
503	1	10	2	23	3	41	50	A	D		
511	1	10									
580	1	2	23	3	41	50	7	A	D		
649	1	10	2	23	3	41	50	63	A	D	



**Nassau County**  
**Department of Assessment**  
*Charles O'Shea, Chairman*  
**Land & Tax Map**

**SEC. 20**  
**BLK. G**

Map Last Revised: January 31 2003

**SHEET 2 OF 3**