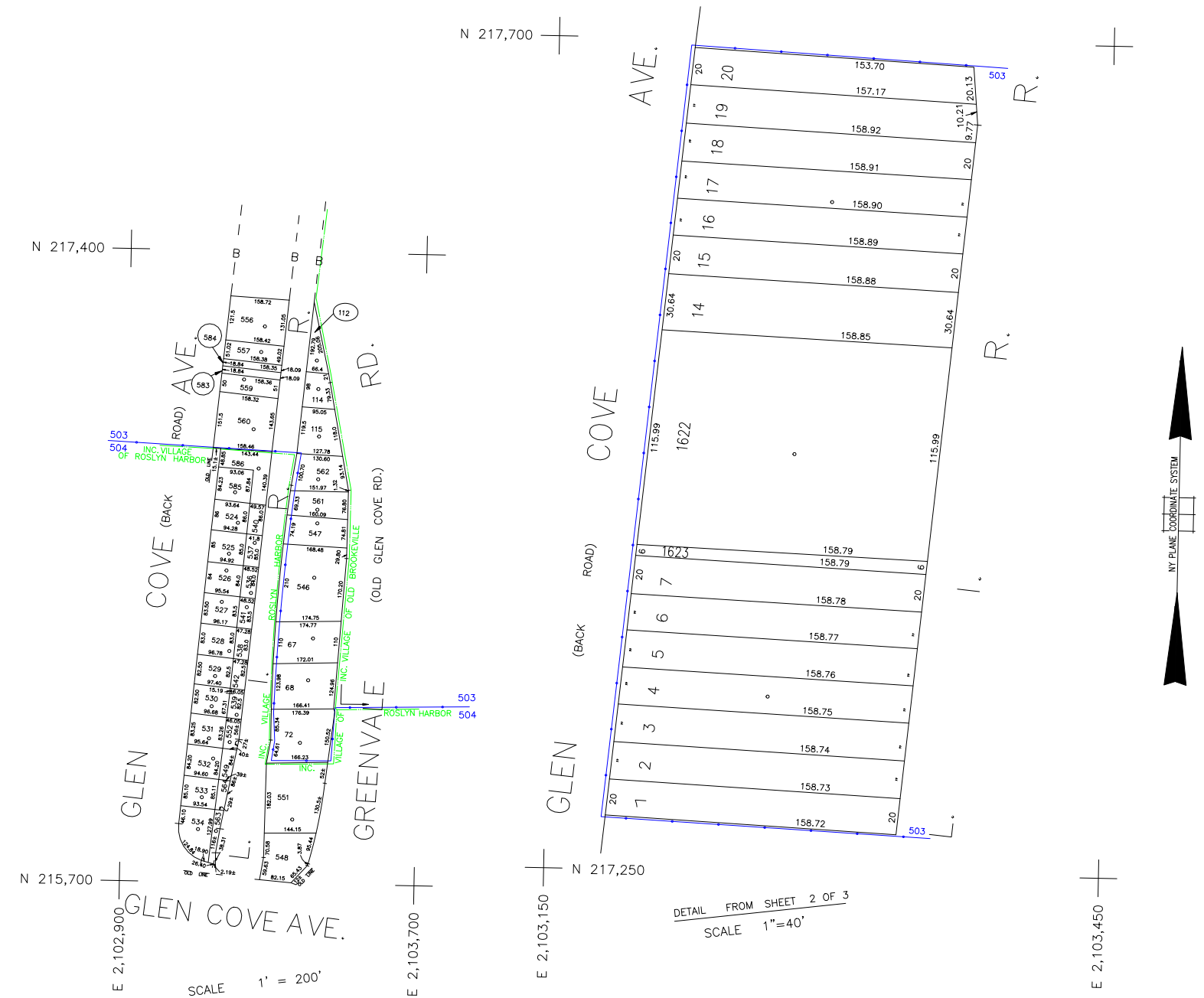


COPYRIGHT 1998 NASSAU COUNTY



DETAIL FROM SHEET 2 OF 3
SCALE 1" = 40'

LEGEND

COUNTY LINE	---
TOWN LINE	- - - -
VILLAGE LINE	— · — · —
SCHOOL DISTRICT LINE	— · — · —
PROPERTY LINE	— · — · —
SPECIAL DISTRICT LINE	— · — · —
BLOCK LIMIT	— · — · —
LOCATOR POINT	*
TAX MAP PARCEL NO.	246
CALCULATED ACREAGE	754(C)
DEED ACREAGE	174
SCALED DIMENSION	327(S)
DEED DIMENSION	185.69
REFERENCE MAPS	
MAP NO.	

SPECIAL DISTRICTS

DIST	DIST
POLICE County Police Town of Oyster Bay - Unincorporated Area	PUBLIC PARKING Town of Oyster Bay - Unincorporated Area
WATER Jericho	SEWER
LIGHTING Town of Oyster Bay	PARK
LIBRARY	IMPROVEMENT
FIRE	SIDEWALK

SPECIAL DISTRICTS

DIST	DIST
FIRE PROTECTION Glenwood - Glen Head	DRAINAGE Unincorporated Area of District #1
SANITARY	FIRE HYDRANT RENTAL
REFUSE & GARBAGE	GARBAGE Glenwood - Glen Head
REFUSE DISPOSAL	ESCALATOR
SEWAGE COLLECTION	WATER POLLUTION CONTROL Town, County, College, Police HQ Town Highway

MUNICIPALITIES

DIST	DIST
TOWN OF: HEMPSTEAD NORTH HEMPSTEAD OYSTER BAY CITY OF: GLEN COVE LONG BEACH VILLAGE OF:	TOWN OF: HEMPSTEAD NORTH HEMPSTEAD OYSTER BAY CITY OF: GLEN COVE LONG BEACH VILLAGE OF:
SCHOOL DISTRICT Glen Head	SCHOOL DISTRICT Glen Head

**SEC. 20
BLK. G**

CODE	SPECIAL	DISTRICT	WITHIN
503	1	10	2
504	1	10	3

Nassau County
Department of Assessment
Charles O'Shea, Chairman
Land & Tax Map
Map Last Revised: January 31 2003
**SEC. 20
BLK. G**
SHEET 3 OF 3

CODE	SPECIAL	DISTRICT	WITHIN	CODE	SPECIAL	DISTRICT	WITHIN	CODE	SPECIAL	DISTRICT	WITHIN
503	1	10	2	503	1	10	2	503	1	10	2
504	1	10	3	504	1	10	3	504	1	10	3