

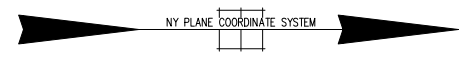
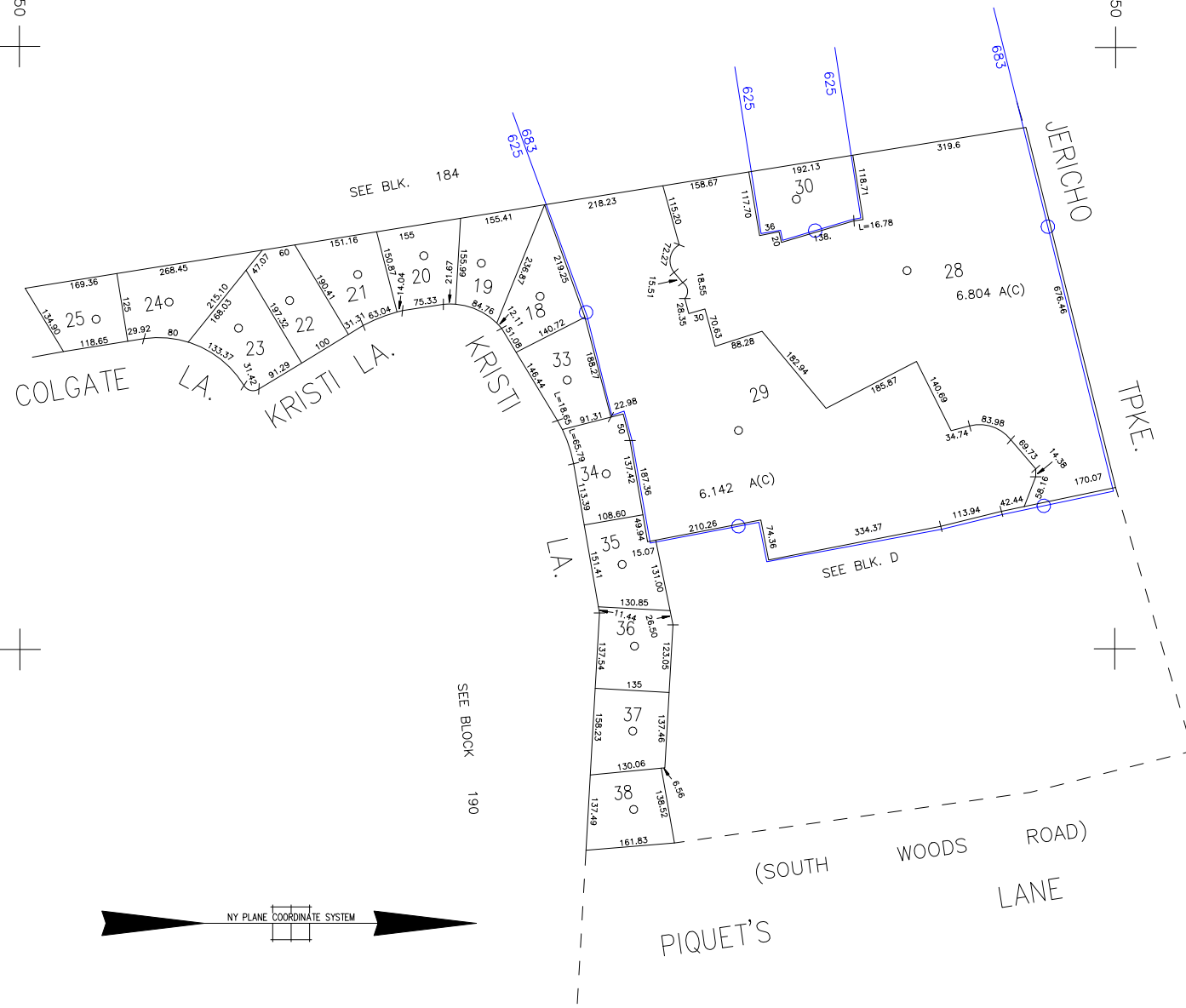


SCALE: 1" = 150'

N 212,750  
E 2,143,250

N 214,750

E 2,144,350



COPYRIGHT 1988 NASSAU COUNTY

LEGEND	
COUNTY LINE	---
TOWN LINE	- - - -
VILLAGE LINE	- · - · -
SCHOOL DISTRICT LINE	- · - · -
PROPERTY LINE	---
SPECIAL DISTRICT LINE	---
BLOCK LIMIT	---
LOCATOR POINT	*
TAX MAP PARCEL NO.	246
CALCULATED ACREAGE	754(C)
DEED ACREAGE	174
SCALED DIMENSION	327(S)
DEED DIMENSION	185.09
REFERENCE MAPS	
MAP NO.	

POLICE	
County Police	3
Jericho	10
Town of Oyster Bay	23
Sycoset	38

FIRE PROTECTION	
Sanitary	
Refuse & Garbage	
Refuse Disposal	
Sewage Collection	
Sewage Collection District #3-P	28
Sycoset	38

SPECIAL DISTRICTS	
Public Parking	
Town of Oyster Bay - Unincorporated Area	A
Sewer	
Nassau County Sewage Disposal District #3	38
Park	
Sycoset	38
Improvement	
Sidewalk	

DRAINAGE	
Unincorporated Area of District #1	D
Fire Hydrant Rental	
Garbage	
Garbage District #1	93
Escalator	
Water Pollution Control	
Town, County, College, Police HQ	1
Town Highway	2

MUNICIPALITIES	
Town of Hempstead	
North Hempstead	
Oyster Bay	
City of Glen Cove	
Long Beach	
Village of Woodbury	13
School District	
Woodbury	13



**Nassau County**  
**Department of Assessment**  
 James E. Davis, Acting Assessor  
**Land & Tax Map**

Map Last Revised: July 12 2016

**SEC. 15**  
**BLK. 198**

SHEET 1 OF 1

CODE	SPECIAL	DISTRICT	WITHIN	CODE	SPECIAL	DISTRICT	WITHIN	CODE	SPECIAL	DISTRICT	WITHIN
625	1	10	2	23	28	3	38	38	38	38	38
685	1	10	2	23	28	3	38	38	38	38	38