



SCALE: 1" = 40'

N 131,500

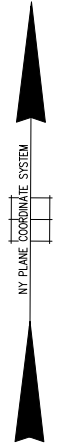
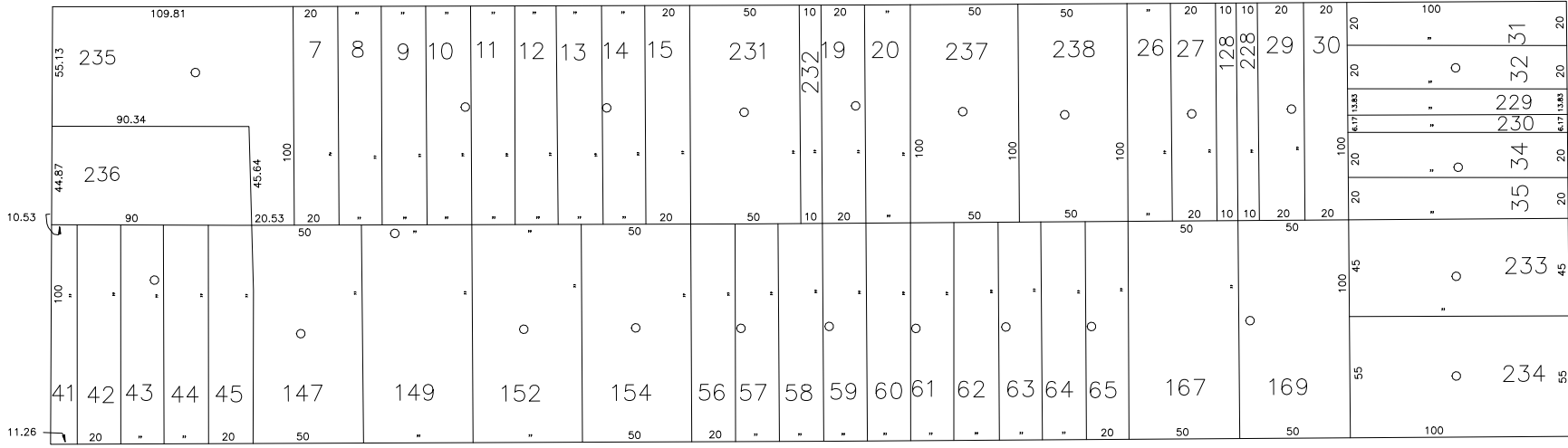
N 131,500

NEW YORK AVE.

GRAND BLVD.

BEECH ST.

PENN ST.



N 131,150

N 131,150

E 2,086,900

E 2,087,500

R.C. CHURCH OF ST. IGNATIUS MARTYR  
LOT NOS : 26,27,128,167 & 169

LEGEND	
COUNTY LINE	---
TOWN LINE	- - - -
VILLAGE LINE	.....
SCHOOL DISTRICT LINE	.....
PROPERTY LINE	-----
SPECIAL DISTRICT LINE	-----
BLOCK LIMIT	-----
LOCATOR POINT	*
TAX MAP PARCEL NO.	246
CALCULATED ACREAGE	794(C)
DEED ACREAGE	178
SCALED DIMENSION	327(S)
DEED DIMENSION	185.89
REFERENCE MAPS	
MAP NO.	

POLICE		DIST	
WATER			
LIGHTING			
LIBRARY			
FIRE			

FIRE PROTECTION		DIST	
SANITARY			
REFUSE & GARBAGE			
REFUSE DISPOSAL			
SEWAGE COLLECTION			

SPECIAL DISTRICTS		
PUBLIC PARKING		
SEWER		
PARK		
IMPROVEMENT		
SIDEWALK		

DRAINAGE		DIST	
FIRE HYDRANT RENTAL			
GARBAGE			
ESCALATOR			
WATER POLLUTION CONTROL			
Town, County, College, Police HQ-LB	1		

MUNICIPALITIES	
TOWN OF:	
HEMPSTEAD	
NORTH HEMPSTEAD	
OYSTER BAY	
CITY OF:	
GLEN COVE	
LONG BEACH	
VILLAGE OF:	
SCHOOL DISTRICT	
Long Beach	28



**Nassau County**  
Department of Assessment  
James E. Davis, Acting Assessor  
**Land & Tax Map**

Map Last Revised: January 17 2017

**SEC. 59**  
**BLK. 6**

SHEET 1 OF 1

CODE	SPECIAL	DISTRICT	WITHIN	CODE	SPECIAL	DISTRICT	WITHIN	CODE	SPECIAL	DISTRICT	WITHIN
999	1										

COPYRIGHT 1982 NASSAU COUNTY