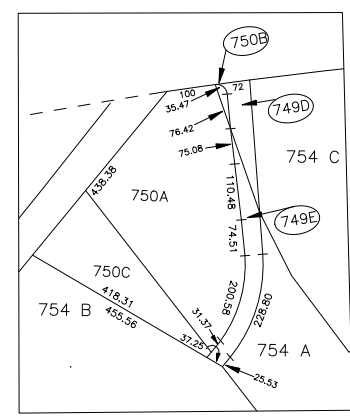
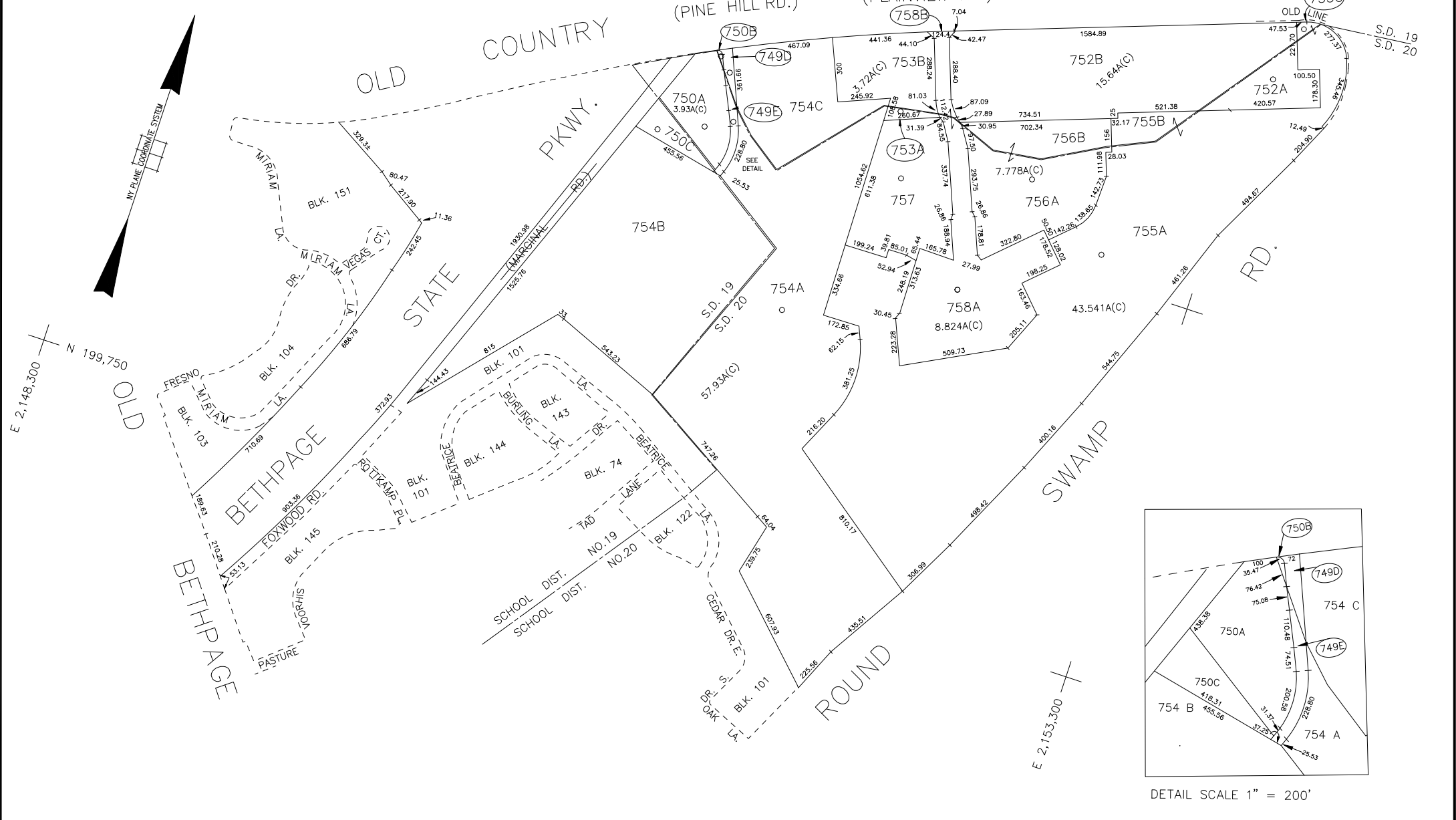


N 201,550

E 2,148,300
N 199,750



DETAIL SCALE 1" = 200'

LEGEND

COUNTY LINE	---
TOWN LINE	---
VILLAGE LINE	---
SCHOOL DISTRICT LINE	---
PROPERTY LINE	---
SPECIAL DISTRICT LINE	---
BLOCK LIMIT	---
LOCATOR POINT	*
TAX MAP PARCEL NO.	246
CALCULATED ACREAGE	754(C)
DEED ACREAGE	178
SCALED DIMENSION	327(S)
DEED DIMENSION	185.69
REFERENCE MAPS	
MAP NO.	

POLICE

County Police	DIST 3
Plainview	
LIGHTING	
Town of Oyster Bay	DIST 23
LIBRARY	
FIRE	

SPECIAL DISTRICTS

FIRE PROTECTION	DIST 43
Plainview	
SANITARY	
Plainview	
REFUSE & GARBAGE	
Plainview	
REFUSE DISPOSAL	
Plainview	
SEWAGE COLLECTION	
Sewage Collection District #3-P	DIST 28
Town of Oyster Bay	DIST 65

SPECIAL DISTRICTS

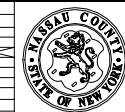
PUBLIC PARKING	DIST A
Town of Oyster Bay - Unincorporated Area	
SEWER	
Nassau County Sewage Disposal District #3	DIST 39
PARK	
Plainview - Old Bethpage	DIST 81
IMPROVEMENT	
Plainview	
SIDEWALK	

DRAINAGE

Unincorporated Area of District #1	DIST D
FIRE HYDRANT RENTAL	
GARBAGE	
Garbage District #1	DIST 93
ESCALATOR	
WATER POLLUTION CONTROL	
Town, County, College, Police HQ	DIST 1
Town Highway	DIST 2

MUNICIPALITIES

TOWN OF:	
HEMPSTEAD	
NORTH HEMPSTEAD	
OYSTER BAY	
CITY OF:	
GLEN COVE	
LONG BEACH	
VILLAGE OF:	
SCHOOL DISTRICT	
Plainview/Plainview-Old Bethpage CSD	DIST 19
Old Bethpage/Plainview-Old Bethpage CSD	DIST 20



Nassau County
Department of Assessment
 James E. Davis, Acting Assessor
Land & Tax Map

Map Last Revised: January 24 2017

SEC. 47
BLK. E

SHEET 1 OF 1

CODE	SPECIAL	DISTRICT	WITHIN	CODE	SPECIAL	DISTRICT	WITHIN	CODE	SPECIAL	DISTRICT	WITHIN
879	1	15	2	23	28	3	39	43	65	81	93