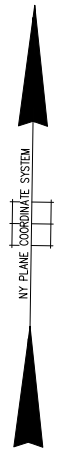


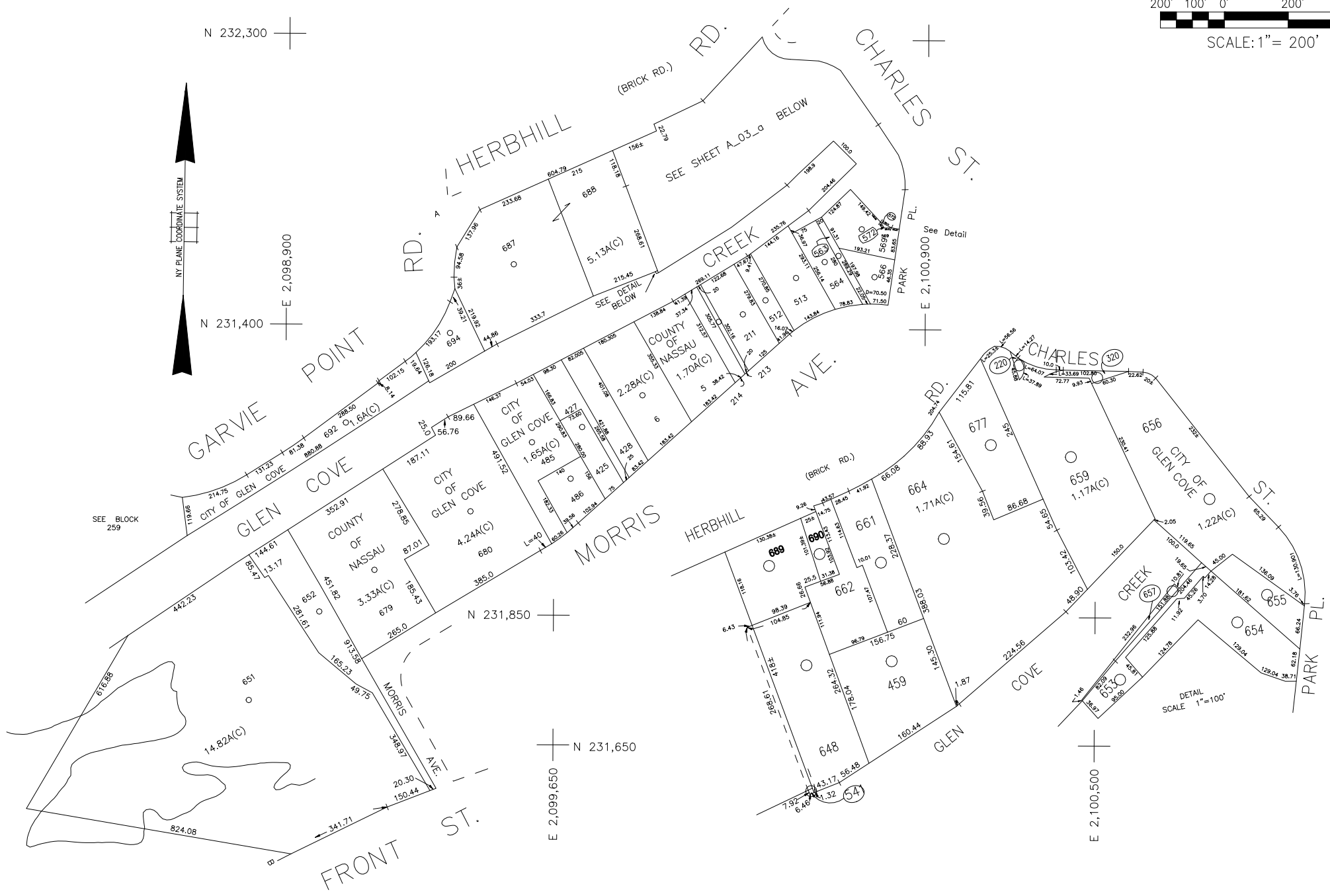
N 232,300



N 231,400

E 2,098,900

COPYRIGHT 1988 NASSAU COUNTY



SEE BLOCK 259

SEE DETAIL

DETAIL SCALE 1"=100'

LEGEND	
COUNTY LINE	---
TOWN LINE	---
VILLAGE LINE	---
SCHOOL DISTRICT LINE	---
PROPERTY LINE	---
SPECIAL DISTRICT LINE	---
BLOCK LIMIT	---
LOCATOR POINT	*
TAX MAP PARCEL NO.	246
CALCULATED ACREAGE	754(C)
DEED ACREAGE	174
SCALED DIMENSION	327(5)
DEED DIMENSION	185.09
REFERENCE MAPS	
MAP NO.	

POLICE		FIRE PROTECTION	
DIST	WITHIN	DIST	WITHIN

WATER		SANITARY	
DIST	WITHIN	DIST	WITHIN

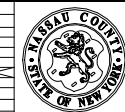
REFUSE & GARBAGE		REFUSE DISPOSAL	
DIST	WITHIN	DIST	WITHIN

SEWAGE COLLECTION		PUBLIC PARKING	
DIST	WITHIN	DIST	WITHIN

SEWER		PARK	
DIST	WITHIN	DIST	WITHIN

IMPROVEMENT		MUNICIPALITIES	
DIST	WITHIN	DIST	WITHIN

CODE	SPECIAL	DISTRICT	WITHIN	CODE	SPECIAL	DISTRICT	WITHIN	CODE	SPECIAL	DISTRICT	WITHIN
991	1										



Nassau County
Department of Assessment
James E. Davis, Acting Assessor
Land & Tax Map

Map Last Revised: June 9 2017

SEC. 21
BLK. A

SHEET 3 OF 4